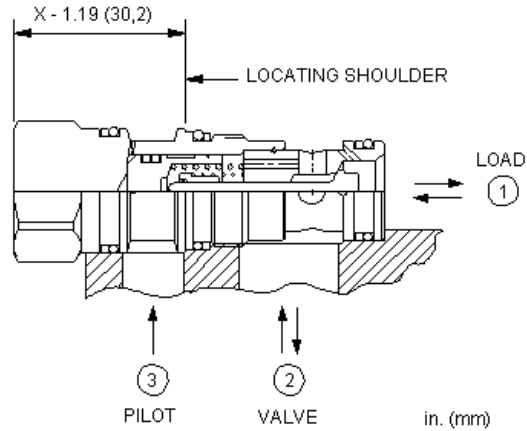
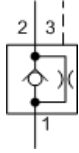


MODEL
CNCE

Pilot-to-open check valve with bypass orifice
CAPACITY: 60 L/min. | CAVITY: T-11A



CONFIGURATION

X	Control	Not Adjustable
C	Setting Range	30 psi (2 bar) Cracking Pressure, .016 - .153 in. (0,4 - 3,9 mm)
N	Seal Material	Buna-N

This valve is a pilot to open check valve with a bypass orifice. It incorporates a sealed pilot, a steel seat, and is non-vented. It allows free flow from the valve (port 2) to the load (port 1) and restricts flow in the opposite direction. Pressure at the pilot (port 3) will open the valve from port 1 to port 2. The pilot pressure needed at port 3 to open the valve is directly proportional to the load pressure at port 1. Pressure at port 2 directly opposes the pilot pressure. Note: The bypass orifice diameter is specified by the customer. See Technical Data below for the allowable orifice range.

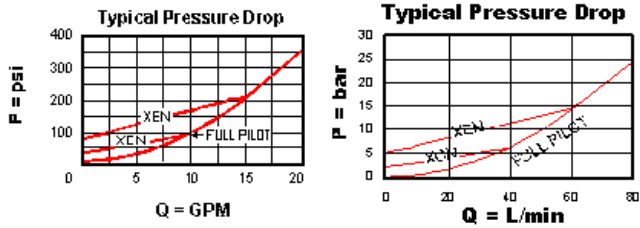
TECHNICAL DATA

Cavity	T-11A
Series	1
Capacity	60 L/min.
Pilot Ratio	3:1
Maximum Operating Pressure	350 bar
Orifice Range	0,4 - 3,9 mm
Valve Hex Size	22,2 mm
Valve Installation Torque	41 - 47 Nm
Seal kit - Cartridge	Buna: 990-011-007
Seal kit - Cartridge	Polyurethane: 990-011-002
Seal kit - Cartridge	Viton: 990-011-006
Model Weight	0.13 kg.

TECHNICAL FEATURES

- Sealed pilot for use in circuits where cross port leakage is undesirable.
- The customer specified orifice diameter is stamped on one of the cartridge's hex faces.
- For models with manual load release control option, turn load release clockwise to release load.
- This 3 port pilot-to-open check valve and 3 port counterbalance valves are physically interchangeable (i.e. same cavities, same flow path for a given frame size). However, cartridge extension dimensions from the mounting surface may vary.
- Incorporates the Sun floating style construction to minimize the possibility of internal parts binding due to excessive installation torque and/or cavity/cartridge machining variations.

PERFORMANCE CURVES



Note: Performance data shown reflects a blocked orifice.

CONFIGURATION OPTIONS

CONTROL

Standard Options	X	Not Adjustable
------------------	---	----------------

SETTING RANGE

Standard Options	A	4 psi (0,3 bar) Cracking Pressure, .016 - .153 in. (0,4 - 3,9 mm)
	B	15 psi (1 bar) Cracking Pressure, .016 - .153 in. (0,4 - 3,9 mm)
	C	30 psi (2 bar) Cracking Pressure, .016 - .153 in. (0,4 - 3,9 mm)
	D	50 psi (3,5 bar) Cracking Pressure, .016 - .153 in. (0,4 - 3,9 mm)
	E	75 psi (5 bar) Cracking Pressure, .016 - .153 in. (0,4 - 3,9 mm)
	F	100 psi (7 bar) Cracking Pressure, .016 - .153 in. (0,4 - 3,9 mm)

SEAL MATERIAL

Standard Options	N	Buna-N
	V	Viton

Copyright © 2002-2014 Sun Hydraulics Corporation. All rights reserved.