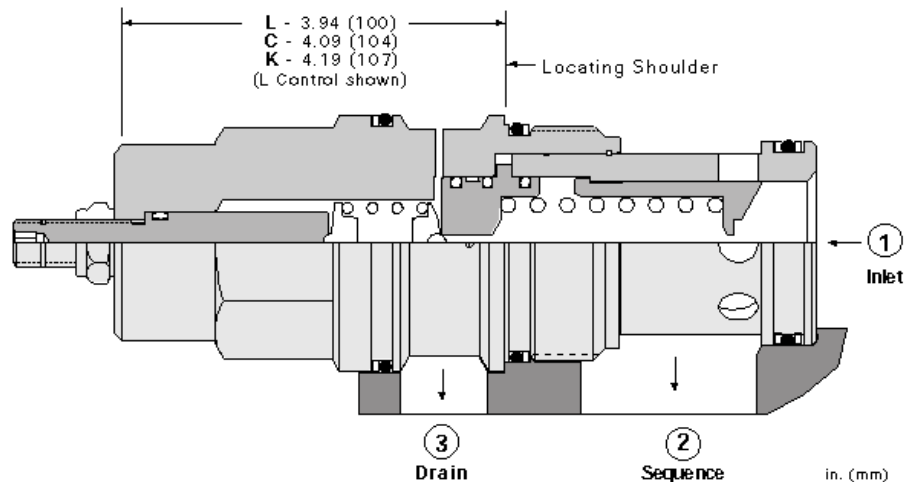
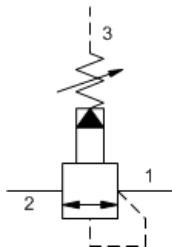


MODEL
RSJC

Pilot operated, balanced piston sequence valve
CAPACITY: 480 L/min. | CAVITY: T-19A



CONFIGURATION

L	Control	Standard Screw Adjustment
A	Adjustment Range	100 - 3000 psi (7 - 210 bar), 1000 psi (70 bar) Standard Setting
N	Seal Material	Buna-N
(none)	Material/Coating	Standard Material/Coating

Pilot-operated, balanced piston sequence valves will supply a secondary circuit with flow once the pressure at the inlet (port 1) has exceeded the valve setting. The pressure setting of a sequence valve controls the pressure at port 1 relative to the pressure at the drain (port 3). These valves are insensitive to back pressure at port 2 (sequence), up to the valve setting. They may be used to regulate pressure in place of 2-port relief valves if there is pressure in the return line.

TECHNICAL DATA

Cavity	T-19A
Series	4
Capacity	480 L/min.
Factory Pressure Settings Established at	15 L/min.
Maximum Operating Pressure	350 bar
Control Pilot Flow	0,25 - 0,33 L/min.
Response Time - Typical	10 ms
Maximum Valve Leakage at 110 SUS (24 cSt)	80 cc/min.@70 bar
Adjustment - Number of Clockwise Turns to Increase Setting	5
Valve Hex Size	41,3 mm
Valve Installation Torque	475 - 508 Nm
Adjustment Screw Internal Hex Size	4 mm
Locknut Hex Size	15 mm
Locknut Torque	9 - 10 Nm
Seal kit - Cartridge	Buna: 990-019-007
Seal kit - Cartridge	Polyurethane: 990-019-002
Seal kit - Cartridge	Viton: 990-019-006
Model Weight	1.44 kg.

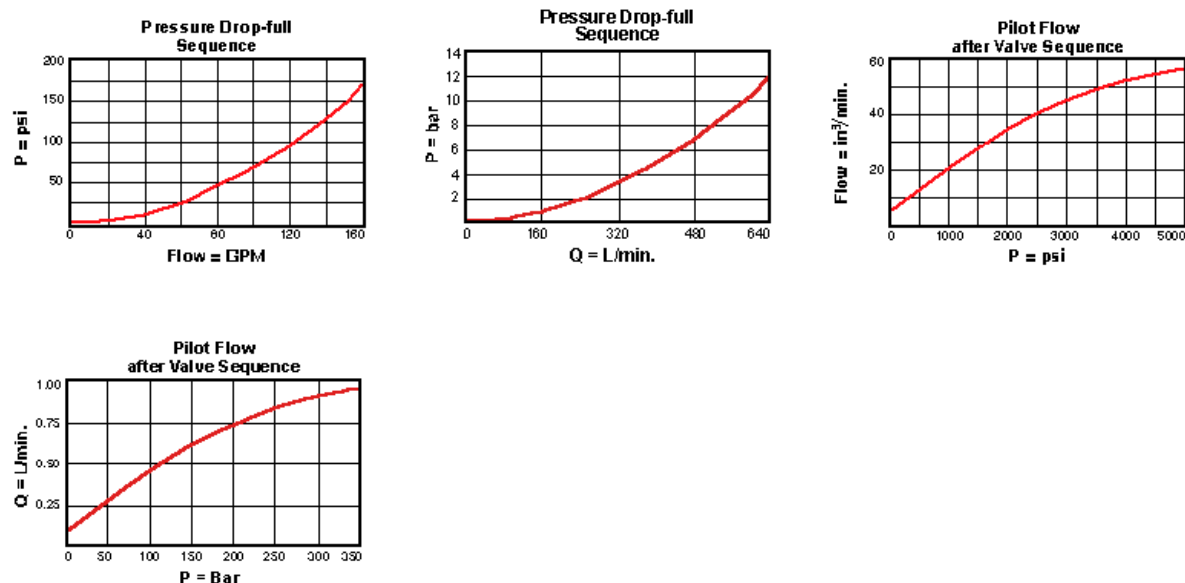
SYMBOLS



TECHNICAL FEATURES

- All 3 port sequence cartridges are physically and functionally interchangeable (i.e. same flow path, same cavity for a given frame size).
- Pilot flow continues to increase as the pressure at port 1 (inlet), relative to the pressure at port 3 (drain), rises above the valve setting.
- The main stage orifice is protected by a 150 micron stainless steel screen.
- Pressure at port 3 is directly additive to the valve setting at a 1:1 ratio and should not exceed 5000 psi (350 bar).
- Not suitable for use in load holding applications due to spool leakage.
- W and Y controls (where applicable) can be specified with or without a special setting. When no special setting is specified, the valve is adjustable throughout its full range using the W or Y control. When a special setting is specified, this setting represents the maximum setting of the valve.
- Incorporates the Sun floating style construction to minimize the possibility of internal parts binding due to excessive installation torque and/or cavity/cartridge machining variations.

PERFORMANCE CURVES



CONFIGURATION OPTIONS

CONTROL		
Preferred Options	L	Standard Screw Adjustment
	C	Tamper Resistant - Factory Set
Standard Options	K	Handknob
	Y	Tri-Grip Handknob
ADJUSTMENT RANGE		
Preferred Options	A	100 - 3000 psi (7 - 210 bar), 1000 psi (70 bar) Standard Setting
	W	150 - 4500 psi (10,5 - 315 bar), 1000 psi (70 bar) Standard Setting
Standard Options	B	50 - 1500 psi (3,5 - 105 bar), 1000 psi (70 bar) Standard Setting
	C	150 - 6000 psi (10,5 - 420 bar), 1000 psi (70 bar) Standard Setting

E 25 - 400 psi (1,7 - 28 bar), 200 psi (14 bar) Standard Setting

SEAL MATERIAL

Preferred Options **N** Buna-N

Standard Options **V** Viton

MATERIAL/COATING

Standard Options Standard Material/Coating
/LH Mild Steel, Zinc-Nickel

RELATED MODELS

RSJC8

Pilot operated, balanced piston sequence main stage with integral T-8A control cavity

Copyright © 2002-2014 Sun Hydraulics Corporation. All rights reserved.