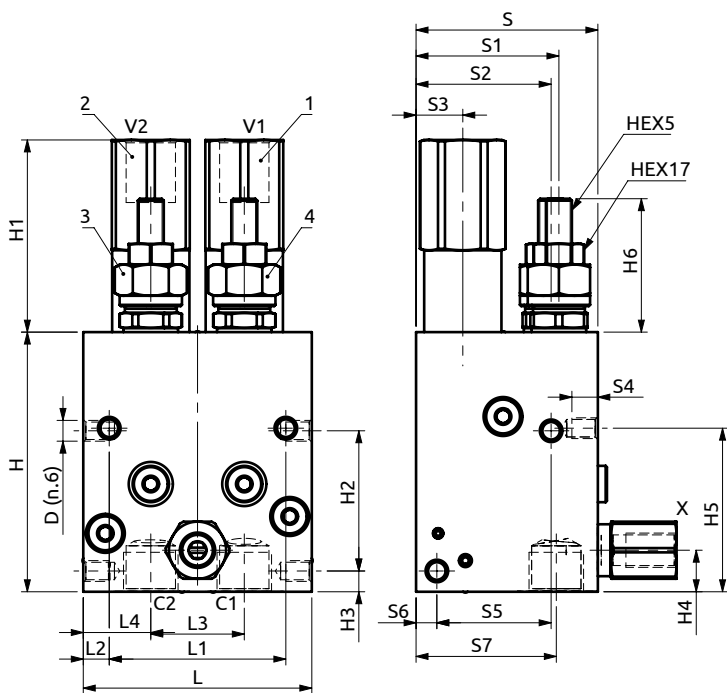
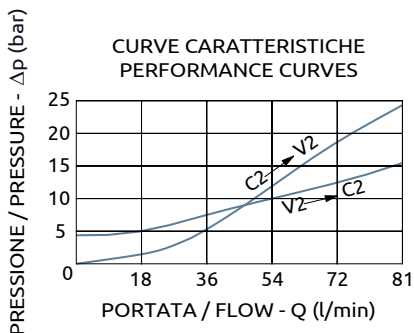
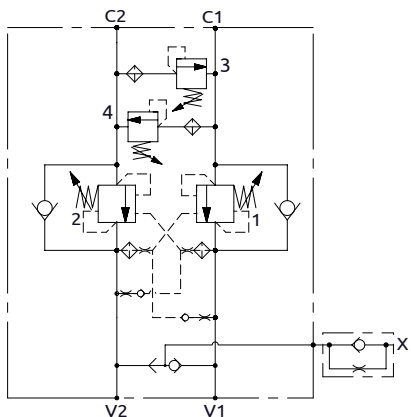


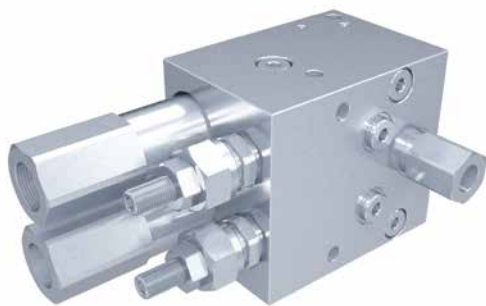


Valvola controllo rotazione
Rotation control valve



Corpo in acciaio / Steel body

| | | | | | | | | | | | | | | | | | | | | | |
|---------------|----|----|----|----|----|----|----|----|----|----|----|----|----|-----|----|----|----|----|----|-------|----|
| A080402.12.00 | 88 | 68 | 10 | 36 | 26 | 70 | 55 | 52 | 18 | 10 | 44 | 8 | 54 | 100 | 74 | 54 | 8 | 16 | 63 | ~51.4 | M8 |
| COD. | L | L1 | L2 | L3 | L4 | S | S1 | S2 | S3 | S4 | S5 | S6 | S7 | H | H1 | H2 | H3 | H4 | H5 | H6 | D |



DESCRIZIONE

La valvola assicura il controllo dinamico della rotazione con controllo del blocco quando il distributore è in posizione neutra. Inoltre ha la funzione di limitazione della pressione massima in spunto o in caso di urti. Tramite la selettoria interna la pressione sul ramo V1 e V2 viene inviata al freno per la sua apertura, la quale deve avvenire in anticipo rispetto al pilotaggio della valvola.

DESCRIPTION

The valve ensures the rotation dynamic control by controlling the blocking when the directional valve is in neutral position. It has also the maximum pressure limiting function when any take-off or any shock occurs. Thanks to the internal selecting valve, line V1 and V2 pressure is supplied to the brake for its opening, that has to occur in advance than the piloting of the valve.

| Codice Ordinazione | Rapporto di Pilotaggio | Campo di Taratura | Taratura Standard | Portata Massima | Pressione Max | Dimensione Porte | Peso | | |
|--------------------|------------------------|-------------------|-------------------|-----------------|---------------|------------------|----------------|--------|--------|
| Ordering Code | Pilot Ratio | Pressure Range | Standard Setting | Max Flow | Max Pressure | Port Size | Weight | | |
| A080402.12.00 | 4.3:1 | 1-2 | 60-250 bar | 130 bar | 80 l/min | 500 bar | V1, V2, C1, C2 | 1/2" G | 4.7 kg |
| | | 3-4 | 40-150 bar | 100 bar | | | X | 1/4" G | |