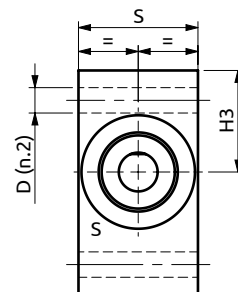
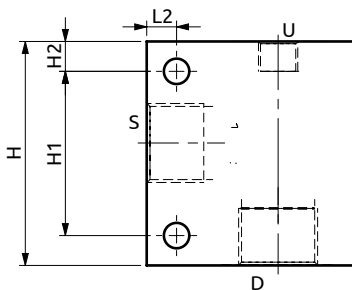
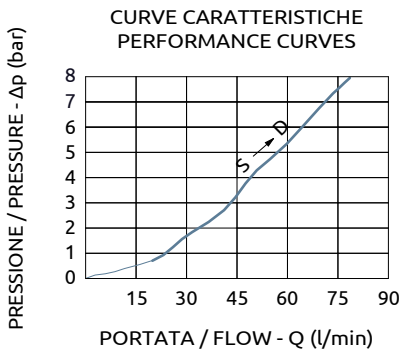
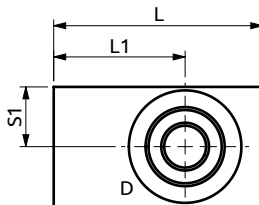
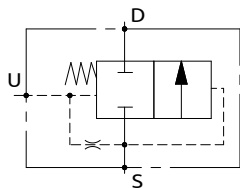




Valvola di messa a scarico per sistema d'emergenza  
Unloading valve for emergency system

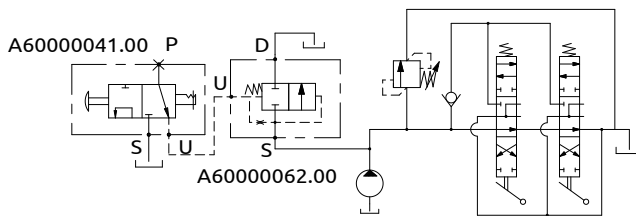


Corpo in acciaio / Steel body

70	44	10	40	20	75	55	10	34	Ø8.5
L	L1	L2	S	S1	H	H1	H2	H3	D



SCHEMA IDRAULICO CON VALVOLA DOPPIA  
HYDRAULIC DIAGRAM WITH TWO VALVES



DESCRIZIONE	DESCRIPTION
Valvola di messa a scarico normalmente chiusa con otturatore a cono pilotato.	Pilot operated normally closed poppet type unloading valve.

Ordine	Portata Massima	Pressione di Lavoro	Dimensione Porte	Peso
Ordering Code	Max Flow	Working Pressure	Port Size	Weight
A600000.62.00	80 l/min	350 bar	S, D U	1.3 kg