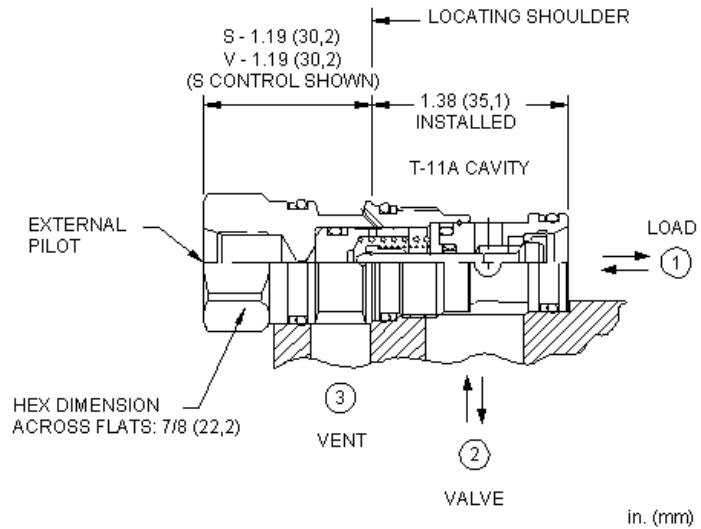
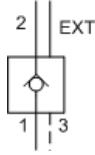


MODEL
CKCF

Vented pilot-to-open check valve with external pilot port, sealed pilot, and stem seal
CAPACITY: 60 L/min. | CAVITY: T-11A



CONFIGURATION

S	Control	External 4-SAE Pilot Port, Vent to Port 3
C	Cracking Pressure	30 psi (2 bar)
N	Seal Material	Buna-N

This valve is a pilot to open check valve. It has a sealed pilot, a steel seat, and is vented. It allows free flow from the valve (port 2) to the load (port 1) and blocks flow in the opposite direction. Pressure at the external pilot port will open the valve from port 1 to port 2. Pilot pressure needed to open the valve is directly proportional to the load pressure at port 1. The valve is insensitive to pressure at port 2 because the spring chamber references the vent (port 3).

TECHNICAL DATA

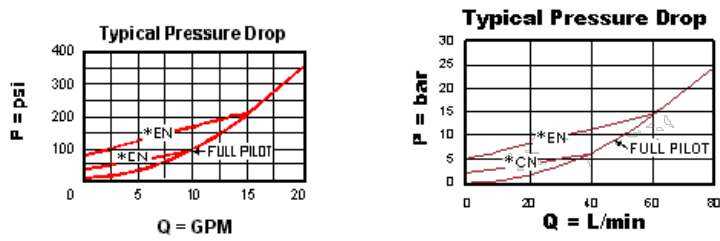
Cavity	T-11A
Series	1
Capacity	60 L/min.
Pilot Ratio	3:1
Maximum Operating Pressure	350 bar
Maximum Valve Leakage at 110 SUS (24 cSt)	0,07 cc/min.
Valve Hex Size	22,2 mm
Valve Installation Torque	41 - 47 Nm
Seal kit - Cartridge	Buna: 990-011-007
Seal kit - Cartridge	Polyurethane: 990-011-002
Seal kit - Cartridge	Viton: 990-011-006
Model Weight	0.12 kg.

TECHNICAL FEATURES

- There is a positive seal between ports 2 and 3.
- These valves should be considered service items only. New applications should use valves from the CV*V family.
- This valve has a proportional pressure reducing characteristic that limits the pressure developed at port 1 to about 75% of the pressure at port 2.
- Pilot pressure as low as 15 psi (1 bar) higher than the pressure at the vent can prevent the valve from closing.
- Provides hose break protection, prevents loads from drifting and positively locks pressurized loads.
- Sealed pilot for use in circuits where cross port leakage is undesirable.
- Pilot-to-open check cartridges are locking valves, not motion control valves. For motion control applications, use counterbalance valves.
- Extremely low leakage. If the load drifts due to the valve, the seat has probably been damaged by contamination and the valve should be replaced.
- This 3 port pilot-to-open check valve is not physically interchangeable with other 3 port pilot-to-open check valves or counterbalance valves due to the different pilot/vent configuration.

- Incorporates the Sun floating style construction to minimize the possibility of internal parts binding due to excessive installation torque and/or cavity/cartridge machining variations.

PERFORMANCE CURVES



CONFIGURATION OPTIONS

CONTROL

Standard Options	S	External 4-SAE Pilot Port, Vent to Port 3
	V	External 1/4 NPTF Pilot Port, Vent to Port 3

CRACKING PRESSURE

Standard Options	B	15 psi (1 bar)
	C	30 psi (2 bar)
	D	50 psi (3,5 bar)
	E	75 psi (5 bar)
	F	100 psi (7 bar)

SEAL MATERIAL

Standard Options	N	Buna-N
	V	Viton

Copyright © 2002-2014 Sun Hydraulics Corporation. All rights reserved.