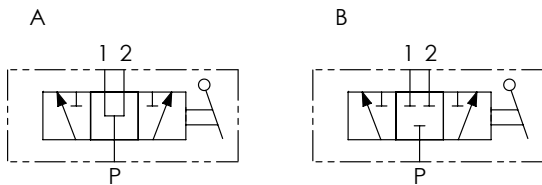


Schema idraulico - Hydraulic circuit

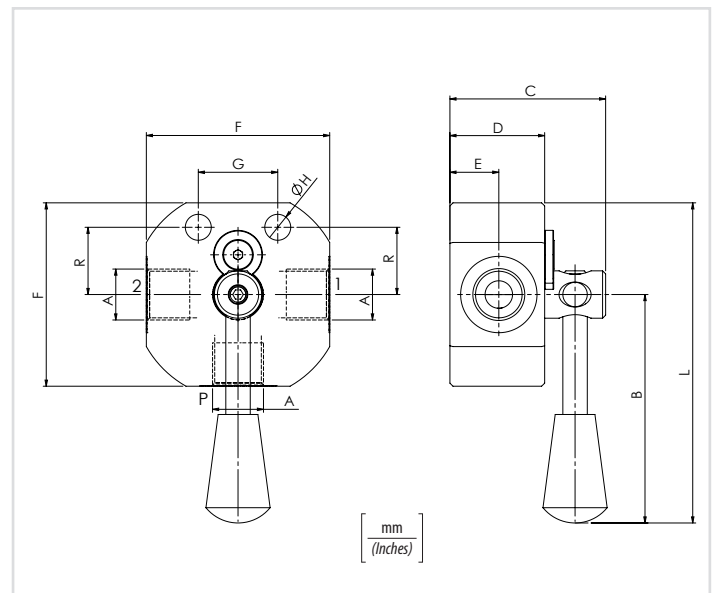


Codice ordinazione Ordering code	01	02	03	04
	DDFA3			S

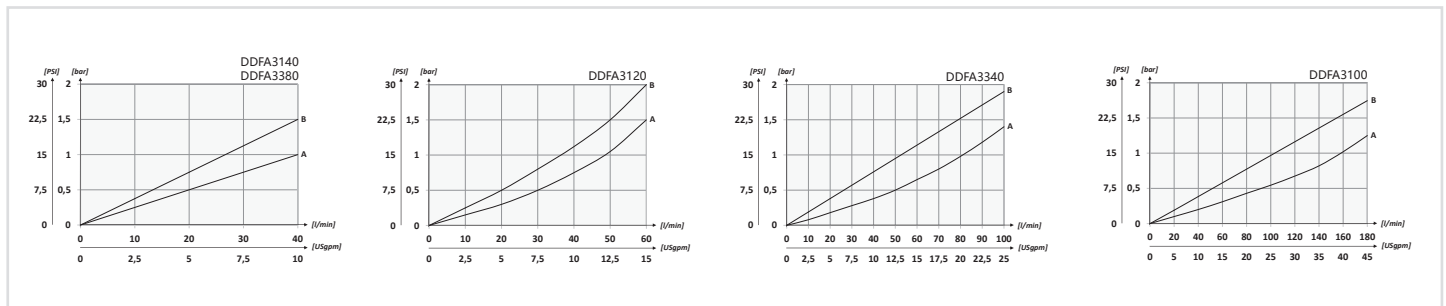
01	Deviatori di flusso a 3 vie alta pressione (High pressure 3 ways flow diverters)		DDFA3
02	Dimensione (Size)	BSPP 1/4	140
		BSPP 3/8	380
		BSPP 1/2	120
		BSPP 3/4	340
		BSPP 1	100
03	Schema (Circuit)	Centro aperto (Open centre)	A
		Centro chiuso (Closed centre)	B
04	Materiale (Material)	Acciaio (Steel)	S

Dati tecnici - Technical data

Olio idraulico/Mineral oil	ISO 6743/4 (DIN 51524)	
Viscosità olio/Oil viscosity	15-250 mm ² /s (15 to 250 cSt)	
Classe di contaminazione max con filtro Max contamination index with filter	ISO 4406:1999 Classe 19/17/14	
Temperatura dell'olio/Oil temperature	-20°C +80°C	-4°F + 176°F
Temperatura ambiente/Ambient temperature	-20°C +50°C	-4°F + 122°F
Trafilamento massimo Max internal leakag	7 gocce al min. 7 drops-min	200 bar 2900 PSI
È indispensabile l'utilizzo di un filtro per proteggere la valvola (filtrazione consigliata 15 µm) It is necessary a filter use to protect the valve (advised filtration 15 µm)		



Performances



Caratteristiche tecniche - Technical characteristics

Tipo Type	A	Portata max Max flow l/min-USgpm	Pressione max Max pressure bar/PSI	B	C	D	E	F	G	H	L	R	Peso approssimativo Approx weight kg/lb									
DDFA3140	BSPP 1/4	40 (10.6)	500 (7250)	80 (3.15)	50 (1.97)	30 (1.18)	15 (0.59)	60 (2.36)	26 (1.02)	8,5 (0.33)	110 (4.33)	22 (0.87)	0,75 (1.65)									
DDFA3380	BSPP 3/8												0,70 (1.54)									
DDFA3120	BSPP 1/2	0,69 (1.52)																				
DDFA3340	BSPP 3/4	100 (26.4)											102 (4.02)	67 (2.64)	45 (1.77)	22,5 (0.89)	80 (3.15)	32 (1.26)	11 (0.43)	142 (5.59)	26 (1.02)	1,8 (4)
DDFA3100	BSPP 1	180 (47.5)											102 (4.02)	67 (2.64)	45 (1.77)	22,5 (0.89)	85 (3.35)	32 (1.26)	11 (0.43)	145 (5.71)	31,5 (1.24)	1,8 (4)