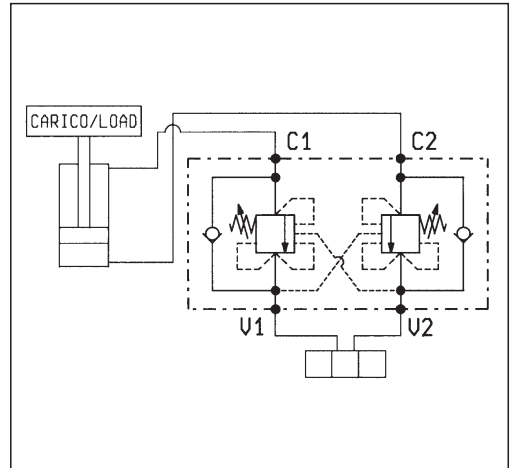
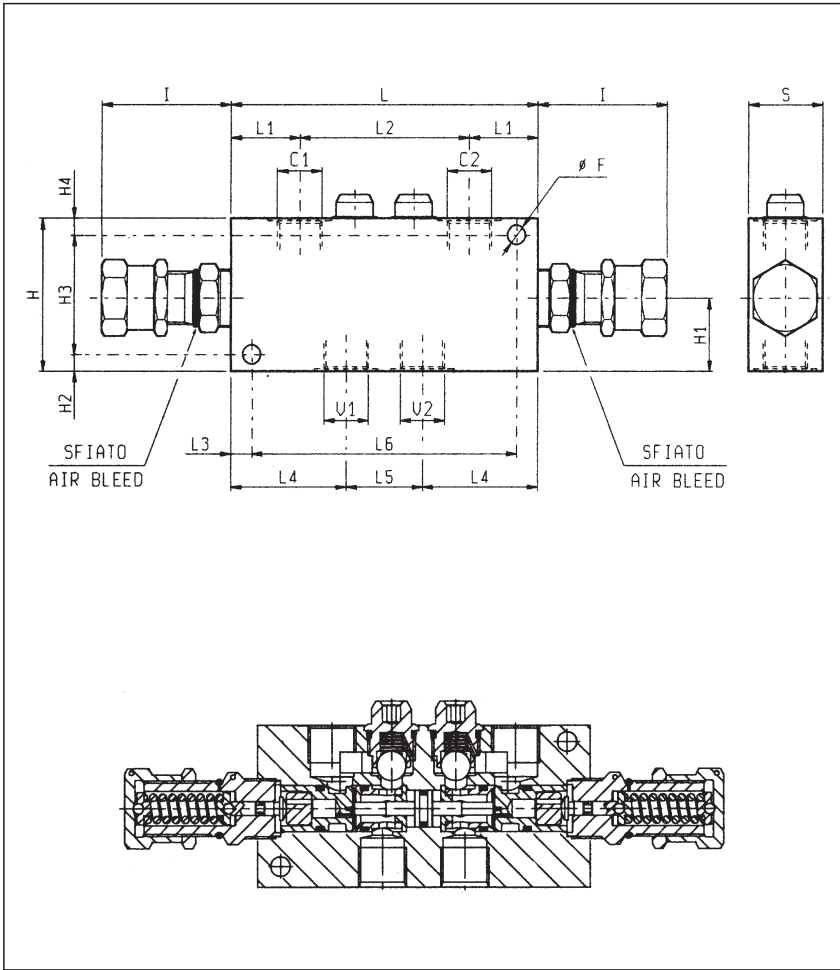




**BILANCIAMENTO, DOPPIO EFFETTO, VERSIONE "CC"**  
**DUAL PILOT ASSISTED, "CC" TYPE OVERCENTRE**

**VBSO-DE-CC**

**05.42.05- X - Y - Z**



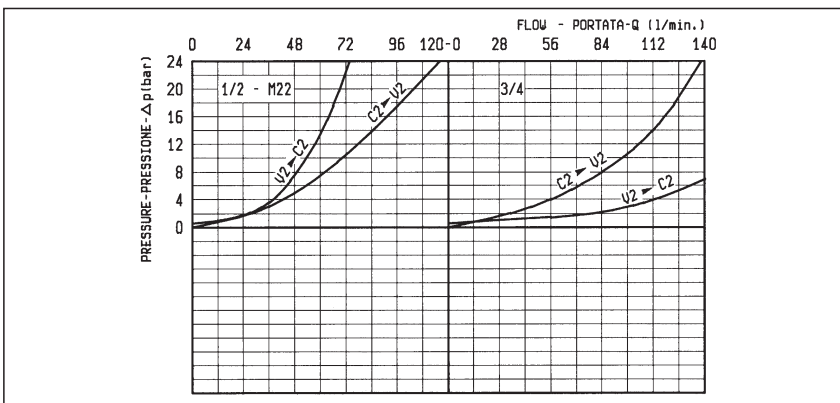
**DATI TECNICI / TECHNICAL DATA**

Pressione max. 350 bar  
 Max. pressure

Portata max. vedi diagramma  
 Flow see performance graph

Taratura della valvola: almeno 1.3 volte superiore alla pressione indotta dal carico  
 Pressure setting: at least 1.3 times the load induced pressure

40	155	50	62.5	10	107	34	175	65	10	70	10	38	90	10.5	3/4	2.15
35	125	36	54.5	10	86	29.5	145	65	8	54	8	33	70	8.5	M22	1.45
35	125	36	54.5	10	80	32.5	145	65	8	54	8	33	70	8.5	1/2	1.45
<b>S</b>	<b>L6</b>	<b>L5</b>	<b>L4</b>	<b>L3</b>	<b>L2</b>	<b>L1</b>	<b>L</b>	<b>I</b>	<b>H4</b>	<b>H3</b>	<b>H2</b>	<b>H1</b>	<b>H</b>	<b>F</b>	<b>Y</b>	Peso kg Weight kg



<b>X</b>	<b>RAPPORTO DI PILOTAGGIO PILOT RATIO</b>
<b>02</b>	8.2 : 1
<b>10</b>	3.2 : 1

<b>Z</b>	<b>MOLLE / SPRINGS</b>				
	Campo taratura min - max bar Adj. press. range bar	Incremento press. bar / giro vite Press. increase bar / turn	Taratura standard bar (Q = 5 l/min) Std. setting bar (made at = 5 l/min)	Cod. ordinazione Ordering code	Colore Colour
<b>20</b>	60-210	54	200	03.51.01.075	verde green
<b>35</b>	100-350	95	350	03.51.01.059	giallo yellow

<b>Y</b>	<b>ATTACCHI / PORT SIZE</b>	
	V1-V2-C1-C2	
<b>03</b>	G 1/2	
<b>04</b>	G 3/4	
<b>89</b>	M22x1.5	