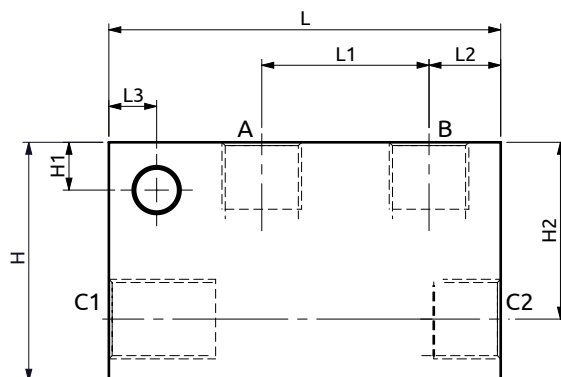
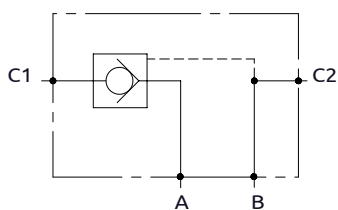


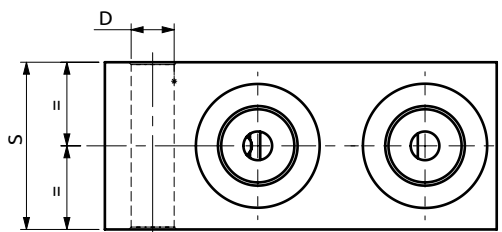
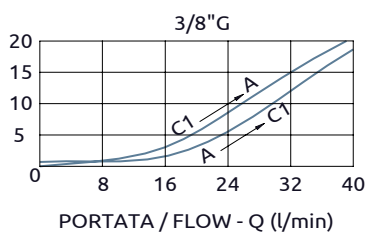


## Valvola di blocco semplice effetto pilotata Single pilot operated check valve



PRESSIONE / PRESSURE -  $\Delta p$  (bar)

CURVE CARATTERISTICHE  
PERFORMANCE CURVES



Corpo in alluminio / Aluminium body

<b>B050302.10.00</b>	82	35	15	10	35	50	10	37	Ø9
<b>COD.</b>	L	L1	L2	L3	S	H	H1	H2	D



DESCRIZIONE	DESCRIPTION
Permette il flusso libero da A verso C1. Idonea al sostentamento di un carico, non al controllo discesa.	The valve allows free flow from A to C1. Suitable to hold a load not to control a load lowering.

Codice Ordinazione	Rapporto di Pilotaggio	Portata Massima	Pressione Max	Dimensione Porte	Peso
Ordering Code	Pilot Ratio	Max Flow	Max Pressure	Port Size	Weight
B050302.10.00	4.7:1	40 l/min	400 bar	3/8"G	0.38 kg