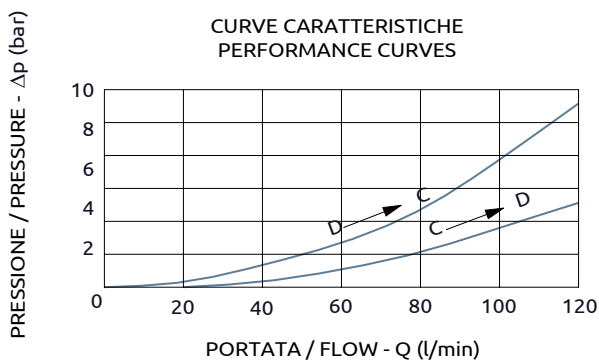
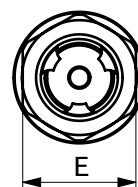
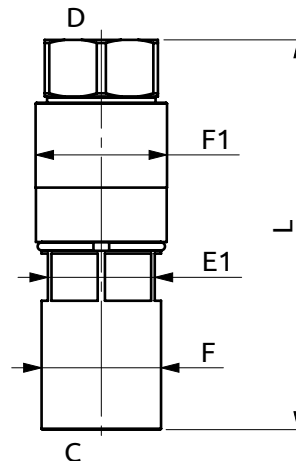
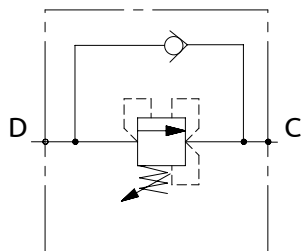




Valvola di sequenza compensata

Pressure compensated sequence valve



Corpo in acciaio/Steel body

| | | | | | |
|---------------|-----|-----|-----|-------|-------|
| A040601.14.00 | 124 | Ø38 | Ø42 | HEX36 | HEX34 |
| A040601.15.00 | 124 | Ø38 | Ø42 | HEX36 | HEX34 |
| A040601.18.00 | 124 | Ø38 | Ø42 | HEX36 | HEX34 |
| COD. | L | F | F1 | E | E1 |



| DESCRIZIONE | DESCRIPTION |
|--|---|
| Valvola di sequenza con taratura regolabile. | Sequence valve with adjustable setting. |

| Codice Ordinazione | Campo di Taratura | Taratura Standard | Incremento per Giro | Portata Massima | Pressione Max | Dimensione Porte | | Peso |
|--------------------|-------------------|-------------------|---------------------|-----------------|---------------|------------------|-------|--------|
| Ordering Code | Pressure Range | Standard Setting | Pressure Increase | Max Flow | Max Pressure | Port Size | | Weight |
| A040601.14.00 | 50-120 bar | 90 bar | ~30 bar/turn | 120 l/min | 500 bar | D, C | 3/4"G | 0.8 kg |
| A040601.15.00 | 150-280 bar | 150 bar | ~46 bar/turn | 120 l/min | 500 bar | D, C | 3/4"G | 0.8 kg |
| A040601.18.00 | 100-160 bar | 150 bar | ~30 bar/turn | 120 l/min | 500 bar | D, C | 3/4"G | 0.8 kg |