

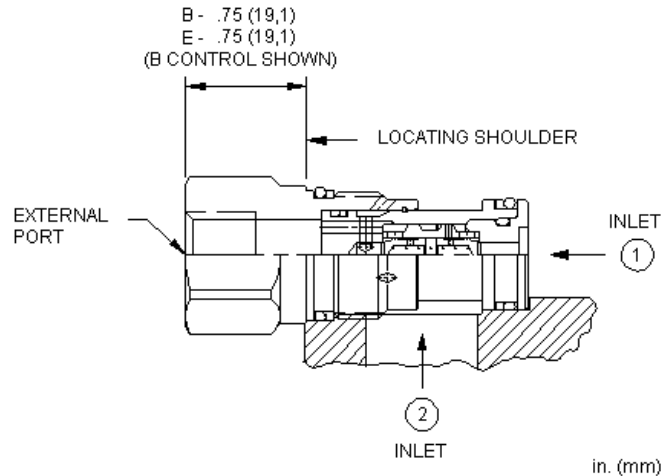
MODEL
CDA

Back-to-back check/shuttle valve with signal external
CAPACITY: 10 L/min. | CAVITY: T-13A



CONFIGURATION

B	Control	External 1/4 BSPP Port
B	Cracking Pressure	15 psi (1 bar)
N	Seal Material	Buna-N
(none)	Material/Coating	Standard Material/Coating



The back-to-back check valve combines two simple check valves into a single cartridge. It connects the higher of two work ports to the signal or common port. The signal is sensed at an external port located in the hex-end of the cartridge.

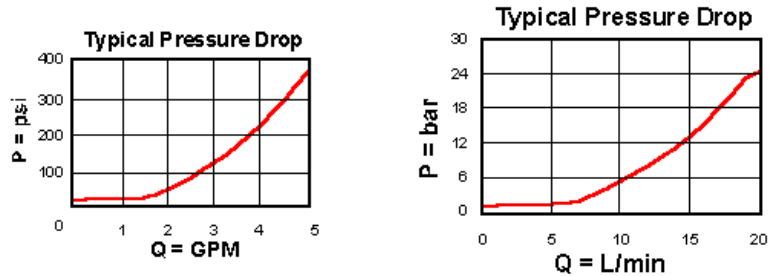
TECHNICAL DATA

Cavity	T-13A
Series	1
Capacity	10 L/min.
Maximum Operating Pressure	350 bar
Maximum Valve Leakage at 110 SUS (24 cSt)	0,3 cc/min.
Valve Hex Size	22,2 mm
Valve Installation Torque	41 - 47 Nm
Seal kit - Cartridge	Buna: 990-010-007
Seal kit - Cartridge	Polyurethane: 990-010-002
Seal kit - Cartridge	Viton: 990-010-006
Model Weight	0.09 kg.

TECHNICAL FEATURES

- Back-to-back check cartridges feature hardened, spherically lapped, guided poppets and a lightly stressed helical spring that result in excellent wear characteristics and extremely low leakage rates.
- The back-to-back checks do not provide a means of lowering a signal. They will trap a high signal if the load pressures drop to a lower pressure. Some means of bleeding off the signal should be provided.
- Incorporates the Sun floating style construction to minimize the possibility of internal parts binding due to excessive installation torque and/or cavity/cartridge machining variations.

PERFORMANCE CURVES



CONFIGURATION OPTIONS

CONTROL		
Standard Options	B	External 1/4 BSPP Port
	E	External 4-SAE Port
CRACKING PRESSURE		
Standard Options	B	15 psi (1 bar)
SEAL MATERIAL		
Standard Options	N	Buna-N
	V	Viton
MATERIAL/COATING		
Standard Options		Standard Material/Coating
	/AP	Stainless Steel, Passivated

Copyright © 2002-2014 Sun Hydraulics Corporation. All rights reserved.