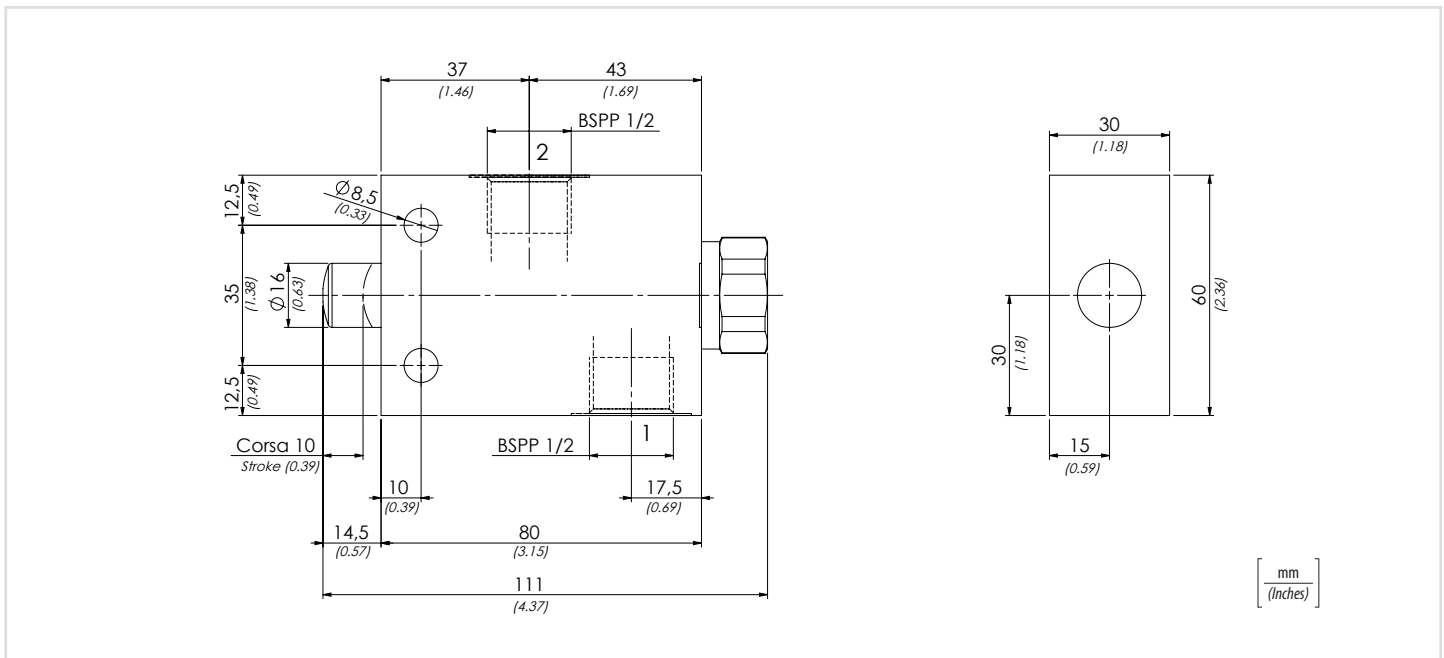
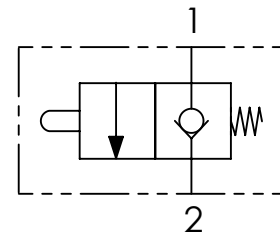


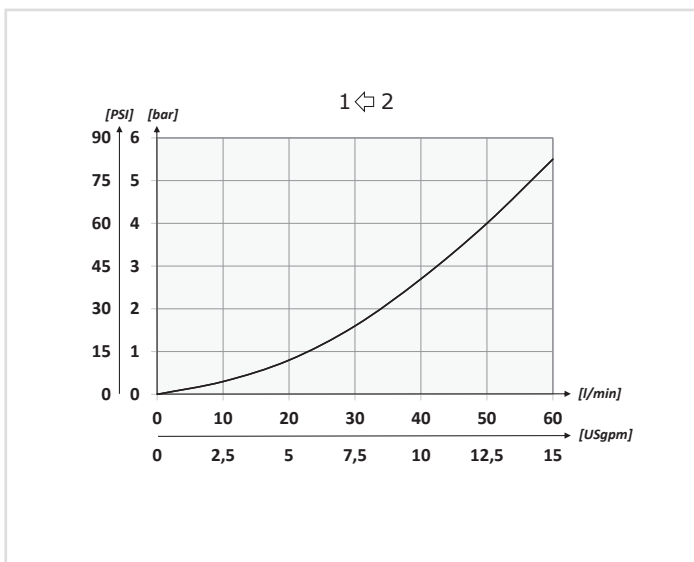
<b>Codice ordinazione</b> <b>Ordering code</b>	01	02
	<b>FCM</b>	<b>120N</b>

<b>01</b>	Valvole di fine corsa normalmente chiuse (Normally closed end - stroke valves)	<b>FCM</b>
<b>02</b>	Dimensione (Size)	<b>120N</b>

### Schema idraulico - Hydraulic circuit



### Performances



### Dati tecnici - Technical data

<b>Olio idraulico/Mineral oil</b>	<b>ISO 6743/4 (DIN 51524)</b>
<b>Viscosità olio/Oil viscosity</b>	<b>15-250 mm<sup>2</sup>/s (15 to 250 cSt)</b>
<b>Classe di contaminazione max con filtro</b> Max contamination index with filter	<b>ISO 4406:1999 Classe 19/17/14</b>
<b>Temperatura dell'olio/Oil temperature</b>	<b>-20°C +80°C</b> <b>-4°F + 176°F</b>
<b>Temperatura ambiente/Ambient temperature</b>	<b>-20°C +50°C</b> <b>-4°F + 122°F</b>
<b>È indispensabile l'utilizzo di un filtro per proteggere la valvola (filtrazione consigliata 15 µm)</b> It is necessary a filter use to protect the valve (advised filtration 15 µm)	

### Caratteristiche tecniche - Technical characteristics

Tipo Type	Portata max Max flow l/min-USgpm	Pressione max (bar) Max pressure (PSI)	Peso approssimativo Approx weight kg-lb
<b>FCM120N</b>	<b>60 (15.8)</b>	<b>300 (4350)</b>	<b>1,01 (2.22)</b>