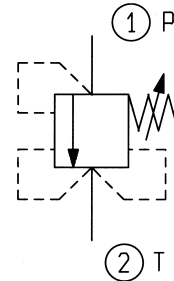
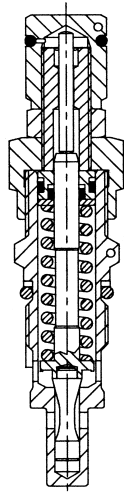


CAVITA' - CAVITY 008



DATI TECNICI / TECHNICAL DATA

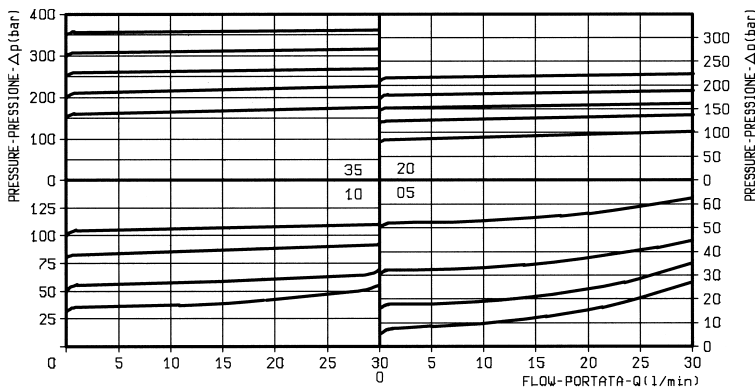
Coppia di serraggio
Installation torque 46-51 Nm

Pressione di lavoro max.
Max. working pressure 350 bar

Portata max.
Flow max. 30 l/min

Peso
Weight 0.17 kg

Funzionamento corretto con pressione sul circuito secondario non inferiore a 20 bar.
For good performance, the pressure in the secondary circuit should not drop below 20 bar.



X	REGOLAZIONI ADJUSTMENTS	
03	vite interna esagono incassato leakproof inner hex. socket screw	
	cappello per piombatura sealing cap codice / ordering code 03.05.01.002	

MOLLE / SPRINGS					
Z	Campo taratura min - max bar Adj. press. range bar	Incremento press. bar / giro vite Press. increase bar / turn	Taratura standard bar (Q = 5 l/min) Std. setting bar (Q = 5 l/min)	Cod. ordinazione Ordering code	Colore Colour
05	5-50	11.5	50	03.51.01.077	nero black
10	30-100	23.5	100	03.51.01.076	blu blue
20	50-210	47	200	03.51.01.075	verde green
35	100-350	82	350	03.51.01.059	giallo yellow

Y		ATTACCHI / PORT SIZE
99		Cartuccia/Cartridge