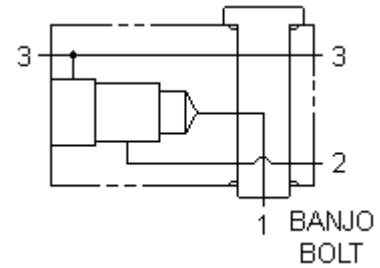


Functional Group:

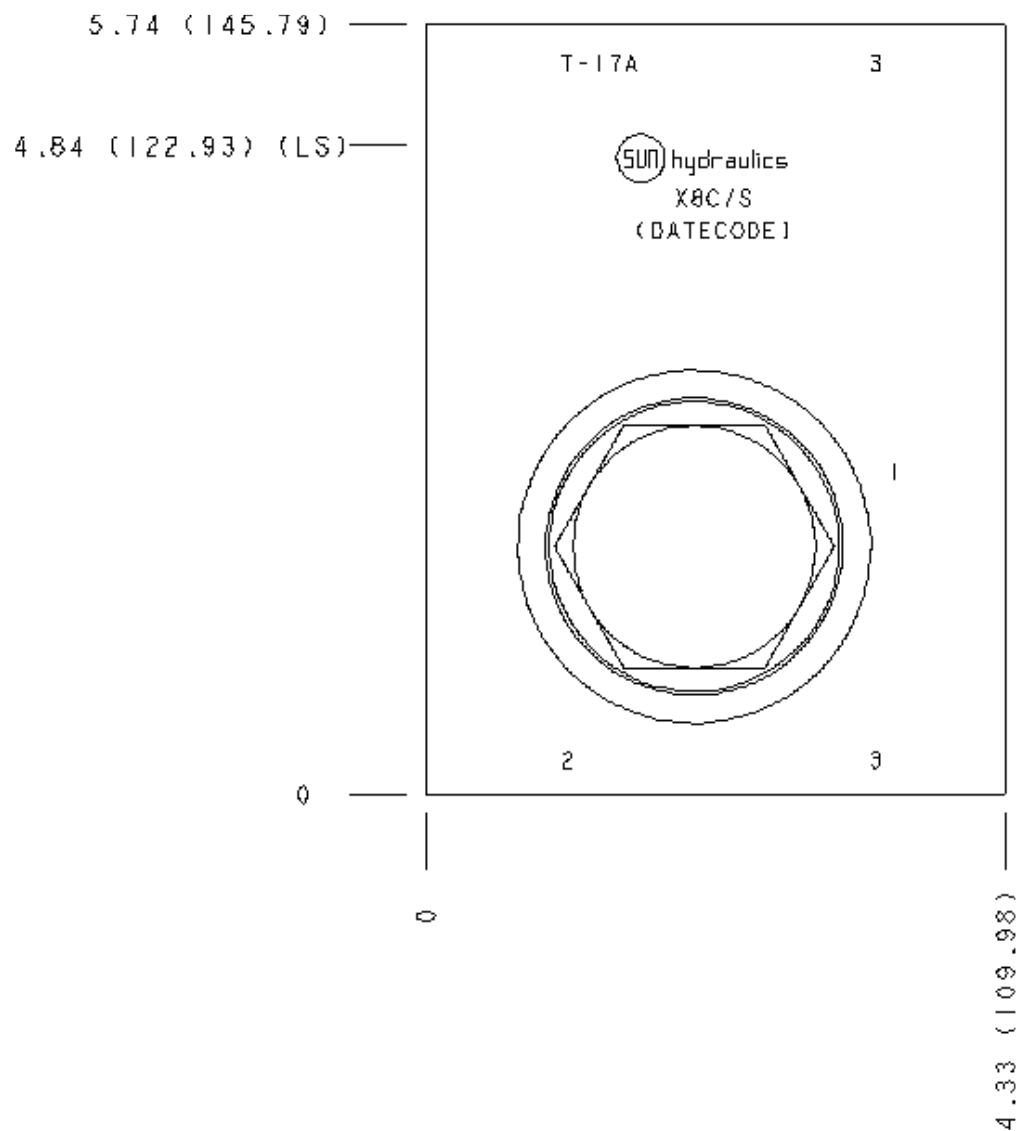
**Products : Manifolds : Line Mount : Counterbalance : 3 Port : Banjo Bolt - Through port 3, with side ports**

Model:

**X8C/S**



## Face: 6



Technical Data

	U.S. Units	Metric Units
Cavity	T-17A	
Banjo Bolt Hex	1.81	
Banjo Bolt Installation Torque	235 lb. ft. to 260 lb. ft. (320 Nm to 350 Nm)	
Body Features	Through port 3	
Body Type	Line mount	
Interface	Banjo Bolt	
Open Cavity Quantity	1	

Option Selection

U.S. Dollar

Aluminum Body Pressure Rating: **3000 psi (210 bar)**  
Ductile Iron Body Pressure Rating: **5000 psi (350 bar)**

Model Code	Description
X8C	Aluminum, Buna-N, U.S. Units
X8C/S	Ductile Iron, Buna-N, U.S. Units

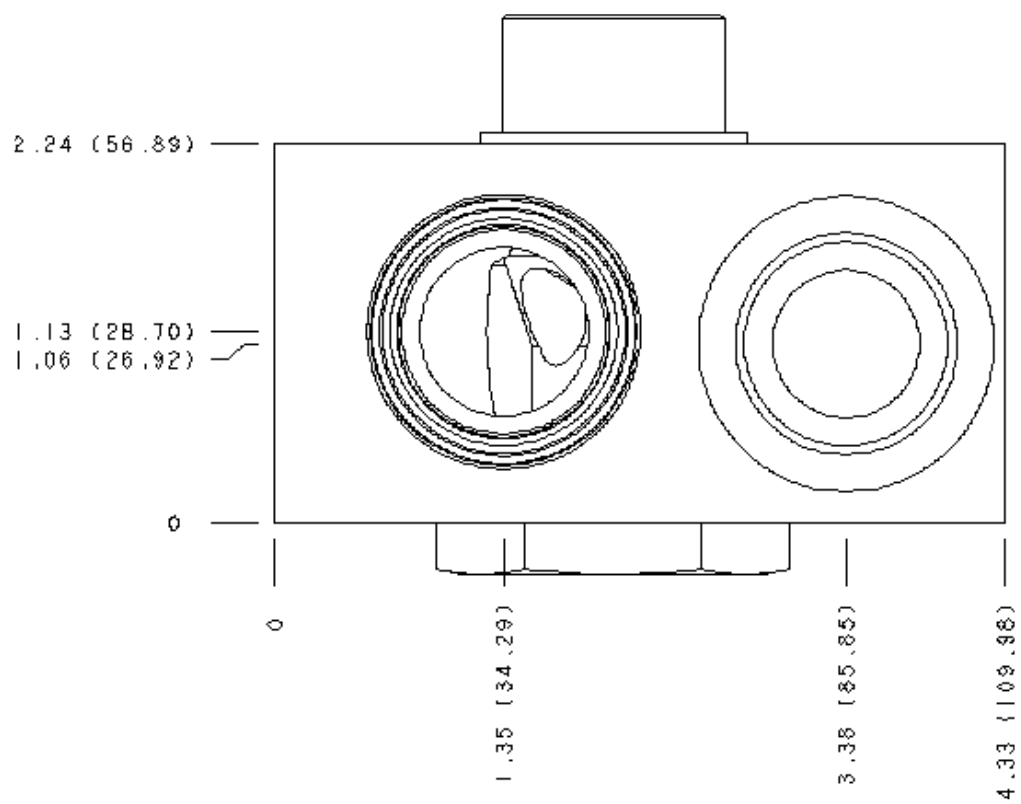
Display Components

Part	Description	Quantity
330-073-005	Connector	1
505-012-005	O-Ring	1

Special Notes

- Important:** Please carefully consider the maximum system pressure to which the manifold will be exposed. The pressure rating of the manifold is dependent on the manifold material, with the port type and sizing a secondary consideration. For example, manifolds constructed of aluminum are not rated for system pressures higher than 3000 psi (210 bar), regardless of the port type and size specified.

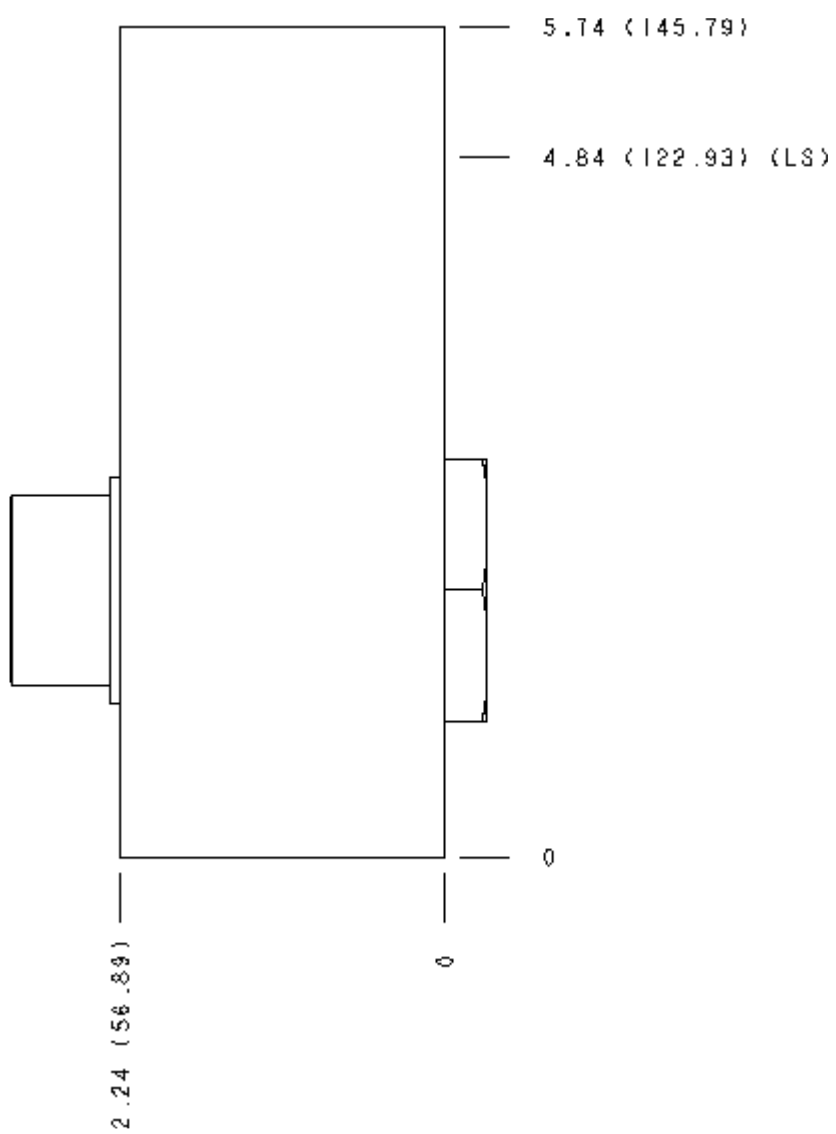
Face 2



---

**Face 5**

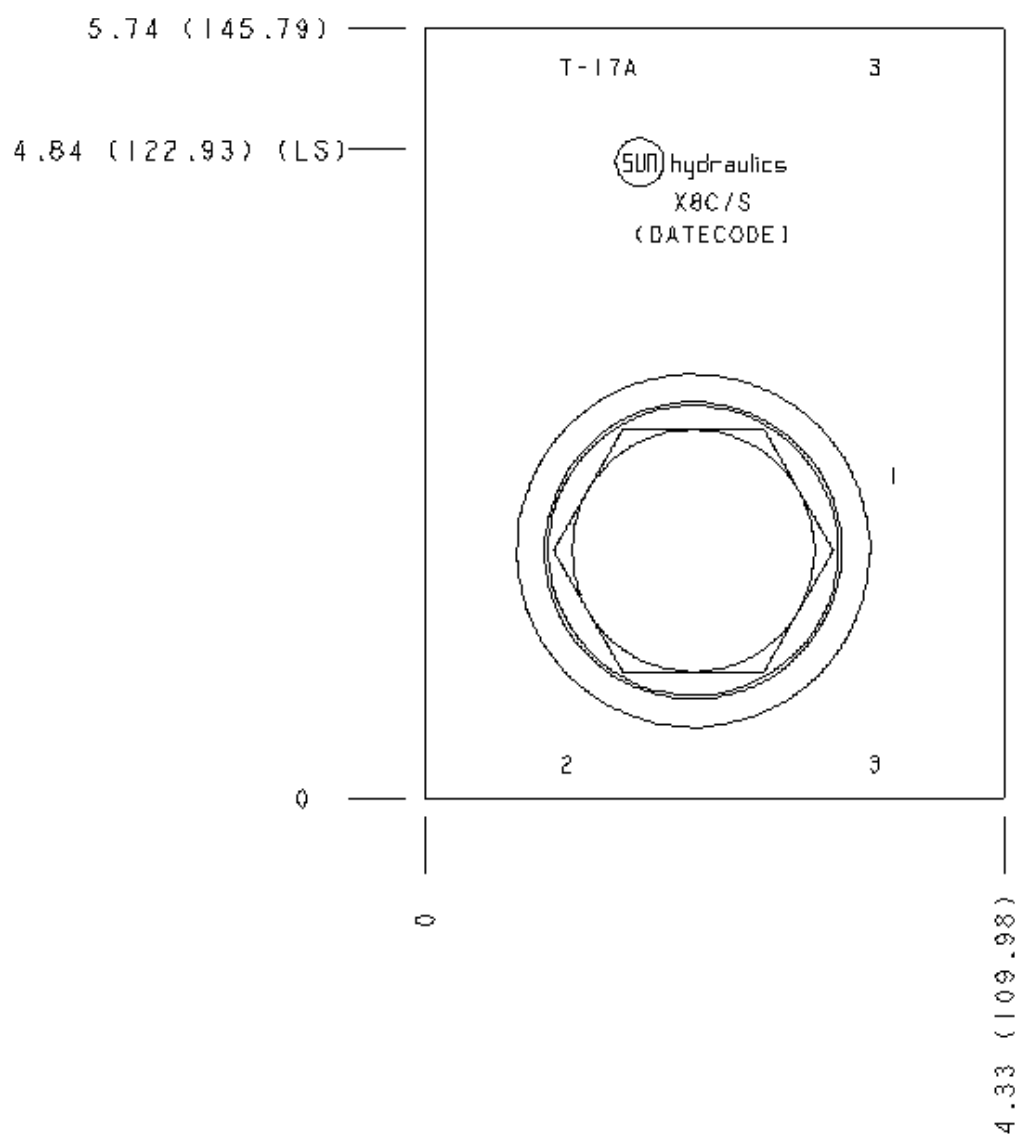
---



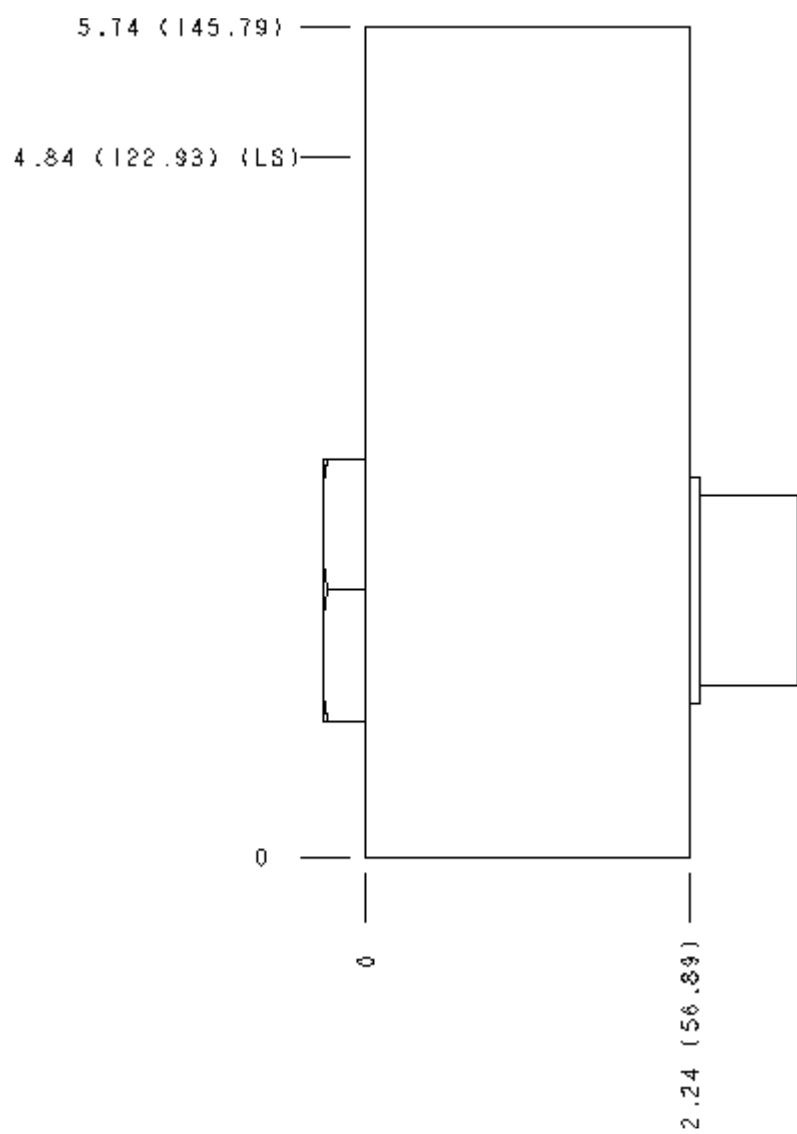
---

**Face 6**

---



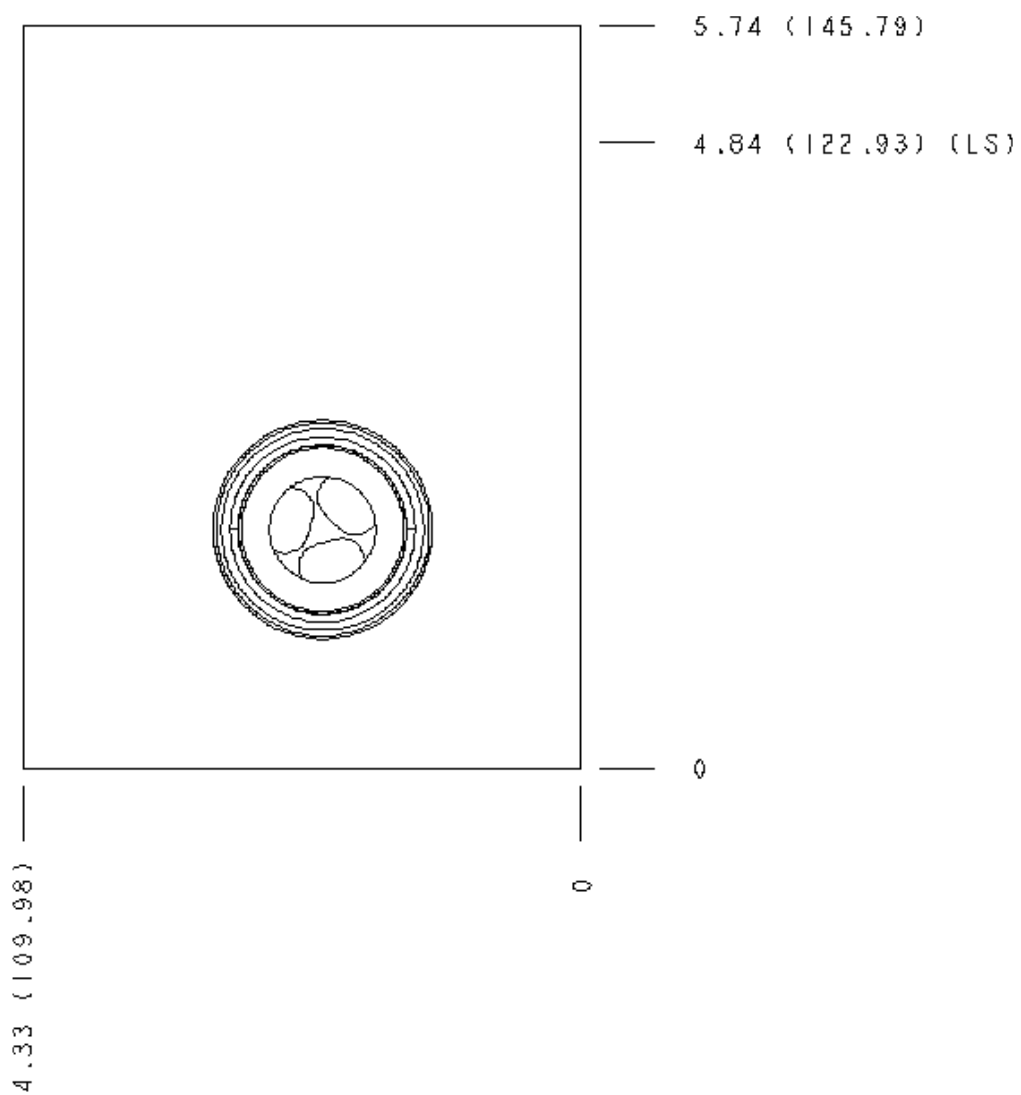
**Face 7**



---

**Face 8**

---



---

**Face 10**

---

