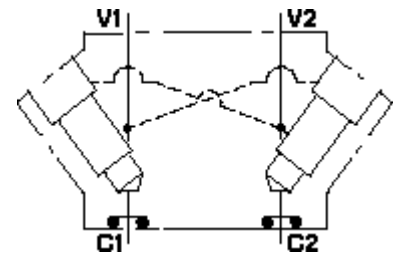


Functional Group:

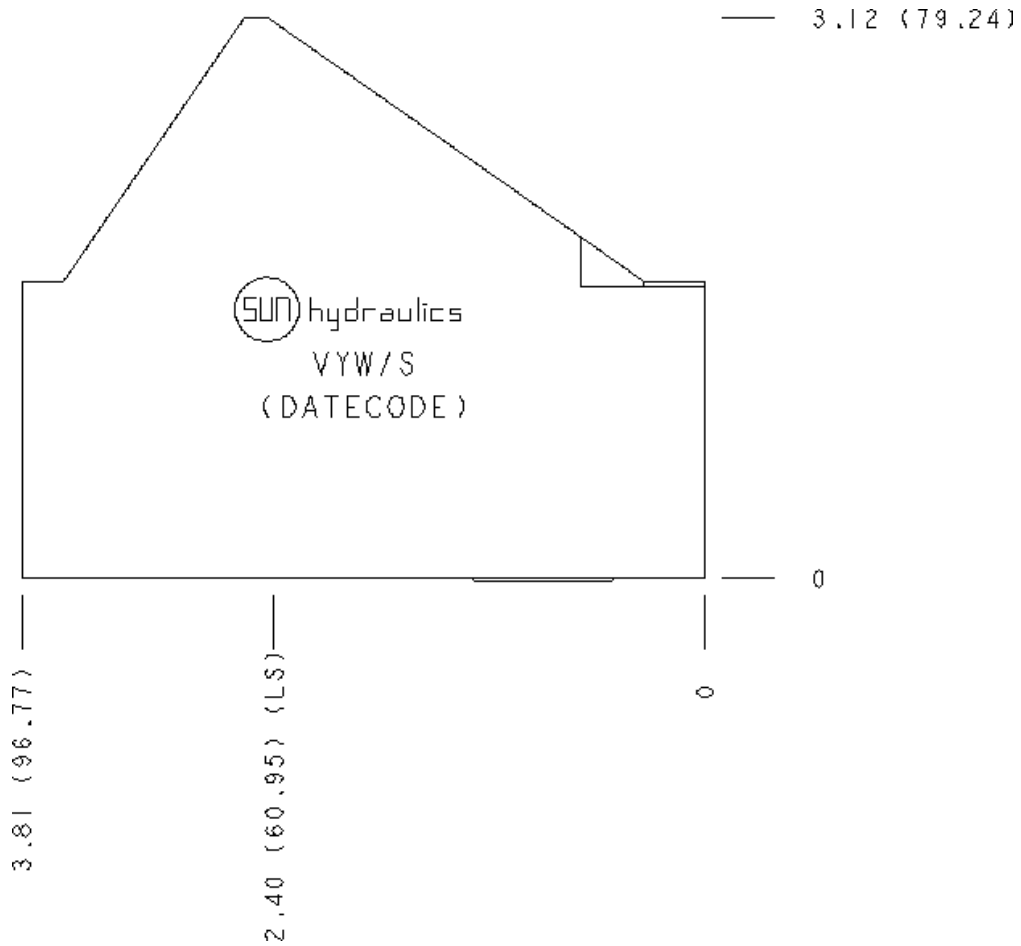
Products : Manifolds : Line Mount : Counterbalance : 3 Port : Cross pilot with 2 gasket ports

Model:

VYW/S



Face: 10



Port Headings and Sizes

VYW Ports V1 & V2

3/4" BSPP

Technical Data

| | U.S. Units | Metric Units |
|--|------------|--------------|
| | | |

| | | |
|-------------------------------|---|----------|
| Cavity | T-2A | |
| Body Features | Direct mount, cross pilot, 2 gasket ports | |
| Body Type | Line mount | |
| Interface | Sun | |
| Open Cavity Quantity | 2 | |
| Mounting Hole Diameter | .41 in. | 10,4 mm |
| Mounting Hole Depth | Through | |
| Mounting Hole C'bore Diameter | .59 in. | 15,0 mm |
| Mounting Hole Quantity | 3 | |
| Model Weight | 5.68 lb. | 2.58 kg. |

Option Selection

U.S. Dollar

Aluminum Body Pressure Rating: **3000 psi (210 bar)**
 Ductile Iron Body Pressure Rating: **5000 psi (350 bar)**

| Model Code | Description |
|------------|----------------------------------|
| VYW | Aluminum, Buna-N, U.S. Units |
| VYW/S | Ductile Iron, Buna-N, U.S. Units |
| VYW/V | Aluminum, Viton, U.S. Units |
| VYW/Y | Ductile Iron, Viton, U.S. Units |

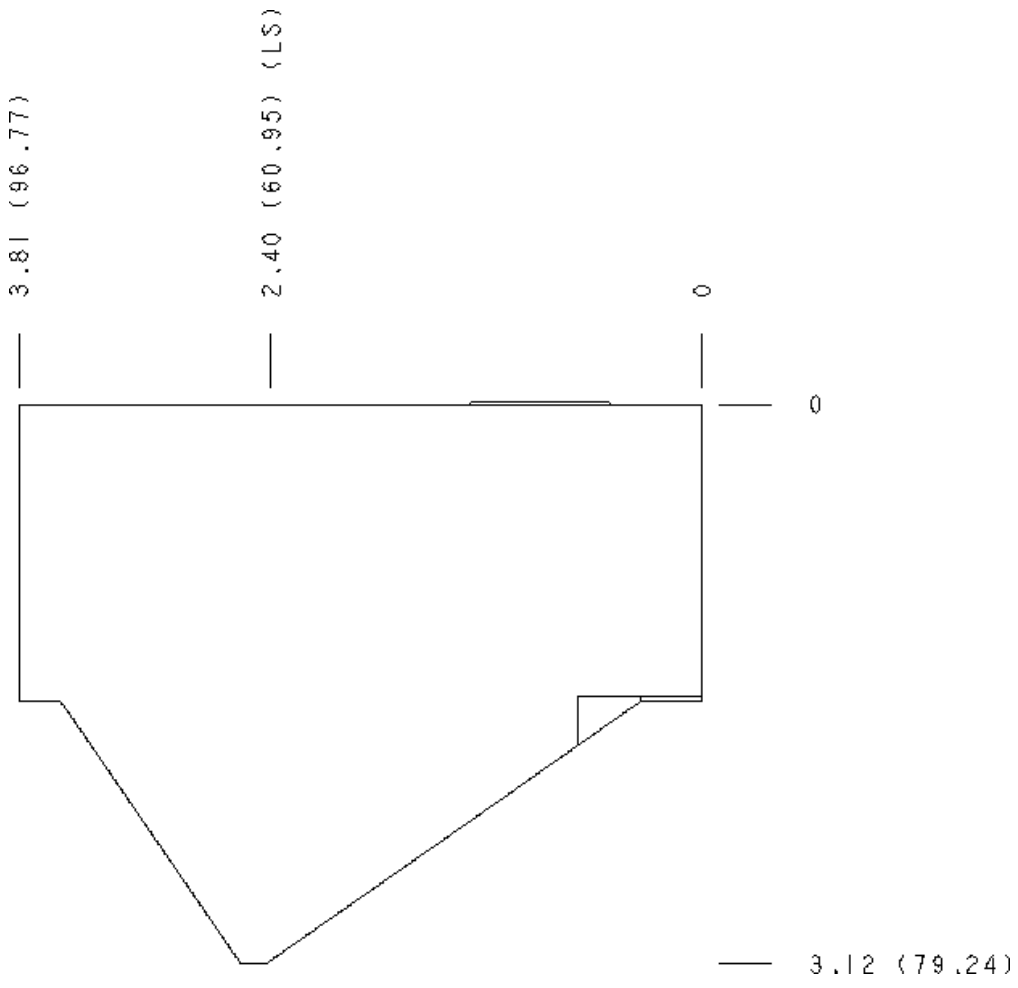
Display Components

| Part | Description | Quantity |
|-------------|-------------|----------|
| 500-001-114 | O-Ring | 2 |

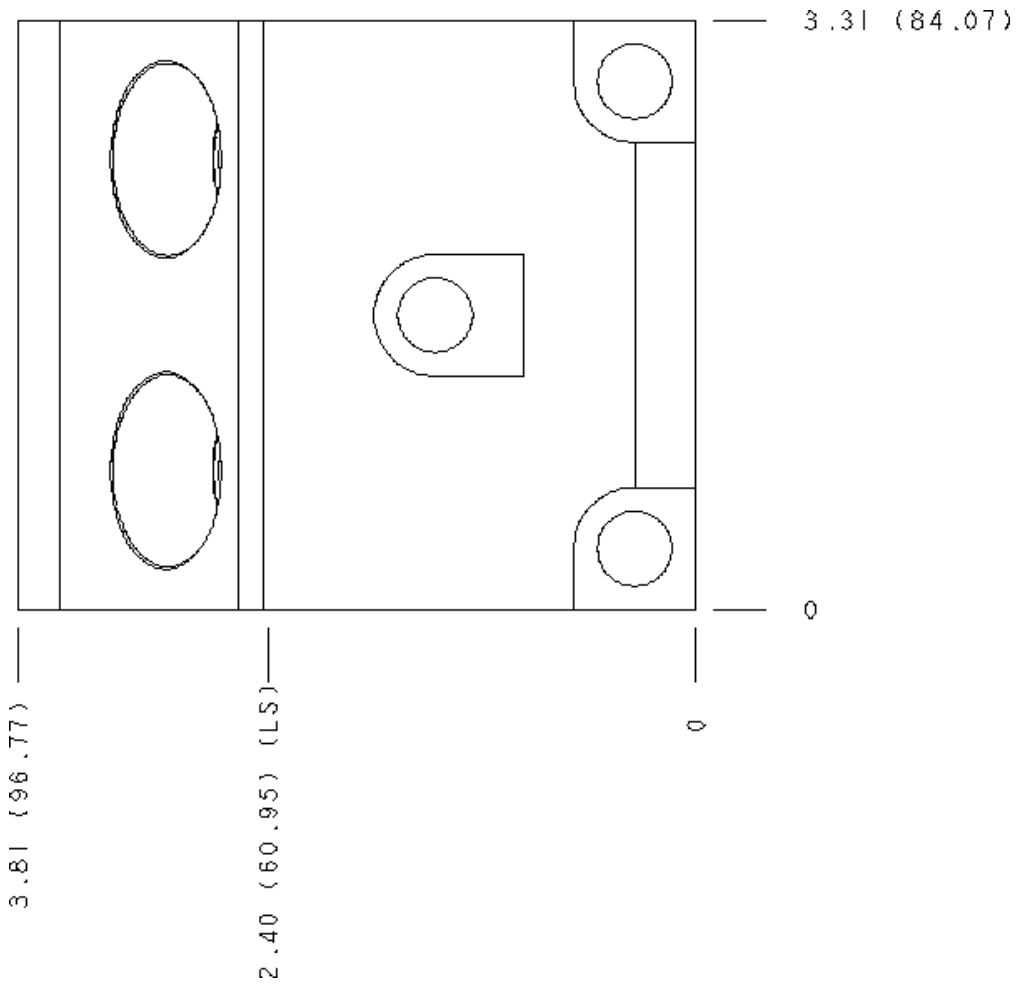
Special Notes

- **Important:** Please carefully consider the maximum system pressure to which the manifold will be exposed. The pressure rating of the manifold is dependent on the manifold material, with the port type and sizing a secondary consideration. For example, manifolds constructed of aluminum are not rated for system pressures higher than 3000 psi (210 bar), regardless of the port type and size specified.

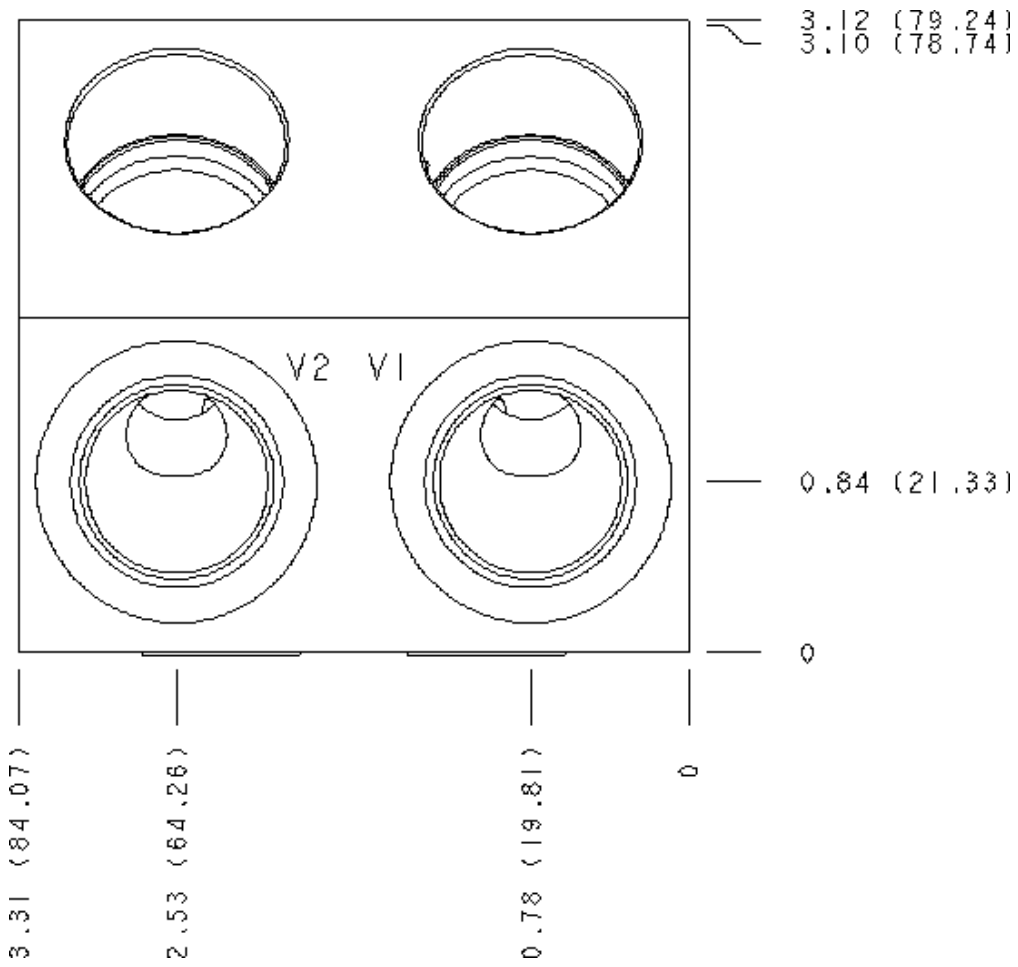
Face 2



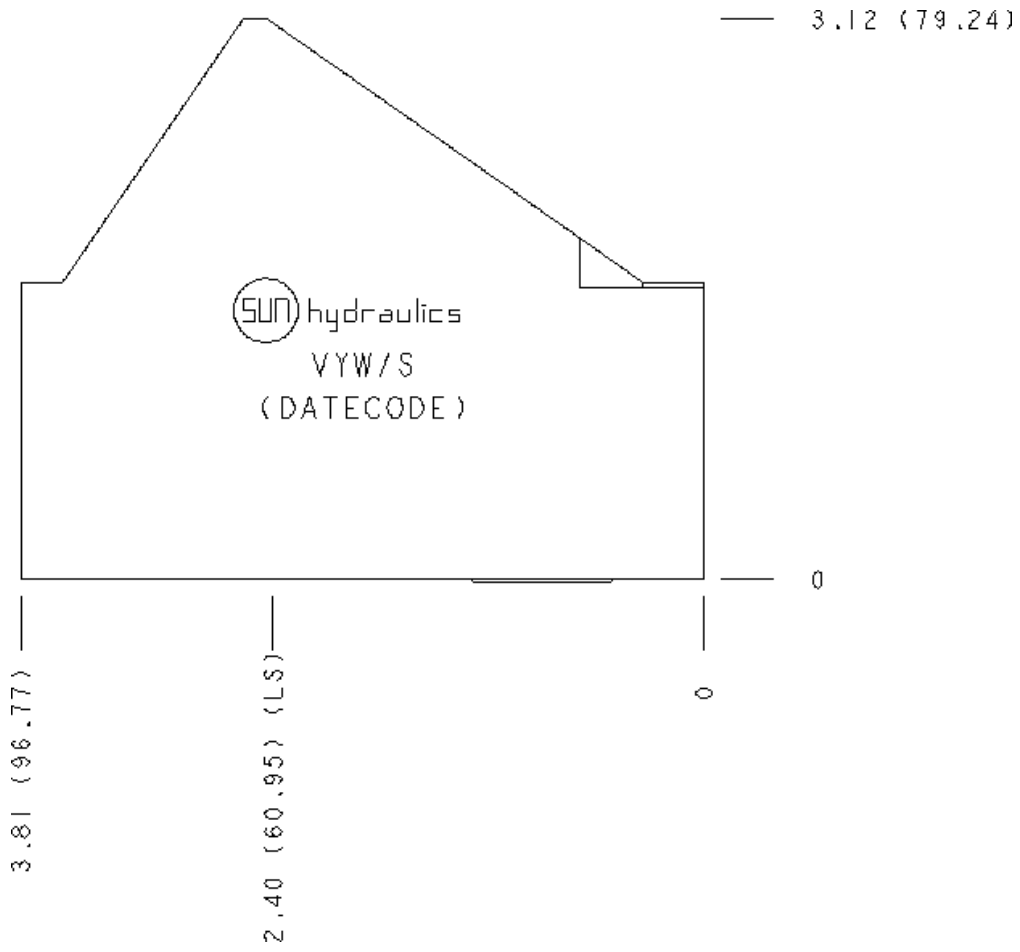
Face 6



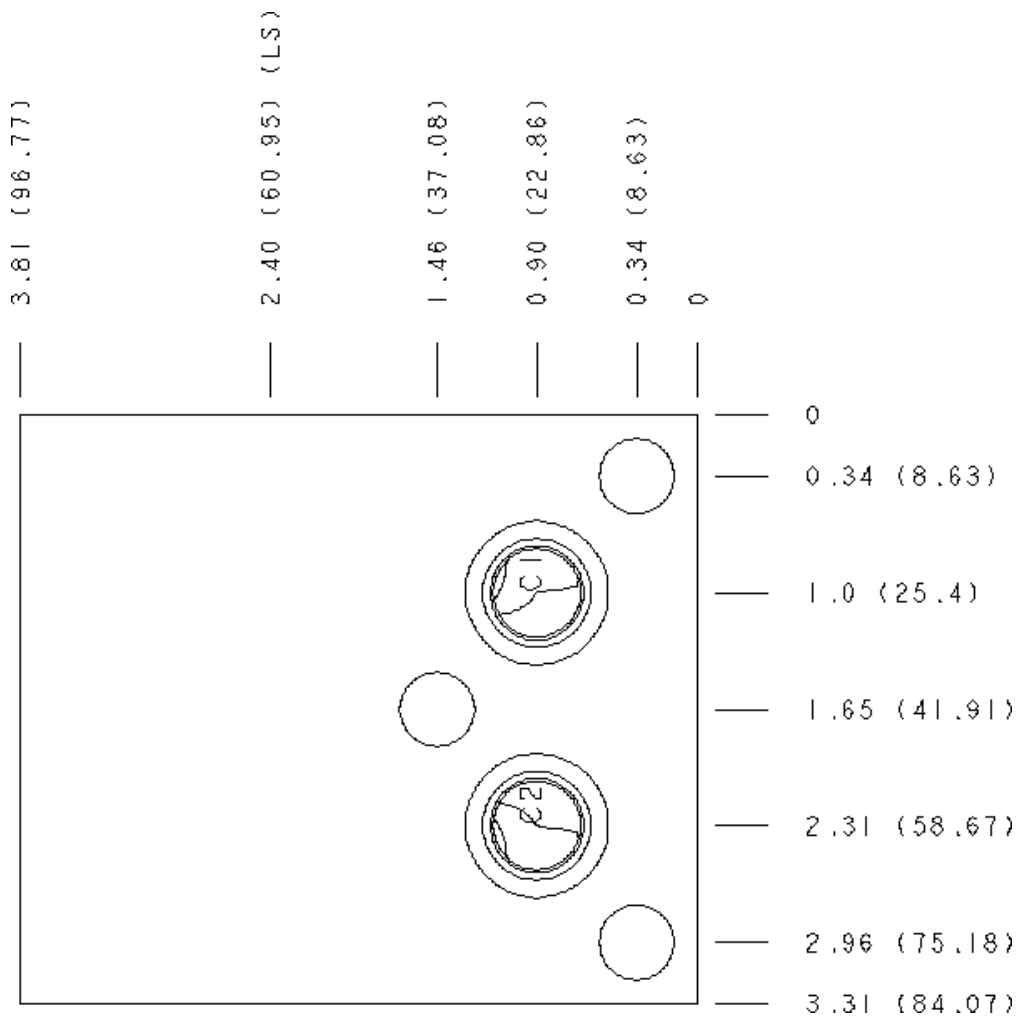
Face 9



Face 10



Face 14



Copyright © 2002-2012 Sun Hydraulics Corporation. All rights reserved.
 Terms and Conditions - ISO Certification - Statement of Privacy