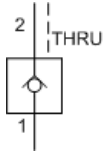


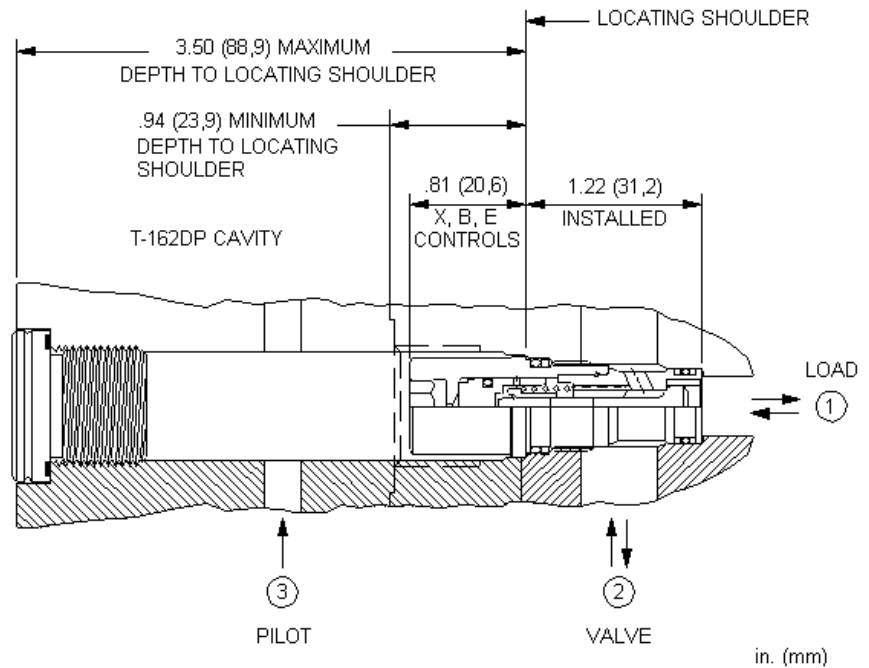
MODEL
CKBM

Pilot-to-open check valve with sealed pilot - insert style
CAPACITY: 30 L/min. | CAVITY: T-162DP



CONFIGURATION

X	Control	Not Adjustable, Standard Hydraulic Pilot
C	Cracking Pressure	30 psi (2 bar)
N	Seal Material	Buna-N



This valve is a pilot to open check valve. It has a sealed pilot, a steel seat, and is non-vented. It allows free flow from the valve (port 2) to the load (port 1) and blocks flow in the opposite direction. Pressure at the pilot will open the valve from port 1 to port 2. Pilot pressure needed at the pilot to open the valve is directly proportional to the load pressure at port 1. Pressure at port 2 directly opposes pilot pressure.

TECHNICAL DATA

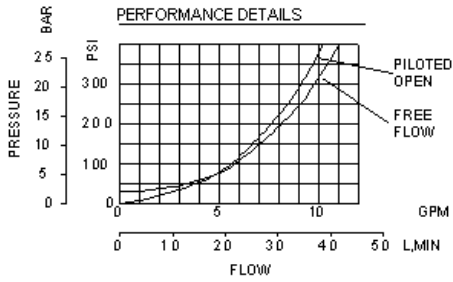
Cavity	T-162DP
Series	0
Capacity	30 L/min.
Pilot Ratio	3:1
Maximum Operating Pressure	350 bar
Maximum Valve Leakage at 110 SUS (24 cSt)	0,07 cc/min.
Valve Internal Hex Size	8 mm
Valve Installation Torque	27 - 34 Nm
Seal kit - Cartridge	Buna: 990-162-007
Seal kit - Cartridge	Polyurethane: 990-162-002
Seal kit - Cartridge	Viton: 990-162-006
Model Weight	0.06 kg.

TECHNICAL FEATURES

- This valve is what we call an Insert style. It is meant to be buried in a manifold or actuator. The cavity drawing for the T-162DP cavity contains a lot of detailed information and should be studied closely when applying this valve.
- Provides hose break protection, prevents loads from drifting and positively locks pressurized loads.
- Extremely low leakage. The seat and poppet are heat treated for long life. If the load drifts due to the valve, the seat has probably been damaged by contamination and the valve should be replaced.

- Sealed pilot for use in circuits where cross port leakage is undesirable.
- Note: Available only with 30 psi or 75 psi (2 bar or 5 bar) check valve cracking pressures.
- Pilot-to-open check cartridges are locking valves, not motion control valves. For motion control applications, use counterbalance valves.
- Incorporates the Sun floating style construction to minimize the possibility of internal parts binding due to excessive installation torque and/or cavity/cartridge machining variations.

PERFORMANCE CURVES



CONFIGURATION OPTIONS

CONTROL

Standard Options	X	Not Adjustable, Standard Hydraulic Pilot
------------------	---	--

CRACKING PRESSURE

Standard Options	C	30 psi (2 bar)
------------------	---	----------------

SEAL MATERIAL

Standard Options	N	Buna-N
	V	Viton

Copyright © 2002-2014 Sun Hydraulics Corporation. All rights reserved.