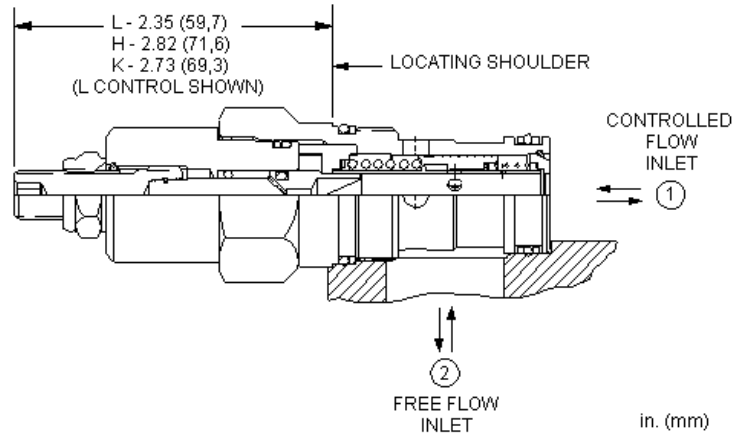
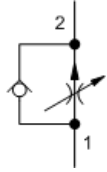


MODEL
FDCB

Fully adjustable pressure compensated flow control valve with reverse flow check
CAPACITY: 45 L/min. | CAVITY: T-5A



CONFIGURATION

L	Control	Standard Screw Adjustment
A	Adjustment Range	.1 - 12 gpm (0,4 - 45 L/min.)
N	Seal Material	Buna-N
(none)	Material/Coating	Standard Material/Coating

NOTES

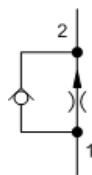
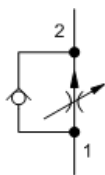
For cartridges configured with an O control (panel mount handknob), a .75 in. (19 mm) diameter hole is required in the panel.

Fully adjustable, pressure-compensated flow controls with reverse-flow check provide precise flow regulation for meter-in or meter-out applications where there may be wide pressure fluctuations. They are infinitely adjustable from nearly closed up to the maximum flow. An integral high-capacity check valve provides unrestricted flow from port 2 to port 1.

TECHNICAL DATA

Cavity	T-5A
Series	2
Capacity	45 L/min.
Maximum Operating Pressure	350 bar
Adjustment - Number of Counterclockwise Turns - Fully Closed to Fully Open	5
Valve Hex Size	28,6 mm
Valve Installation Torque	61 - 68 Nm
Adjustment Screw Internal Hex Size	4 mm
Locknut Hex Size	15 mm
Locknut Torque	9 - 10 Nm
Seal kit - Cartridge	Buna: 990-203-007
Seal kit - Cartridge	Viton: 990-203-006
Model Weight	0.00 kg.

SYMBOLS

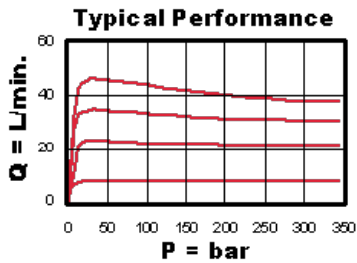
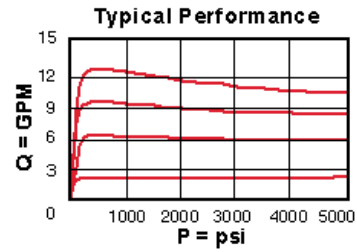
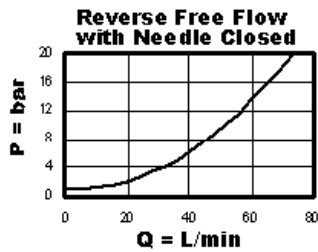
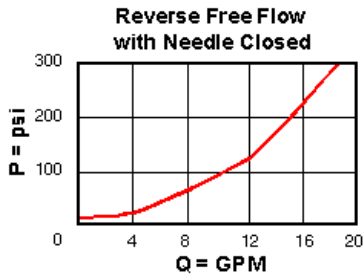


TECHNICAL FEATURES

- All 2-port flow control cartridges are physically and functionally interchangeable (i.e. same flow path, same cavity for a given frame size). However, cartridge extension dimensions from the mounting surface may vary.
- A balanced adjustment mechanism allows for easy adjustment even at high pressures.

- The sharp-edged orifice design minimizes flow variations due to viscosity changes.
- Minimum leakage is .2 gpm (0,8 L/min) when the adjustment mechanism is turned to the shut-off position.

PERFORMANCE CURVES



CONFIGURATION OPTIONS

CONTROL

Preferred Options	L	Standard Screw Adjustment
	H	Calibrated Handknob with Detent Lock
Standard Options	K	Handknob
	Y	Tri-Grip Handknob

ADJUSTMENT RANGE

Preferred Options	A	.1 - 12 gpm (0,4 - 45 L/min.)
Standard Options	B	.1 - 3 gpm (0,4 - 11 L/min.)

SEAL MATERIAL

Preferred Options	N	Buna-N
Standard Options	V	Viton

MATERIAL/COATING

Standard Options		Standard Material/Coating
	/LH	Mild Steel, Zinc-Nickel

Copyright © 2002-2014 Sun Hydraulics Corporation. All rights reserved.