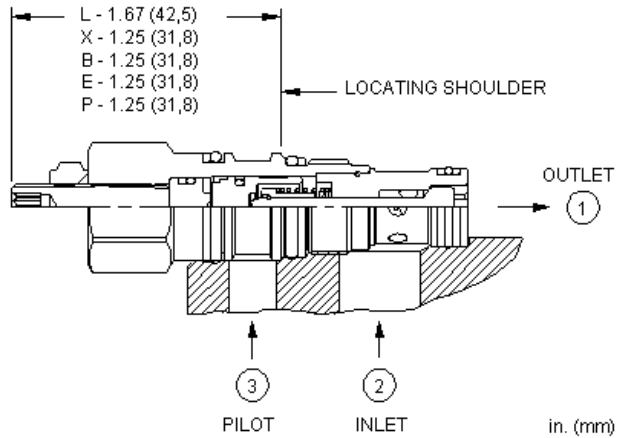
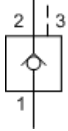


MODEL  
CKBD

Pilot-to-open check valve with sealed pilot  
CAPACITY: 30 L/min. | CAVITY: T-163A



**CONFIGURATION**

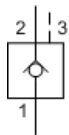
<b>X</b>	Control	Standard Pilot
<b>C</b>	Cracking Pressure	30 psi (2 bar)
<b>N</b>	Seal Material	Buna-N
<b>(none)</b>	Material/Coating	Standard Material/Coating

This valve is a pilot to open check valve. It has a sealed pilot, a steel seat, and is non-vented. It allows free flow from the valve (port 2) to the load (port 1) and blocks flow in the opposite direction. Pressure at the pilot (port 3) will open the valve from port 1 to port 2. Pilot pressure needed at port 3 to open the valve is directly proportional to the load pressure at port 1. Pressure at port 2 directly opposes pilot pressure.

**TECHNICAL DATA**

Cavity	T-163A
Series	0
Capacity	30 L/min.
Pilot Ratio	3:1
Maximum Operating Pressure	350 bar
Maximum Valve Leakage at 110 SUS (24 cSt)	0,07 cc/min.
Valve Hex Size	19,1 mm
Valve Installation Torque	27 - 34 Nm
Seal kit - Cartridge	Buna: 990-163-007
Seal kit - Cartridge	Polyurethane: 990-163-002
Seal kit - Cartridge	Viton: 990-163-006
Model Weight	0.09 kg.

**SYMBOLS**



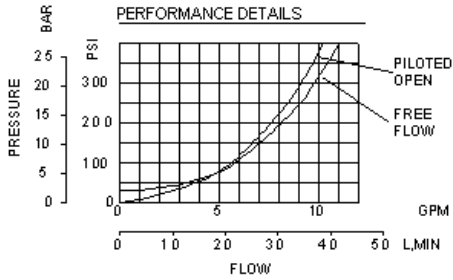
**TECHNICAL FEATURES**

- Provides hose break protection, prevents loads from drifting and positively locks pressurized loads.
- Extremely low leakage. The seat and poppet are heat treated for long life. If the load drifts due to the valve, the seat has probably been damaged by contamination and the valve should be replaced.

- Sealed pilot for use in circuits where cross port leakage is undesirable.
- Note: Available only with 30 psi or 75 psi (2 bar or 5 bar) check valve cracking pressures.
- Pilot-to-open check cartridges are locking valves, not motion control valves. For motion control applications, use counterbalance valves.
- For models with manual load release control option, turn load release clockwise to release load.
- Incorporates the Sun floating style construction to minimize the possibility of internal parts binding due to excessive installation torque and/or cavity/cartridge machining variations.

---

## PERFORMANCE CURVES




---

## CONFIGURATION OPTIONS

### CONTROL

<b>Standard Options</b>	L	Manual Load Release
	X	Standard Pilot

### CRACKING PRESSURE

<b>Standard Options</b>	C	30 psi (2 bar)
	E	75 psi (5 bar)

### SEAL MATERIAL

<b>Standard Options</b>	N	Buna-N
	V	Viton

### MATERIAL/COATING

<b>Standard Options</b>		Standard Material/Coating
	/AP	Stainless Steel, Passivated
	/LH	Mild Steel, Zinc-Nickel

Copyright © 2002-2014 Sun Hydraulics Corporation. All rights reserved.