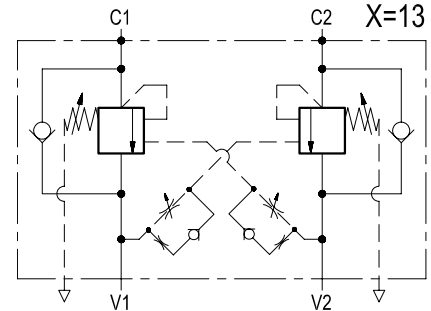
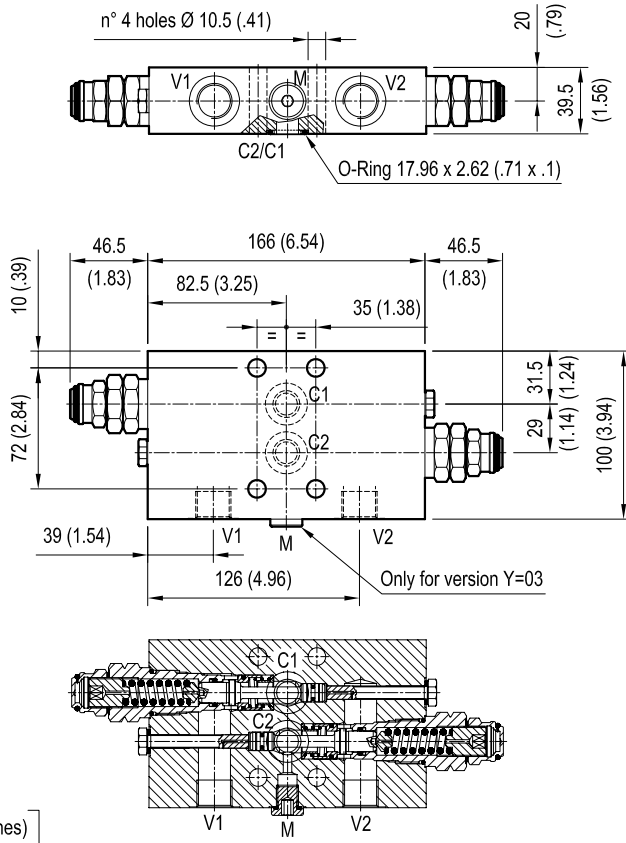


VBSO-DE-CCAP-33-FC2

05.44.31 - X - Y - Z



TECHNICAL DATA

Operating pressure: up to 210 bar (3000 psi)

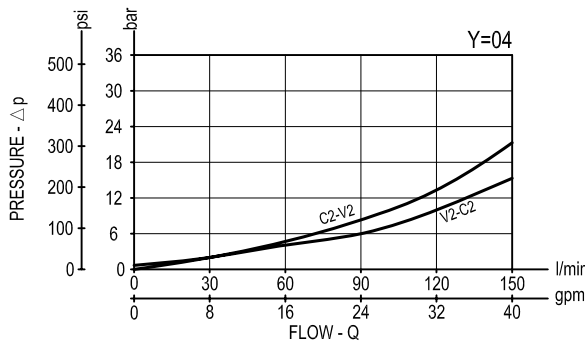
Max flow: 150 l/min (40 gpm)

Aluminium body

Weight: 2.80 kg (6.2 lbs)

Relief setting: at least 1.3 times the highest expected load.

It provides static and dynamic control of load by regulating the flow IN and OUT of the actuator, through ports C1 and C2. This valve module includes 2 sections, each one composed by a check and a relief valve assisted by pressure in the opposite line: the check section allows free flow into the actuator, then holds the load against reverse movement; with pilot pressure applied at the line across, the pressure setting of the relief is reduced in proportion to the stated ratio until opening and allowing controlled reverse flow. The relief spring chambers are vented to air: relief and piloted opening are independent of back-pressure at V1 or V2.



X	PILOT RATIO	
03	4 : 1	
13	4 : 1	

Z	SPRINGS				
	Adj. press. range bar (psi)	Pres. increase bar/turn (psi/turn)	Std. setting bar (psi) Q=5 l/min	Ordering code	Colour
35	150-350 (2175-5000)	110 (1595)	350 (5000)	03.51.01.184	yellow

Y	PORT SIZE		
	V1-V2	C1-C2	M
03	G 1/2	Ø 13 (0.51)	G 1/4
04	G 3/4	Ø 13 (0.51)	/