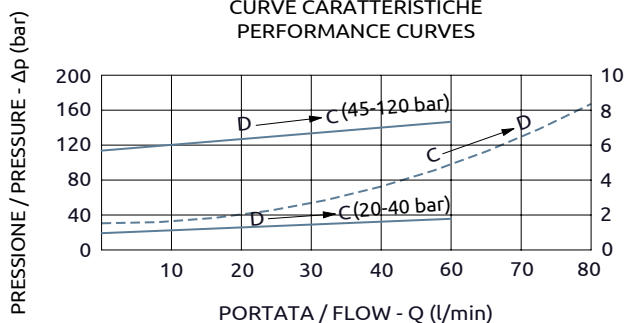
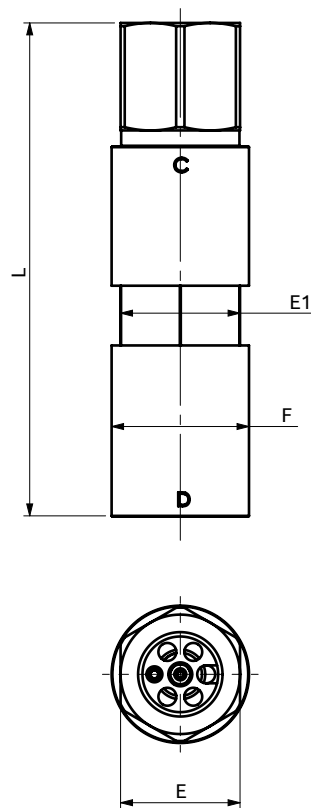
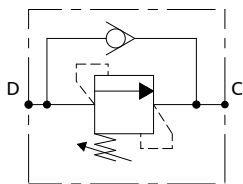




Valvola di sequenza  
Sequence valve



Corpo in acciaio / Steel body

A040451.03.00	124	Ø34.5	HEX30	HEX30
A040451.04.00	124	Ø34.5	HEX30	HEX30
COD.	L	F	E	E1

DESCRIZIONE	DESCRIPTION
Valvola di sequenza con taratura regolabile.	Sequence valve with adjustable setting.



Codice Ordinazione	Campo di Taratura	Taratura Standard	Incremento per Giro	Portata Massima	Pressione Max	Dimensione Porte		Peso
Ordering Code	Pressure Range	Standard Setting	Pressure Increase	Max Flow	Max Pressure	Port Size		Weight
A040451.03.00	20-40 bar	20 bar	~16 bar/turn	80 l/min	350 bar	D-C	1/2"G	0.6 kg
A040451.04.00	45-120 bar	120 bar	~47 bar/turn	80 l/min	350 bar	D-C	1/2"G	0.6 kg