

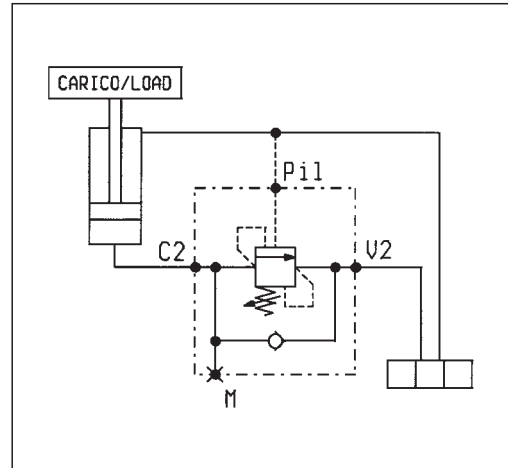
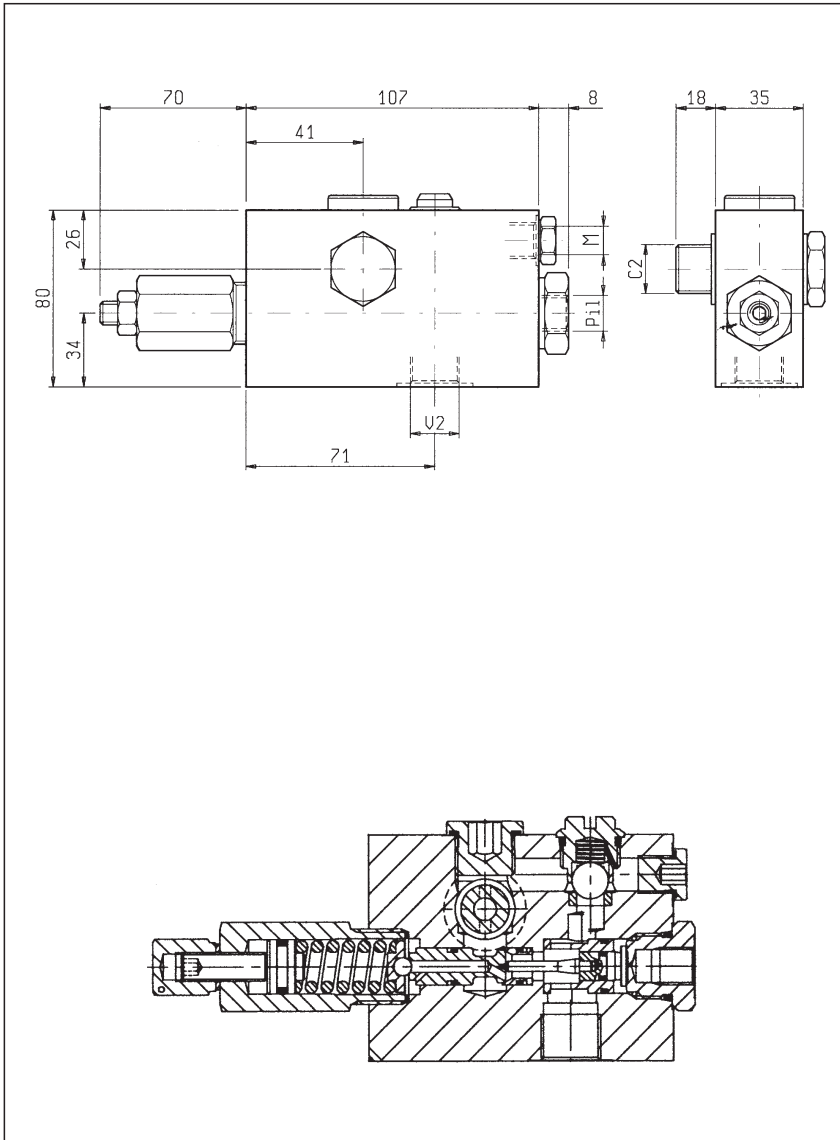


BILANCIAMENTO, SEMPLICE EFFETTO, SERIE "NBA",
FLANGIABILI

PILOT ASSISTED, FLANGEABLE, SERIES "NBA" OVERCENTRE

VBSO-SE-NBA-FCV

05.43.22 - X - Y - Z



DATI TECNICI / TECHNICAL DATA

Coppia di serraggio
Installation torque 70-80 Nm (max 80°)

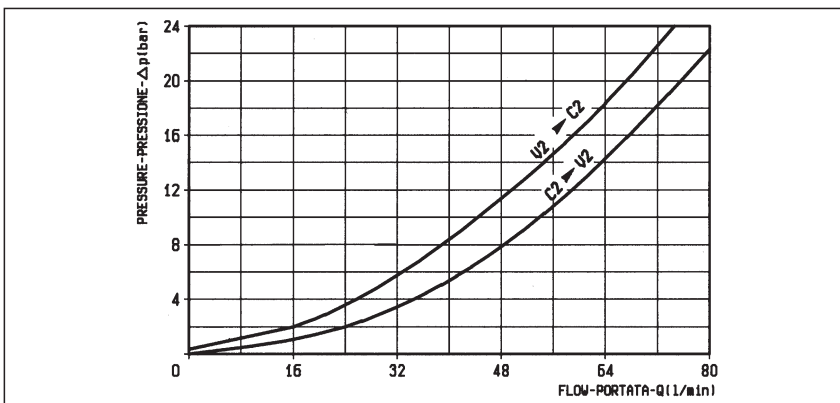
Pressione max.
Max. pressure 350 bar

Portata max.
Flow max. 70 l/min

Taratura della valvola: almeno 1.3 volte superiore
alla pressione indotta dal carico
Pressure setting: at least 1.3 times the load
induced pressure

Cappello per piombatura Codice/Ordering code
Sealing Cap 03.05.01.001

Peso
Weight 1.2 kg



| X | RAPPORTO DI PILOTAGGIO PILOT RATIO |
|----|---------------------------------------|
| 03 | 10.5 : 1 |
| 10 | 3 : 1 |

| Z | MOLLE / SPRINGS | | | | |
|----|---|---|---|-----------------------------------|------------------|
| | Campo taratura min - max bar Adj. press. range bar | Incremento press. bar / giro vite Press. increase bar / turn | Taratura standard bar (Q = 5 l/min) Std. setting bar (Q = 5 l/min) | Cod. ordinazione Ordering code | Colore Colour |
| 20 | 60-210 | 68 | 200 | 03.51.01.152 | verde green |
| 35 | 100-350 | 105 | 350 | 03.51.01.142 | giallo yellow |

| Y | ATTACCHI / PORT SIZE | |
|----|----------------------|-------|
| | V2-C2 | PIL-M |
| 03 | G 1/2 | G 1/4 |