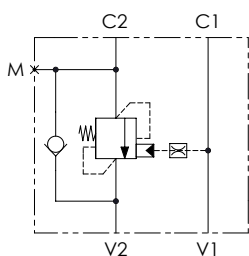


Schema idraulico - Hydraulic circuit



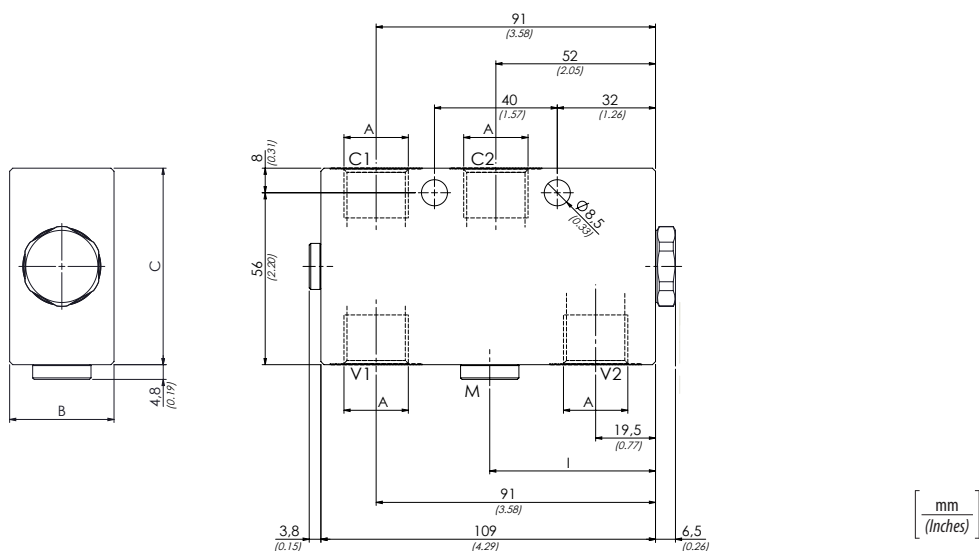
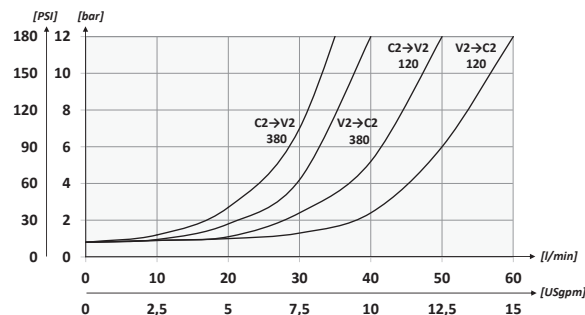
Codice ordinazione / Ordering code	01	02	03	04
	VBZP		2	

01	Valvole di bilanciamento singole per centro aperto a taratura fissa (Single counterbalance valves fixed setting for open center)	VBZP
02	Dimensione (Size)	BSP 1/4 140
		BSP 3/8 380
		BSP 1/2 120
05	Taratura (Setting) Q=5 l/min 350 bar (5075 PSI)	2
04	Materiale (Material)	Corpo in acciaio + zincatura (Steel body + zinc-plated) S
		Corpo in acciaio + zinco-nichel (Steel body + zinc-nickel) K
Rapporto di pilotaggio (Pilot ratio) 1:4.25		

Dati tecnici - Technical data

olio idraulico / Mineral oil	ISO 6743/4 (DIN 51524)	
Viscosità olio / Oil viscosity	15-250 mm ² /s (15 to 250 cSt)	
Classe di contaminazione max con filtro / Max contamination index with filter	ISO 4406:1999 Classe 19/17/14	
Temperatura dell'olio / Oil temperature	-20°C +80°C	-4°F + 176°F
Temperatura ambiente / Ambient temperature	-20°C +50°C	-4°F + 122°F
È indispensabile l'utilizzo di un filtro per proteggere la valvola (filtrazione consigliata 15 µm) It is necessary a filter use to protect the valve (advised filtration 15 µm)		

Performances



Caratteristiche tecniche - Technical characteristics

Tipo / Type	A	Portata max (l/min) / Max flow (USgpm)	Pressione max (bar) / Max pressure (PSI)	B	C	I	M	Peso approssimativo (kg) / Approx weight (lb)
VBZP380	BSP 3/8	40 (10.6)	350 (5075)	29 (1.14)	54 (2.13)	/	/	1,14 (2.50)
VBZP120	BSP 1/2	60 (15.9)		34 (1.34)	64 (2.52)	54 (2.13)	BSP 1/4	1,52 (3.34)