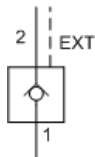


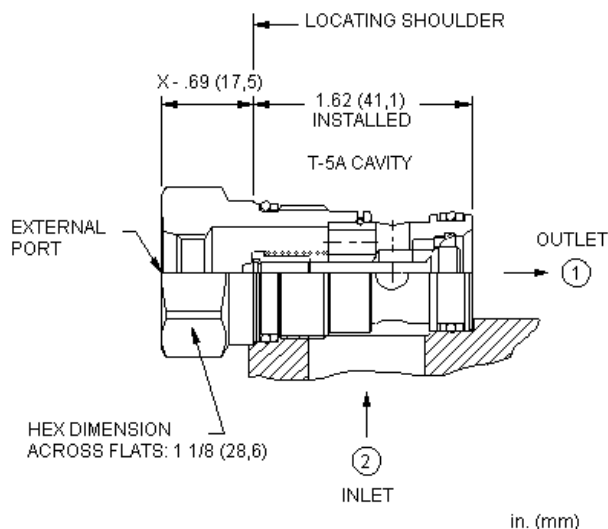
MODEL
CXEC

Free flow side to nose check valve with auxillary external port and Delrin seat
CAPACITY: 120 L/min. | CAVITY: T-5A



CONFIGURATION

| | | |
|----------|-------------------|---------------------|
| X | Control | External 6-SAE Port |
| C | Cracking Pressure | 30 psi (2 bar) |
| N | Seal Material | Buna-N |



Free-flow, side-to-nose check valves are on/off circuit components that allow free flow from the inlet (port 2) to the outlet (port 1) and block flow in the opposite direction.

TECHNICAL DATA

| | |
|---------------------------|--------------------|
| Cavity | T-5A |
| Series | 2 |
| Capacity | 120 L/min. |
| Valve Hex Size | 28,6 mm |
| Valve Installation Torque | 61 - 68 Nm |
| Seal kit - Cartridge | Buna: 990-203-007 |
| Seal kit - Cartridge | Viton: 990-203-006 |
| Model Weight | 0.15 kg. |

TECHNICAL FEATURES

- The Delrin seat is suitable for dirty, medium pressure systems that are not subjected to high flows or temperatures.
- Two-port check valves share the same cavity for a given frame size, however, pay close attention as flow paths may be in opposite directions.
- These check valves are considered circuit savers for existing circuits where manifold drillings are incorrect. The capacity of side-to-nose (port 2 to port 1) 2-port check valves is approximately 30% less than preferred models with a nose-to-side (port 1 to port 2) flow path.
- Check valves offer extremely low leakage rates with a maximum leakage of less than 1 drop per minute (0,07 cc/min).
- Will accept 5000 psi (350 bar) at ports 1 and 2.
- Incorporates the Sun floating style construction to minimize the possibility of internal parts binding due to excessive installation torque and/or cavity/cartridge machining variations.

CONFIGURATION OPTIONS

CONTROL

| | | |
|------------------|----------|---------------------|
| Standard Options | X | External 6-SAE Port |
|------------------|----------|---------------------|

CRACKING PRESSURE

| | |
|----------|-----------------|
| A | 4 psi (0,3 bar) |
|----------|-----------------|

| | | |
|-------------------------|----------|------------------|
| Standard Options | B | 15 psi (1 bar) |
| | C | 30 psi (2 bar) |
| | D | 50 psi (3,5 bar) |
| | E | 75 psi (5 bar) |
| | F | 100 psi (7 bar) |
| | Z | 1 psi (0,07 bar) |

SEAL MATERIAL

| | | |
|-------------------------|----------|--------|
| Standard Options | N | Buna-N |
| | V | Viton |

Copyright © 2002-2014 Sun Hydraulics Corporation. All rights reserved.