

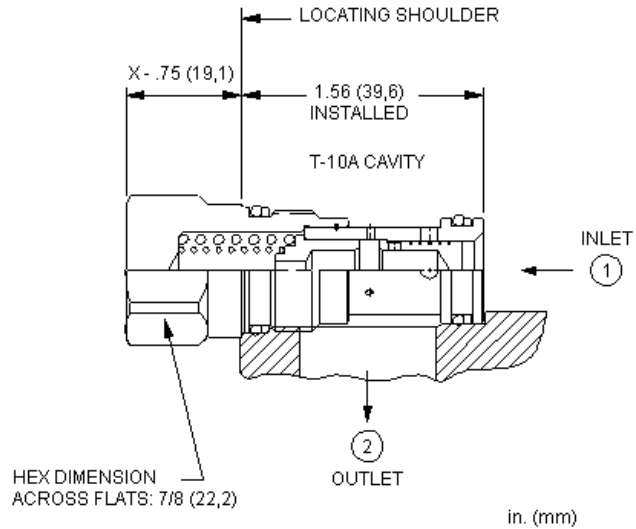
MODEL
CXDF

Piston type, hot oil check valve
CAPACITY: 40 L/min. | CAVITY: T-10A



CONFIGURATION

| | | |
|----------|-------------------|----------------|
| X | Control | Not Adjustable |
| E | Cracking Pressure | 75 psi (5 bar) |
| N | Seal Material | Buna-N |



This valve was designed to be used in a parts-in-body, hot oil shuttle assembly. 2 valves, nose to nose, with a pin in between created the low side shuttle.

TECHNICAL DATA

| | |
|---------------------------|---------------------------|
| Cavity | T-10A |
| Series | 1 |
| Capacity | 40 L/min. |
| Valve Hex Size | 22,2 mm |
| Valve Installation Torque | 41 - 47 Nm |
| Seal kit - Cartridge | Buna: 990-010-007 |
| Seal kit - Cartridge | Polyurethane: 990-010-002 |
| Seal kit - Cartridge | Viton: 990-010-006 |
| Model Weight | 0.10 kg. |

CONFIGURATION OPTIONS

CONTROL

| | | |
|------------------|---|----------------|
| Standard Options | X | Not Adjustable |
|------------------|---|----------------|

CRACKING PRESSURE

| | | |
|------------------|---|--------------------|
| Standard Options | E | 75 psi (5 bar) |
| | G | 150 psi (10,5 bar) |
| | H | 200 psi (14 bar) |

SEAL MATERIAL

| | | |
|------------------|---|--------|
| Standard Options | N | Buna-N |
| | V | Viton |

