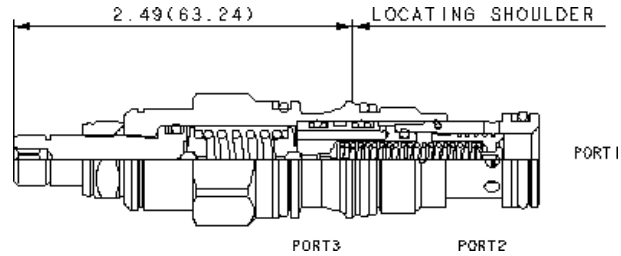
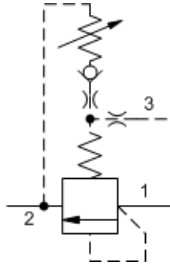


MODEL
RVCB-LAN

Normally closed modulating element valve with relief function
CAPACITY: 40 L/min. | **CAVITY:** T-11A



CONFIGURATION

L	Control	Standard Screw Adjustment
A	Adjustment Range	100 - 3000 psi (7 - 210 bar), 1000 psi (70 bar) Standard Setting
N	Seal Material	Buna-N
(none)	Material/Coating	Standard Material/Coating

Three-port normally closed modulating elements with relief provide two functions when combined with an external orifice. The mainstage is a bypass compensator that controls a priority flow into the circuit, determined by the external orifice. Input flow in excess of the priority flow is bypassed to tank (port 2). If the inlet (port 1) pressure rises to the valve setting, the valve operates as a normal relief valve.

TECHNICAL DATA

Cavity	T-11A
Series	1
Capacity	40 L/min.
Factory Pressure Settings Established at	15 L/min.
Maximum Operating Pressure	350 bar
Response Time - Typical	10 ms
Maximum Valve Leakage at 110 SUS (24 cSt)	30 cc/min.@70 bar
Adjustment - Number of Clockwise Turns to Increase Setting	5
Valve Hex Size	22,2 mm
Valve Installation Torque	41 - 47 Nm
Adjustment Screw Internal Hex Size	4 mm
Adjustment Locknut/Cap Hex Size	15 mm
Adjustment Nut Torque	9 - 10 Nm
Seal kit - Cartridge	Buna: 990-011-007
Seal kit - Cartridge	Polyurethane: 990-011-002
Seal kit - Cartridge	Viton: 990-011-006

SYMBOLS

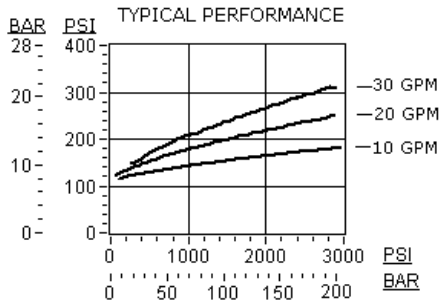


TECHNICAL FEATURES

- Compensating pressure for the A range is 45 psi (3 bar), for the B range 30 psi (2 bar), and for the C range 100 psi (7 bar).

- Explanation of the performance curve: The X axis is system pressure. The Y axis shows the pressure differential that the valve creates across the control orifice. The curves represent various bypass flows (pump flow minus control flow). The capacity and performance of this valve is determined by the bypass flow, control flow is not a factor.

PERFORMANCE CURVES



CONFIGURATION OPTIONS

CONTROL

Standard Options	C	Tamper Resistant - Factory Set
	K	Handknob
	L	Standard Screw Adjustment

ADJUSTMENT RANGE

Standard Options	A	100 - 3000 psi (7 - 210 bar), 1000 psi (70 bar) Standard Setting
	B	50 - 1500 psi (3,5 - 105 bar), 1000 psi (70 bar) Standard Setting
	C	150 - 6000 psi (10,5 - 420 bar), 1000 psi (70 bar) Standard Setting

SEAL MATERIAL

Standard Options	N	Buna-N
	V	Viton

MATERIAL/COATING

Standard Options		Standard Material/Coating
	/AP	Stainless Steel, Passivated