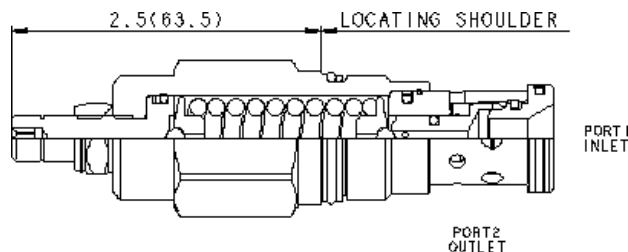
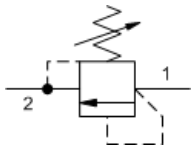


**MODEL**  
RDFA-LAN

**Direct-acting relief valve**  
**CAPACITY:** 200 L/min. | **CAVITY:** T-3A



## CONFIGURATION

<b>L</b>	Control	Standard Screw Adjustment
<b>A</b>	Adjustment Range	500 - 3000 psi (35 - 210 bar), 1000 psi (70 bar) Standard Setting
<b>N</b>	Seal Material	Buna-N
<b>(none)</b>	Material/Coating	Standard Material/Coating

## NOTES

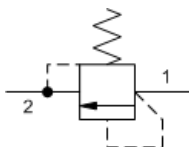
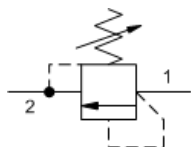
U.S. Patent #4,742,846; European Patent Pending

Direct-acting relief cartridges are normally closed, pressure-limiting valves used to protect hydraulic components from pressure transients. When the pressure at the inlet (port 1) reaches the valve setting, the valve starts to open to tank (port 2), throttling flow to limit the pressure rise. These valves are smooth and quiet, essentially zero leak, dirt tolerant, immune to silting and are very fast.

## TECHNICAL DATA

Cavity	T-3A
Series	2
Capacity	200 L/min.
Factory Pressure Settings Established at	15 L/min.
Maximum Operating Pressure	350 bar
Response Time - Typical	2 ms
Maximum Valve Leakage at Reseat	0,7 cc/min.
Reseat	>90% of setting
Adjustment - Number of Clockwise Turns to Increase Setting	5
Valve Hex Size	28,6 mm
Valve Installation Torque	61 - 68 Nm
Adjustment Screw Internal Hex Size	4 mm
Adjustment Locknut/Cap Hex Size	15 mm
Adjustment Nut Torque	9 - 10 Nm
Seal kit - Cartridge	Buna: 990-303-007
Seal kit - Cartridge	Polyurethane: 990-303-002
Seal kit - Cartridge	Viton: 990-303-006

## SYMBOLS

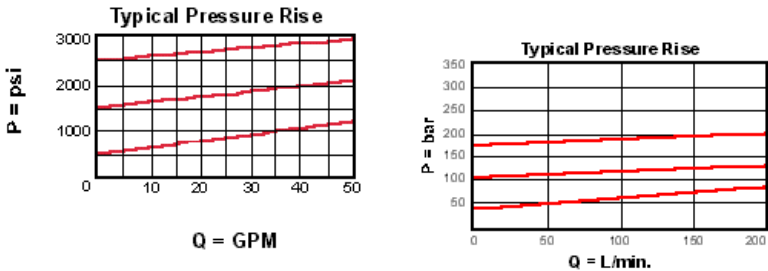


## TECHNICAL FEATURES

- Will accept maximum pressure at port 2; suitable for use in cross port relief circuits.
- The seals on the adjust screw are exposed to system pressure which means this valve can only be adjusted when the pressure is removed. The setting procedure is; check the setting, remove the pressure, adjust the valve, check the new setting.
- Valve is relatively insensitive to varying oil temperatures and oil borne contamination.

- Select a spring range where the desired relief setting is approximately mid-range to high between the minimum and maximum pressure to ensure maximum valve repeatability.
- Suitable for use in load holding applications.
- Back pressure on the tank port (port 2) is directly additive to the valve setting at a 1:1 ratio.
- All 2-port relief cartridges (except pilot reliefs) are physically and functionally interchangeable (same flow path, same cavity for a given frame size).
- Incorporates the Sun floating style construction to minimize the possibility of internal parts binding due to excessive installation torque and/or cavity/cartridge machining variations.

## PERFORMANCE CURVES



## CONFIGURATION OPTIONS

CONTROL		
Preferred Options	L	Standard Screw Adjustment
Standard Options	C	Tamper Resistant - Factory Set
	Q	Capped and Lockwired
ADJUSTMENT RANGE		
Preferred Options	A	500 - 3000 psi (35 - 210 bar), 1000 psi (70 bar) Standard Setting
	W	800 - 4500 psi (55 - 315 bar), 1000 psi (70 bar) Standard Setting
Standard Options	B	300 - 1500 psi (20 - 105 bar), 1000 psi (70 bar) Standard Setting
	C	1000 - 6000 psi (70 - 420 bar), 1000 psi (70 bar) Standard Setting
	D	200 - 800 psi (14 - 55 bar), 400 psi (28 bar) Standard Setting
	E	100 - 400 psi (7 - 28 bar), 200 psi (14 bar) Standard Setting
	S	50 - 200 psi (3,5 - 14 bar), 100 psi (7 bar) Standard Setting
SEAL MATERIAL		
Preferred Options	N	Buna-N
Standard Options	V	Viton
MATERIAL/COATING		
Standard Options		Standard Material/Coating
	/AP	Stainless Steel, Passivated
	/LH	Mild Steel, Zinc-Nickel

## RELATED MODELS

[RDFA3](#)  
Non-adjustable direct-acting relief valve