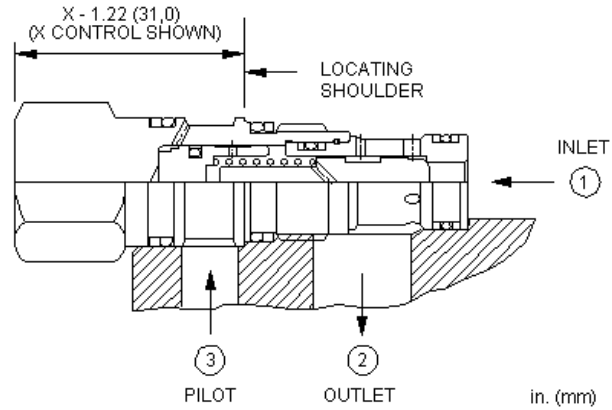
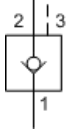


MODEL
COBA

Pilot-to-close check valve
CAPACITY: 40 L/min. | CAVITY: T-163A



CONFIGURATION

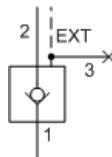
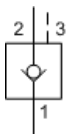
X	Control	Standard Pilot
C	Cracking Pressure	30 psi (2 bar)
N	Seal Material	Buna-N

This valve is a spring biased closed, pilot-to-close check cartridge that has a 3:1 pilot ratio. The valve allows flow from port 1 to port 2 and blocks reverse flow. Pressure at the pilot port opposes pressure at port 1 at a ratio of 3:1. This valve is most often used in regeneration circuits.

TECHNICAL DATA

Cavity	T-163A
Series	0
Capacity	40 L/min.
Pilot Ratio	3:1
Maximum Operating Pressure	350 bar
Maximum Valve Leakage at 110 SUS (24 cSt)	0,07 cc/min.
Valve Hex Size	19,1 mm
Valve Installation Torque	27 - 34 Nm
Seal kit - Cartridge	Buna: 990-163-007
Seal kit - Cartridge	Polyurethane: 990-163-002
Seal kit - Cartridge	Viton: 990-163-006
Model Weight	0.09 kg.

SYMBOLS

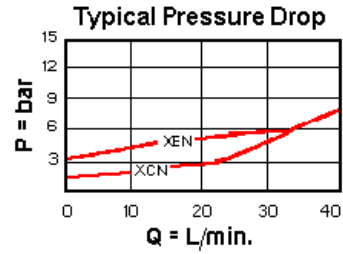
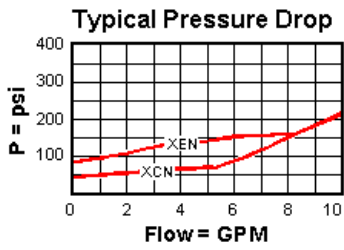


TECHNICAL FEATURES

- Features hardened steel seats for excellent wear characteristics and contamination tolerance.
- Product is not available with A and B spring ranges (4 and 15 psi (0,3 and 1 bar)).
- Pressure at the port 2 area directly opposes pilot pressure.
- Reverse flow through the valve from port 2 to port 1 is not possible under any condition.
- Nominal pilot ratio is 3:1. This means that a pressure of 1000 psi (70 bar) at the pilot port will close a valve against a pressure of 3000 psi (205 bar) at port 1. Any decay or loss of pilot pressure could allow the valve to open, even if it is a momentary decay or loss.

- Incorporates the Sun floating style construction to minimize the possibility of internal parts binding due to excessive installation torque and/or cavity/cartridge machining variations.

PERFORMANCE CURVES



CONFIGURATION OPTIONS

CONTROL

Standard Options	B	External 1/4 BSPP Pilot Port, Port 3 blocked
	X	Standard Pilot

CRACKING PRESSURE

Standard Options	C	30 psi (2 bar)
	D	50 psi (3,5 bar)
	E	75 psi (5 bar)
	F	100 psi (7 bar)

SEAL MATERIAL

Standard Options	N	Buna-N
	V	Viton

Copyright © 2002-2014 Sun Hydraulics Corporation. All rights reserved.