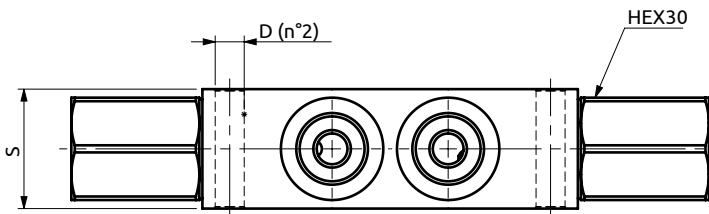
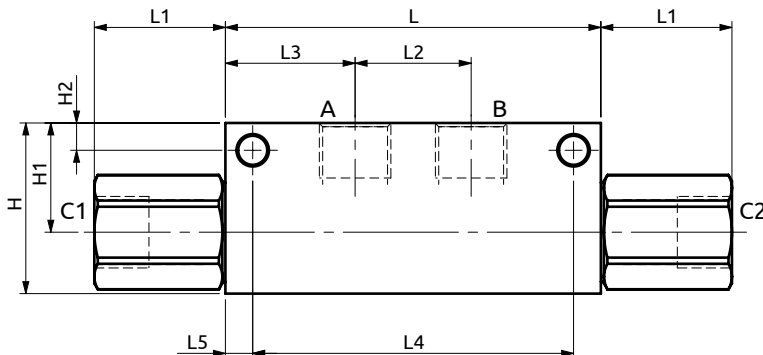
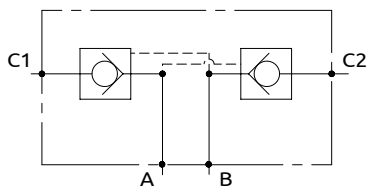
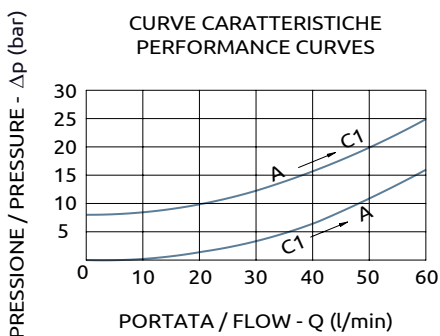




Valvola di blocco doppia
Dual check valves

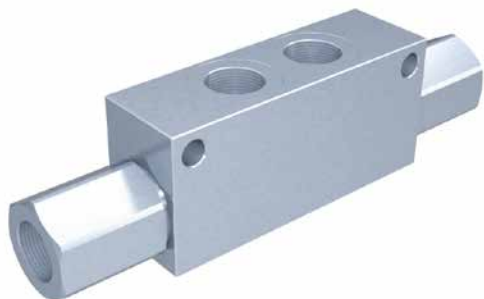


CURVE CARATTERISTICHE
PERFORMANCE CURVES



Corpo in acciaio / Steel body

A050453.03.00	110	38.5	34	38	94	8	35	50	32	8	Ø8.5
COD.	L	L1	L2	L3	L4	L5	S	H	H1	H2	D



DESCRIZIONE	DESCRIPTION
Valvola di blocco doppia con otturatore a ventole apertura ON-OFF con uscite C1 e C2 in linea.	Dual check valves poppet type with ON-OFF opening, outlet C1 and C2 in line.

Codice Ordine	Rapporto di Pilotaggio	Portata Massima	Pressione Max	Pressione di inizio apertura	Dimensione Porte	Peso
Ordering Code	Pilot Ratio	Max Flow	Max Pressure	Cracking Pressure	Port Size	Weight
A050453.03.00	3.4:1	60 l/min	400 bar	8 bar	1/2"G	2.1 kg