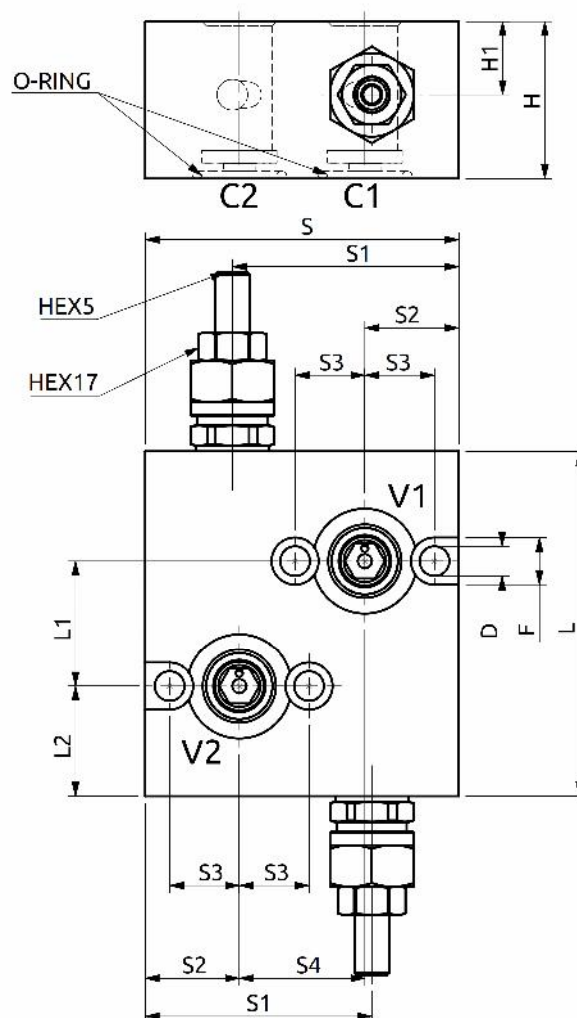
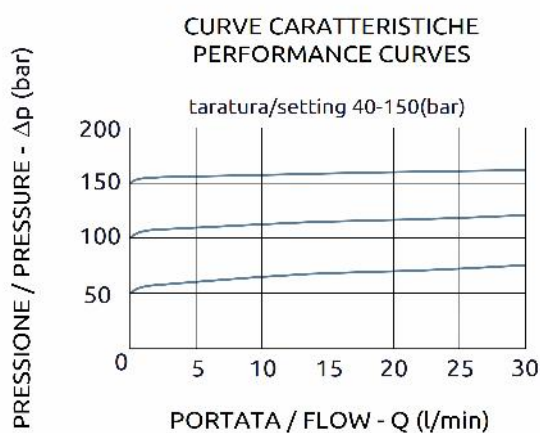
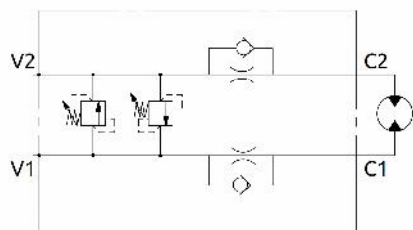




Valvola limitatrice di pressione flangiabile doppia incrociata

Flangeable dual cross over relief valve



Corpo in alluminio / Aluminium body

| | | | | | | | | | | | | | |
|---------------|----|----|------|----|----|----|----|----|----|----|------|------|----------------|
| B016004.03.00 | 99 | 36 | 31.5 | 90 | 65 | 27 | 20 | 36 | 45 | 21 | 13.5 | Ø8.5 | OR Ø22.22x2.62 |
| COD. | L | L1 | L2 | S | S1 | S2 | S3 | S4 | H | H1 | F | D | O-RING |



| DESCRIZIONE | DESCRIPTION |
|---|---|
| Valvola limitatrice di pressione con tenuta a cono, con funzione di protezione del circuito da sovrappressioni. Flangiata per motori DANFOSS OMR. | Relief valve in compact aluminium construction poppet type, for overload protection. Flangeable for DANFOSS motors OMR. |

| CODICE ORDINAZIONE PIOMBATURA | SEALING ORDERING CODE |
|-------------------------------|-----------------------|
| 916005 | |

| Codice Ordinazione | Campo di Taratura | Taratura Standard | Incremento per giro | Portata Massima | Pressione Max | Dimensione Porte | Peso |
|--------------------|-------------------|-------------------|---------------------|-----------------|---------------|-------------------------------|--------|
| Ordering Code | Pressure Range | Standard Setting | Pressure Increase | Max Flow | Max Pressure | Port Size | Weight |
| B016004.03.00 | 40-150 bar | 50 bar | 25 bar/turn | 30 l/min | 250 bar | V1-V2 C1-C2 1/2"G Ø9 | 0.7 kg |