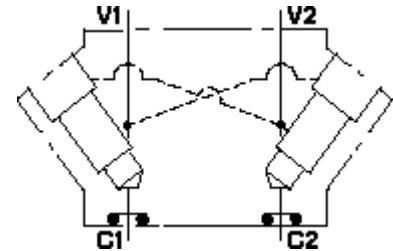


Functional Group:

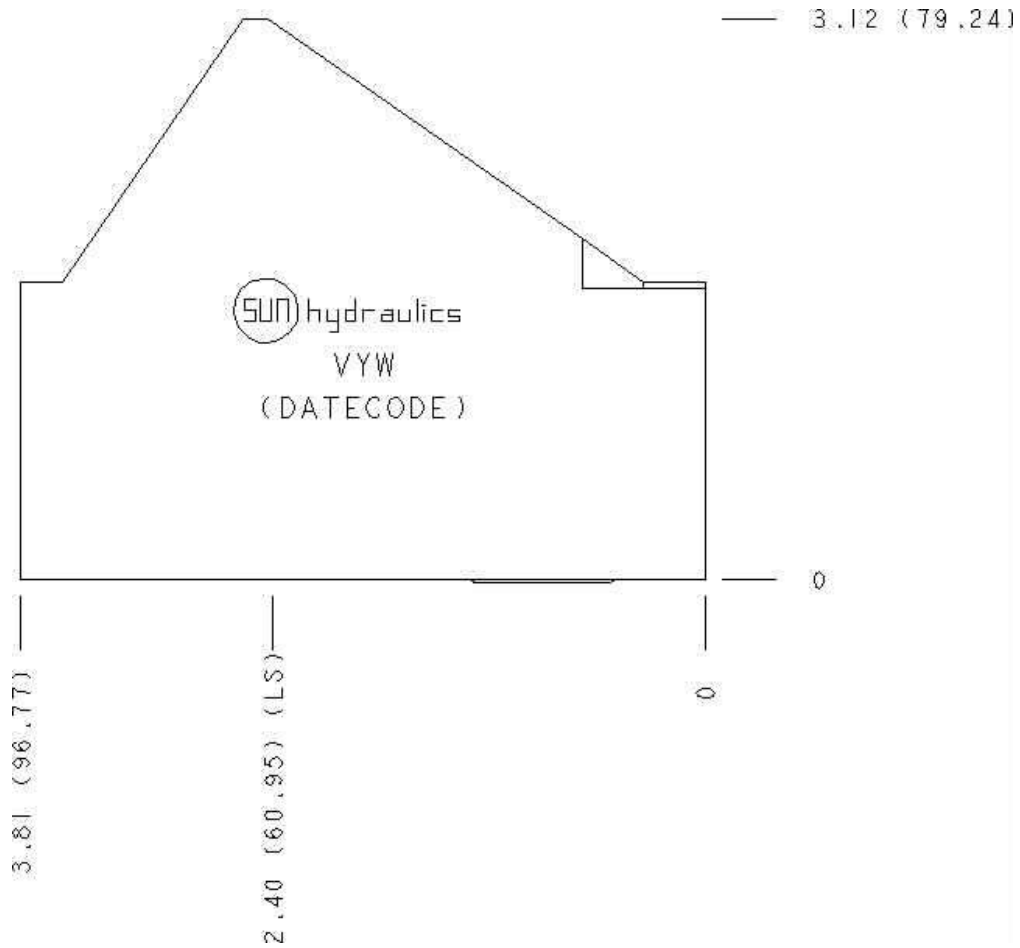
Products : Manifolds : Line Mount : Counterbalance : 3 Port : Cross pilot with 2 gasket ports

Model:

VYW



Face: 10



Port Headings and Sizes

VYW Ports V1 & V2 3/4" BSPP

Technical Data

	U.S. Units	Metric Units

Cavity	T-2A	
Body Features	Direct mount, cross pilot, 2 gasket ports	
Body Type	Line mount	
Interface	Sun	
Open Cavity Quantity	2	
Mounting Hole Diameter	.41 in.	10,4 mm
Mounting Hole Depth	Through	
Mounting Hole C'bore Diameter	.59 in.	15,0 mm
Mounting Hole Quantity	3	
Model Weight	2.17 lb.	0.98 kg.

Option Selection

U.S. Dollar 

Aluminum Body Pressure Rating: **3000 psi (210 bar)**
 Ductile Iron Body Pressure Rating: **5000 psi (350 bar)**

Model Code	Description
VYW	Aluminum, Buna-N, U.S. Units
VYW/S	Ductile Iron, Buna-N, U.S. Units
VYW/V	Aluminum, Viton, U.S. Units
VYW/Y	Ductile Iron, Viton, U.S. Units

Display Components

Part	Description	Quantity
500-001-114	O-Ring	2

Special Notes

- **Important:** Please carefully consider the maximum system pressure to which the manifold will be exposed. The pressure rating of the manifold is dependent on the manifold material, with the port type and sizing a secondary consideration. For example, manifolds constructed of aluminum are not rated for system pressures higher than 3000 psi (210 bar), regardless of the port type and size specified.