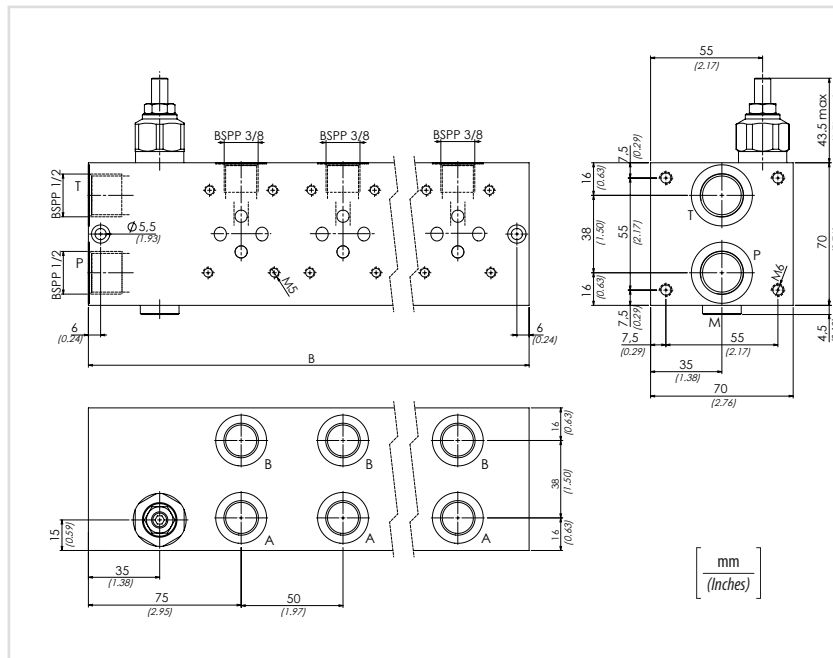
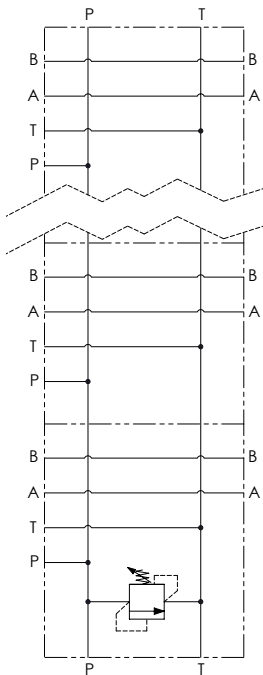




**Schema idraulico**  
Hydraulic circuit



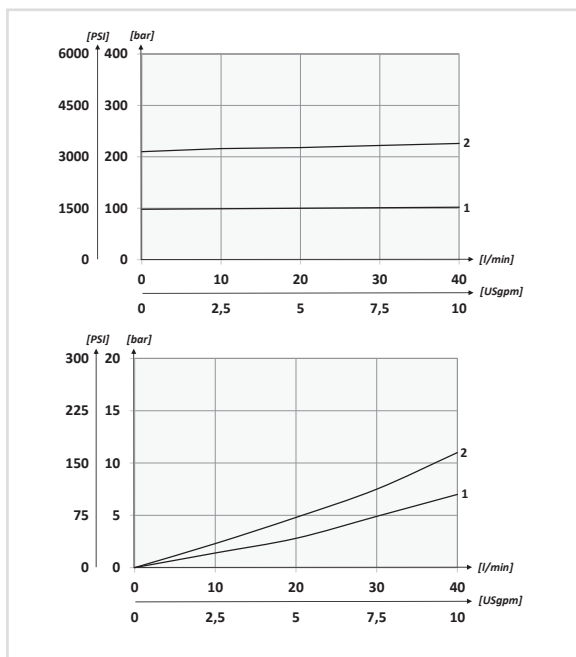
**Attacchi - Pressure drops**

P-T	BSPP 1/2
M	BSPP 1/4
A-B	BSPP 3/8

Il blocco in alluminio può essere utilizzato per pressioni fino a 210 bar (3045 PSI)

Aluminium manifold can be used for pressures up to 210 bar (3045 PSI)

**Performances**



**Dati tecnici - Technical data**

<b>Olio idraulico/Mineral oil</b>	ISO 6743/4 (DIN 51524)
<b>Viscosità olio/Oil viscosity</b>	15-250 mm <sup>2</sup> /s (15 to 250 cSt)
<b>Classe di contaminazione max con filtro</b> Max contamination index with filter	ISO 4406:1999 Classe 19/17/14
<b>Temperatura dell'olio/Oil temperature</b>	-20°C +80°C    -4°F + 176°F
<b>Temperatura ambiente/Ambient temperature</b>	-20°C +50°C    -4°F + 122°F
<b>È indispensabile l'utilizzo di un filtro per proteggere la valvola (filtrazione consigliata 15 µm)</b> It is necessary a filter use to protect the valve (advised filtration 15 µm)	

**Caratteristiche tecniche - Technical characteristics**

Tipo Type	N. di stazioni N. of stations	B	Portata max Max flow l/min-USgpm	Pressione max Max pressure bar/PSI	Peso approssimativo Approx weight kg/lb	Tipo di valvola Type of valve
<b>BM2-RV</b>	<b>2</b>	<b>160 (6.30)</b>	<b>40 (10.6)</b>	<b>210 (3045)</b>	<b>2,1 (4.6)</b>	<b>VMD40S</b>
<b>BM3-RV</b>	<b>3</b>	<b>210 (8.27)</b>			<b>2,7 (6)</b>	
<b>BM4-RV</b>	<b>4</b>	<b>260 (10.24)</b>			<b>3,3 (7.3)</b>	
<b>BM5-RV</b>	<b>5</b>	<b>310 (12.20)</b>			<b>3,9 (8.6)</b>	
<b>BM6-RV</b>	<b>6</b>	<b>360 (14.17)</b>			<b>4,5 (10)</b>	