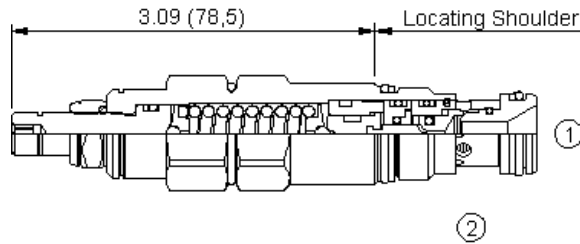
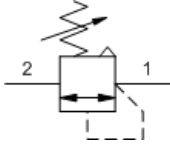


MODEL
SXCB

Atmospherically referenced, direct-acting sequence valve without reverse flow check
CAPACITY: 60 L/min. | CAVITY: T-13A



CONFIGURATION

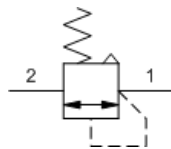
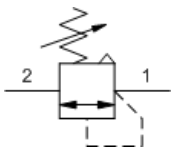
L	Control	Standard Screw Adjustment
A	Adjustment Range	500 - 3000 psi (35 - 210 bar), 1000 psi (70 bar) Standard Setting
N	Seal Material	Buna-N
(none)	Material/Coating	Standard Material/Coating

Atmospherically referenced, direct-acting sequence valves will supply a secondary circuit with flow once the pressure at the inlet (port 1) has exceeded the valve setting. The pressure setting of this sequence valve controls the pressure at port 1 relative to the atmospheric vent.

TECHNICAL DATA

Cavity	T-13A
Series	1
Capacity	60 L/min.
Factory Pressure Settings Established at	30 cc/min.
Maximum Operating Pressure	350 bar
Response Time - Typical	2 ms
Maximum Valve Leakage at Reseat	0,7 cc/min.
Adjustment - Number of Clockwise Turns to Increase Setting	4
Valve Hex Size	22,2 mm
Valve Installation Torque	41 - 47 Nm
Adjustment Screw Internal Hex Size	4 mm
Locknut Hex Size	15 mm
Locknut Torque	9 - 10 Nm
Seal kit - Cartridge	Buna: 990-010-007
Seal kit - Cartridge	Polyurethane: 990-010-002
Seal kit - Cartridge	Viton: 990-010-006
Model Weight	0.21 kg.

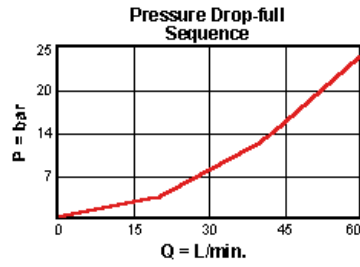
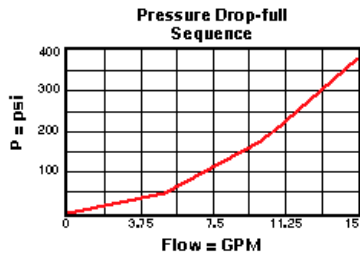
SYMBOLS



TECHNICAL FEATURES

- Suitable for use in load holding applications.
- Atmospherically referenced valves should only be used where it is impossible have a drain connection. Over time, the atmospherically referenced valves may leak externally or allow moisture into the spring chamber.
- Approximately 1 drop (0,07 cc) of fluid will pass into the vented spring chamber every 4000 cycles.
- Incorporates the Sun floating style construction to minimize the possibility of internal parts binding due to excessive installation torque and/or cavity/cartridge machining variations.

PERFORMANCE CURVES



CONFIGURATION OPTIONS

CONTROL

Standard Options	C	Tamper Resistant - Factory Set
	K	Handknob
	L	Standard Screw Adjustment

ADJUSTMENT RANGE

Standard Options	A	500 - 3000 psi (35 - 210 bar), 1000 psi (70 bar) Standard Setting
	B	300 - 1500 psi (20 - 105 bar), 1000 psi (70 bar) Standard Setting
	C	2000 - 6000 psi (140 - 420 bar), 2000 psi (140 bar) Standard Setting
	D	200 - 800 psi (14 - 55 bar), 400 psi (28 bar) Standard Setting
	E	100 - 400 psi (7 - 28 bar), 200 psi (14 bar) Standard Setting
	W	800 - 4500 psi (55 - 315 bar), 1000 psi (70 bar) Standard Setting

SEAL MATERIAL

Standard Options	N	Buna-N
	V	Viton

MATERIAL/COATING

Standard Options		Standard Material/Coating
	/AP	Stainless Steel, Passivated

Copyright © 2002-2014 Sun Hydraulics Corporation. All rights reserved.