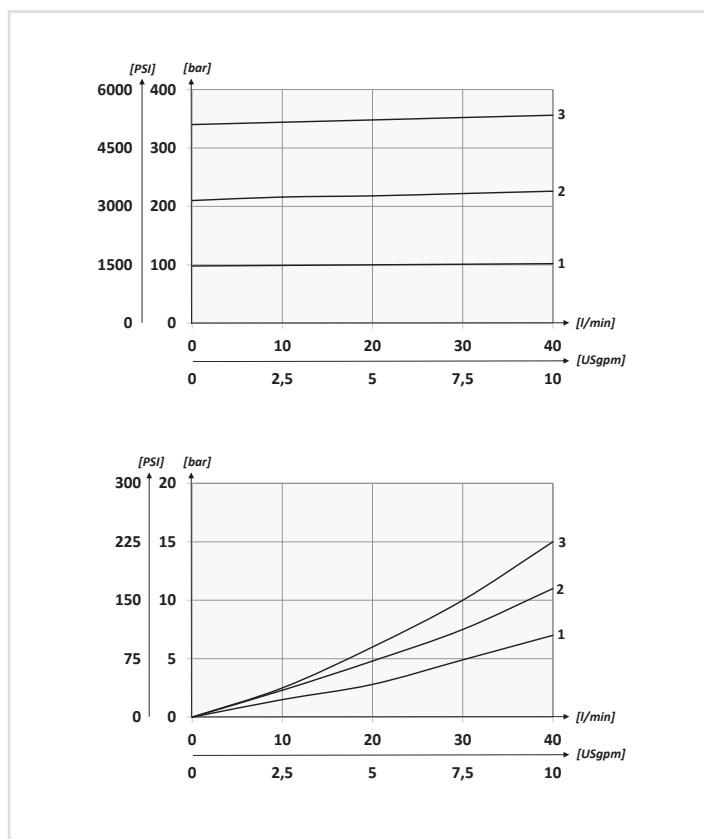


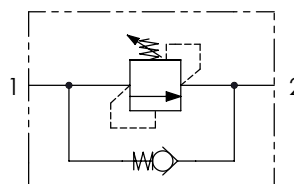
Performances



| | | | |
|---|------------|----|----|
| | 01 | 02 | 03 |
| Codice ordinazione Ordering code | VSL | | |

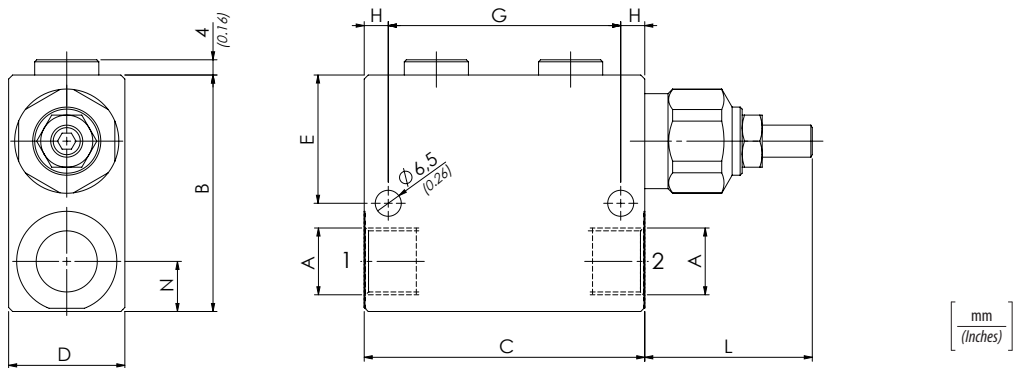
| 01 | Valvole di sequenza dirette (In-line direct sequence valves) | | VSL |
|----|--|--|-------------------|
| 02 | Dimensione (Size) | BSPP 1/4 | 140 |
| | | BSPP 3/8 | 380 |
| | | BSPP 1/2 | 120 |
| 03 | Molla (Spring) 20/110 bar (290/1595 PSI) max | Incremento pressione al giro (Press. increase) 35 bar/al giro (508 PSI/turn) | BSPP 1/4 |
| | Molla (Spring) 10/90 bar (145/1305 PSI) max | Incremento pressione al giro (Press. increase) 12 bar/al giro (174 PSI/turn) | BSPP 3/8-BSPP 1/2 |
| | Molla (Spring) 30/210 bar (435/3045 PSI) max | Incremento pressione al giro (Press. increase) 62 bar/al giro (899 PSI/turn) | BSPP 1/4 |
| | Molla (Spring) 20/210 bar (290/3045 PSI) max | Incremento pressione al giro (Press. increase) 30 bar/al giro (435 PSI/turn) | BSPP 3/8-BSPP 1/2 |
| | Molla (Spring) 40/350 bar (580/5075 PSI) max | Incremento pressione al giro (Press. increase) 120 bar/al giro (1740 PSI/turn) | BSPP 1/4 |
| | Molla (Spring) 70/350 bar (1015/5075 PSI) max | Incremento pressione al giro (Press. increase) 65 bar/al giro (943 PSI/turn) | BSPP 3/8-BSPP 1/2 |

Schema idraulico - Hydraulic circuit



Dati tecnici - Technical data

| | | |
|---|---|--------------|
| Olio idraulico/Mineral oil | ISO 6743/4 (DIN 51524) | |
| Viscosità olio/Oil viscosity | 15-250 mm ² /s (15 to 250 cSt) | |
| Classe di contaminazione max con filtro Max contamination index with filter | ISO 4406:1999 Classe 19/17/14 | |
| Temperatura dell'olio/Oil temperature | -20°C +80°C | -4°F + 176°F |
| Temperatura ambiente/Ambient temperature | -20°C +50°C | -4°F + 122°F |
| È indispensabile l'utilizzo di un filtro per proteggere la valvola (filtrazione consigliata 15 µm) It is necessary a filter use to protect the valve (advised filtration 15 µm) | | |



Caratteristiche tecniche - Technical characteristics

| Tipo Type | A | Portata max (l/min) Max flow (USgpm) | Pressione max (bar) Max pressure (PSI) | B | C | D | E | G | L | N | H | P | Peso approssimativo (kg) Approx weight (lb) | |
|---------------|-----------------|---|---|------------------|------------------|------------------|--------------------|------------------|------------------|------------------|------------------|-------------------|--|--------------------|
| VSL140 | BSPP 1/4 | 20 (5.3) | 350 (5075) | 60 (2.36) | 60 (0.98) | 25 (0.98) | 35.5 (1.40) | 49 (1.93) | 53 (2.09) | 12 (0.47) | 20 (0.79) | 5.5 (0.22) | 0.72 (1.58) | |
| VSL380 | BSPP 3/8 | 40 (10.6) | | | 70 (2.76) | 30 (1.18) | 32.5 (1.28) | 58 (2.28) | 43 (1.69) | 13 (0.51) | 17 (0.67) | 17 (0.67) | 6.5 (0.26) | 0.89 (1.96) |
| VSL120 | BSPP 1/2 | | | | 70 (2.76) | 35 (1.38) | 35 (1.38) | 17 (0.67) | 1 (2.21) | | | | | |