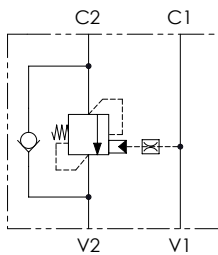




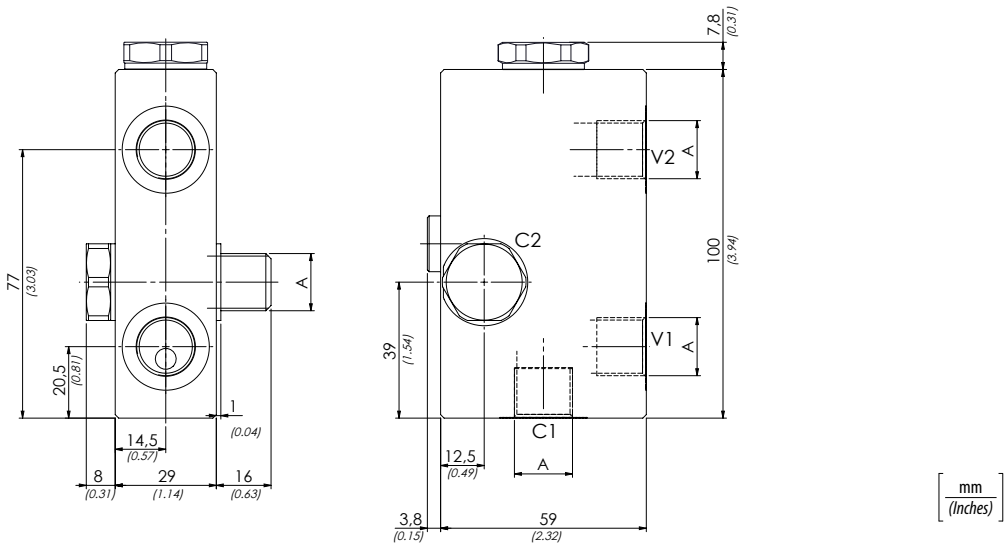
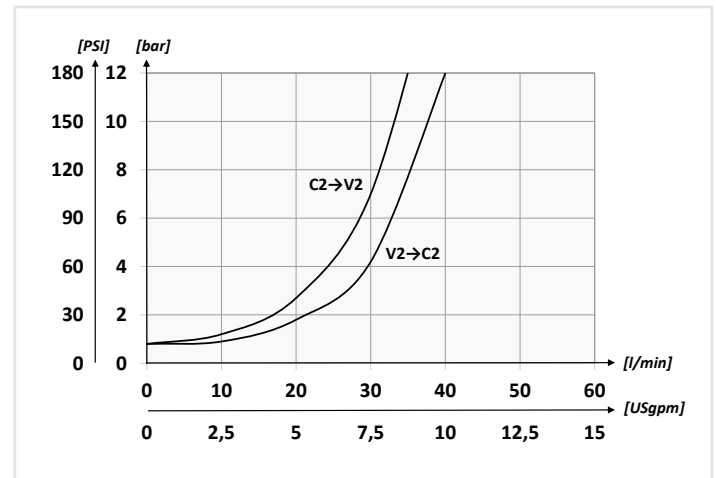
	01	02	03	04
<b>Codice ordinazione</b> <b>Ordering code</b>	<b>VBZB</b>	<b>380</b>	<b>2</b>	

<b>01</b>	Valvole di bilanciamento a bullone singola per centro aperto a taratura fissa (Bolt-fitting single counterbalance valves fixed setting for open center)	<b>VBZB</b>
<b>02</b>	Dimensione (Size)	BSPP 3/8 <b>380</b>
<b>03</b>	Taratura (Setting) <b>Q=5 l/min 350 bar (5075 PSI)</b>	<b>2</b>
<b>04</b>	Materiale (Material)	Corpo in acciaio + zincatura (Steel body + zinc-plated) <b>S</b>
		Corpo in acciaio + zinco-nichel (Steel body + zinc-nickel) <b>K</b>
Rapporto di pilotaggio (Pilot ratio) 1:4.25		

### Schema idraulico - Hydraulic circuit



### Performances



### Dati tecnici - Technical data

<b>Olio idraulico/Mineral oil</b>	<b>ISO 6743/4 (DIN 51524)</b>
<b>Viscosità olio/Oil viscosity</b>	<b>15-250 mm<sup>2</sup>/s (15 to 250 cSt)</b>
<b>Classe di contaminazione max con filtro</b> Max contamination index with filter	<b>ISO 4406:1999 Classe 19/17/14</b>
<b>Temperatura dell'olio/Oil temperature</b>	<b>-20°C +80°C      -4°F + 176°F</b>
<b>Temperatura ambiente/Ambient temperature</b>	<b>-20°C +50°C      -4°F + 122°F</b>
<b>È indispensabile l'utilizzo di un filtro per proteggere la valvola (filtrazione consigliata 15 µm)</b> It is necessary a filter use to protect the valve (advised filtration 15 µm)	

### Caratteristiche tecniche - Technical characteristics

Tipo Type	A	Portata max Max flow l/min-USgpm	Pressione max Max pressure bar/PSI	Peso approssimativo Approx weight kg/lb
<b>VBZB380</b>	<b>BSPP 3/8</b>	<b>40 (10.6)</b>	<b>350 (5075)</b>	<b>1,24 (2,73)</b>