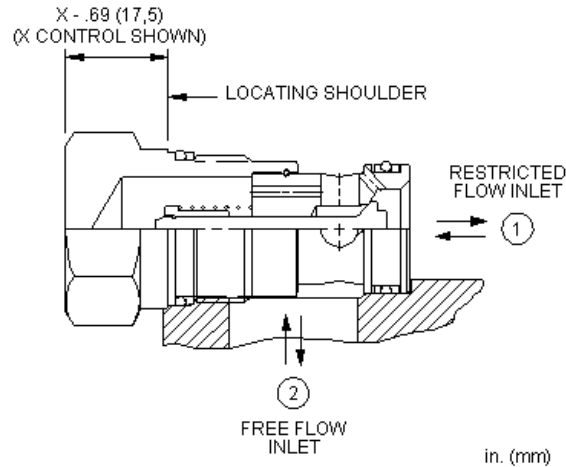
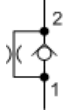


MODEL
CNEC

Fixed orifice, non-pressure compensated, flow control valve with reverse flow check
CAPACITY: 120 L/min. | CAVITY: T-5A



CONFIGURATION

X	Control	Not Adjustable
C	Setting Range	30 psi (2 bar) Cracking Pressure, .016 - .135 in. (0,4 - 3,4 mm)
N	Seal Material	Buna-N

This valve is a fixed orifice, non-pressure compensated flow control with a reverse flow check. The flow setting is specified by the user and is set at the factory.

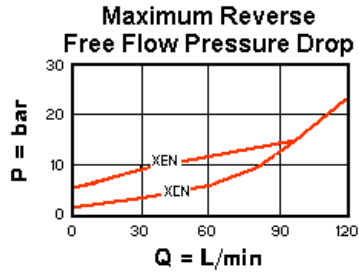
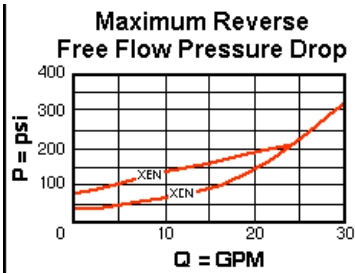
TECHNICAL DATA

Cavity	T-5A
Series	2
Capacity	120 L/min.
Maximum Operating Pressure	350 bar
Orifice Range	0,4 - 3,4 mm
Valve Hex Size	28,6 mm
Valve Installation Torque	61 - 68 Nm
Seal kit - Cartridge	Buna: 990-203-007
Seal kit - Cartridge	Viton: 990-203-006
Model Weight	0.17 kg.

TECHNICAL FEATURES

- Customer must specify the orifice diameter.
- All 2-port flow control cartridges are physically and functionally interchangeable (i.e. same flow path, same cavity for a given frame size). However, cartridge extension dimensions from the mounting surface may vary.
- These are essentially check valves with bypass orifices. The flow path matches Sun's flow controls and can be used in any flow control manifolds. Valves with the opposite direction of flow can be found under check valves with bypass orifices.
- Because these valves are non-compensating devices, the fixed orifice size will regulate flow through the valve in proportion to the square root of the pressure differential across ports 1 and 2.
- The customer specified orifice diameter is stamped on one of the cartridge's hex faces.
- Incorporates the Sun floating style construction to minimize the possibility of internal parts binding due to excessive installation torque and/or cavity/cartridge machining variations.

PERFORMANCE CURVES



CONFIGURATION OPTIONS

CONTROL

Standard Options X Not Adjustable

SETTING RANGE

Standard Options

A	4 psi (0,3 bar) Cracking Pressure, .016 - .135 in. (0,4 - 3,4 mm)
B	15 psi (1 bar) Cracking Pressure, .016 - .135 in. (0,4 - 3,4 mm)
C	30 psi (2 bar) Cracking Pressure, .016 - .135 in. (0,4 - 3,4 mm)
D	50 psi (3,5 bar) Cracking Pressure, .016 - .135 in. (0,4 - 3,4 mm)
E	75 psi (5 bar) Cracking Pressure, .016 - .135 in. (0,4 - 3,4 mm)
F	100 psi (7 bar) Cracking Pressure, .016 - .135 in. (0,4 - 3,4 mm)

SEAL MATERIAL

Standard Options

N	Buna-N
V	Viton

Copyright © 2002-2014 Sun Hydraulics Corporation. All rights reserved.