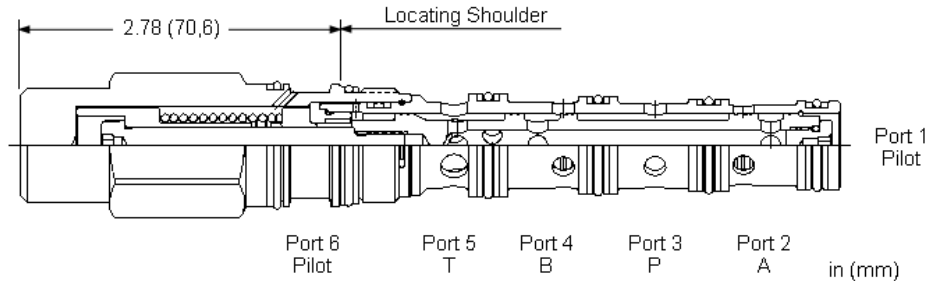
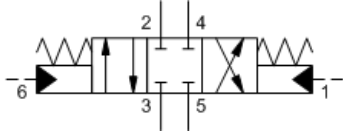


MODEL
DDDC

4-way, 3-position, pilot-to-shift directional valve
CAPACITY: 80 L/min. | CAVITY: T-52A



CONFIGURATION

X	Control	Not Adjustable
C	Spool Configuration	Blocked Center
N	Seal Material	Buna-N
(none)	Material/Coating	Standard Material/Coating

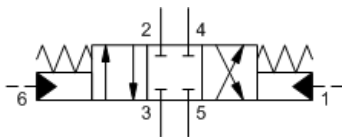
Three-position, 4-way directional cartridges are spring-centered, 6-port directional valves that can be configured from a choice of spool options. The supply port is port 3 and all ports will accept 5000 psi (350 bar). Capacity for these pilot-to-shift valves is dependent on the spool type specified.

TECHNICAL DATA

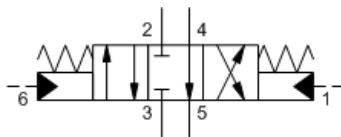
Cavity	T-52A
Series	2
Capacity	80 L/min.
Minimum Pilot Pressure Required to Shift Valve	10,5 bar
Maximum Operating Pressure	350 bar
Maximum Valve Leakage at 110 SUS (24 cSt)	30 cc/min.@70 bar
Pilot Volume Displacement	0,82 cc
Valve Hex Size	28,6 mm
Valve Installation Torque	61 - 68 Nm
Seal kit - Cartridge	Buna: 990-052-007
Seal kit - Cartridge	Viton: 990-052-006
Model Weight	0.47 kg.

SYMBOLS

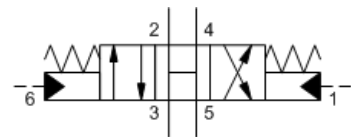
C-Spool



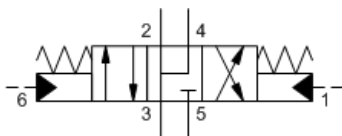
B-Spool



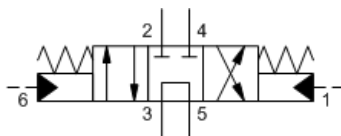
H-Spool



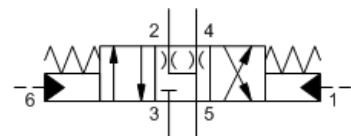
R-Spool



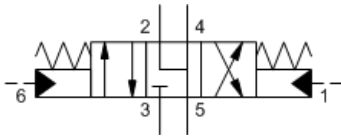
T-Spool



W-Spool



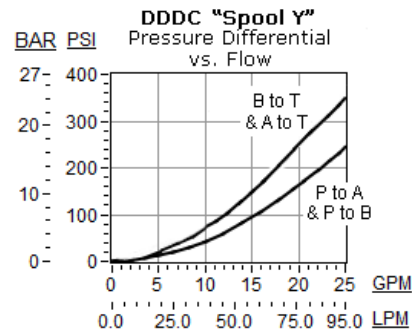
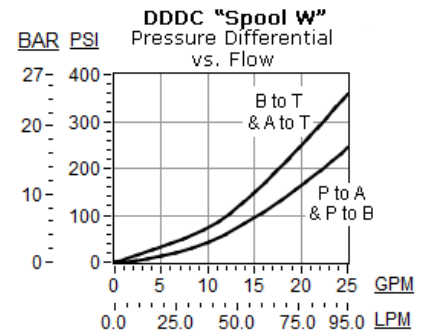
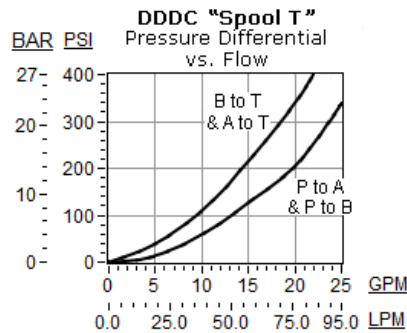
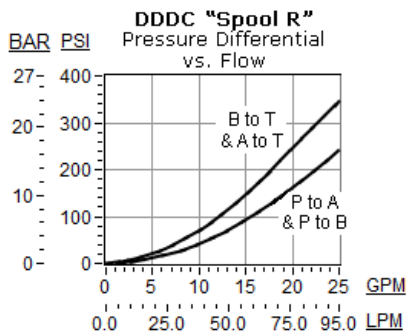
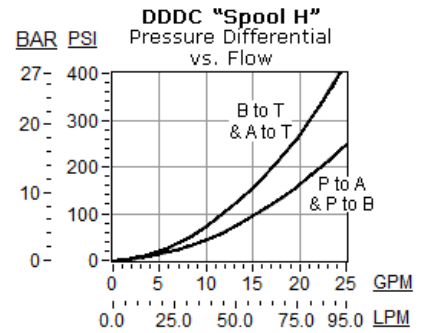
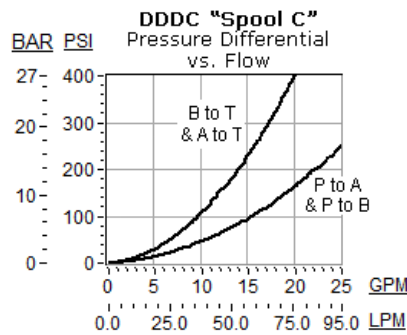
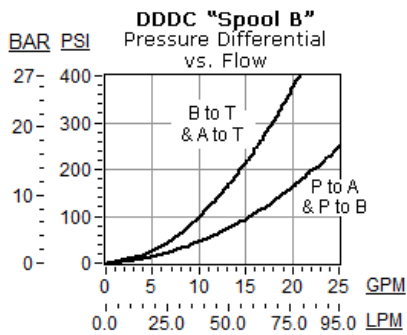
Y-Spool



TECHNICAL FEATURES

- All ports will accept 5000 psi (350 bar), including the x and y pilot ports (port 1 and port 6).
- Leakage listed in technical data is for each path, including pilot paths.
- Hardened spool and sleeve provide consistent and low spool leakage rates and excellent wear characteristics.
- Incorporates the Sun floating style construction to minimize the possibility of internal parts binding due to excessive installation torque and/or cavity/cartridge machining variations.

PERFORMANCE CURVES



CONFIGURATION OPTIONS

CONTROL

Standard Options	X	Not Adjustable
------------------	---	----------------

SPOOL CONFIGURATION

Standard Options	B	B to T Center
	C	Blocked Center
	H	Open Center
	R	Regen Center
	T	Tandem Center
	W	A and B Bleed to T Center, Restrictive
	Y	A and B to T Center

SEAL MATERIAL

Standard Options	N	Buna-N
	V	Viton

MATERIAL/COATING

Standard Options		Standard Material/Coating
	/AP	Stainless Steel, Passivated

Copyright © 2002-2014 Sun Hydraulics Corporation. All rights reserved.