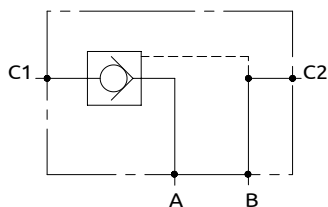
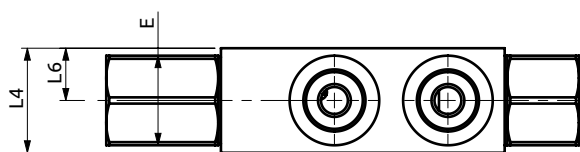
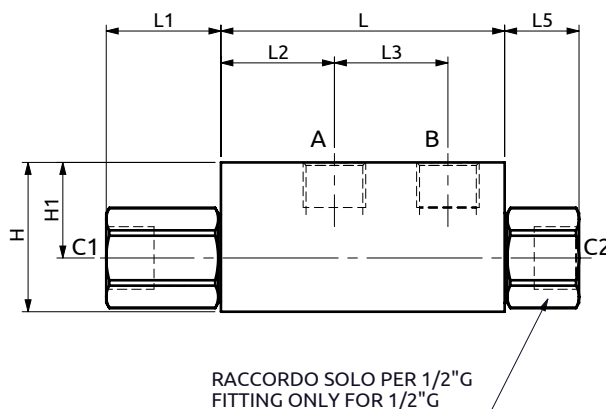
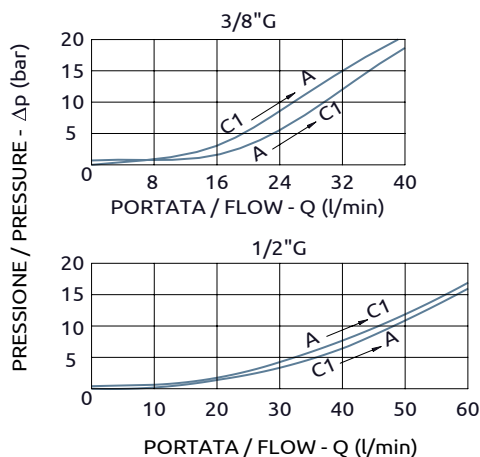




Valvola di blocco semplice effetto pilotata Single pilot operated check valve

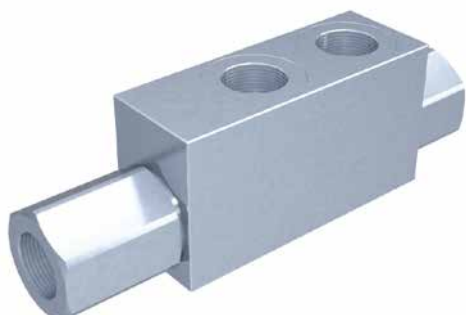


CURVE CARATTERISTICHE
PERFORMANCE CURVES



Corpo in acciaio / Steel body

A050303.01.00	80	36	20	38	35	-	17.5	50	30	HEX 30
A050403.01.00	95	38.5	38	38	35	25	17.5	50	32	HEX 30
COD.	L	L1	L2	L3	L4	L5	L6	H	H1	E



DESCRIZIONE

Permette il flusso libero da A verso C1. Idonea al sostentamento di un carico, non al controllo discesa.

DESCRIPTION

The valve allows free flow from A to C1. Suitable to hold a load not to control a load lowering.

Codice Ordinazione	Rapporto di Pilotaggio	Portata Massima	Pressione Max	Dimensione Porte	Peso
Ordering Code	Pilot Ratio	Max Flow	Max Pressure	Port Size	Weight
A050303.01.00	3.4:1	40 l/min	400 bar	3/8" G	0.6 kg
A050403.01.00	3.4:1	60 l/min	400 bar	1/2" G	0.7 kg