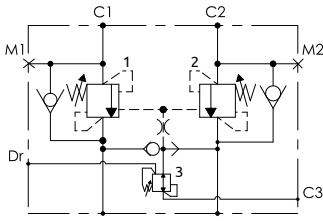


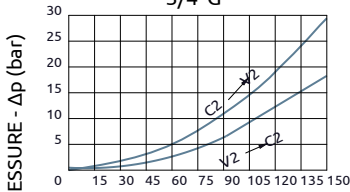


Valvola di blocco bilanciata doppia flangiabile per motori idraulici
Dual overcentre valve, flangeable for hydraulic motors



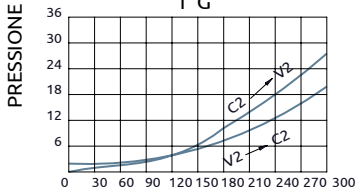
CURVE CARATTERISTICHE
 PERFORMANCE CURVES

3/4" G

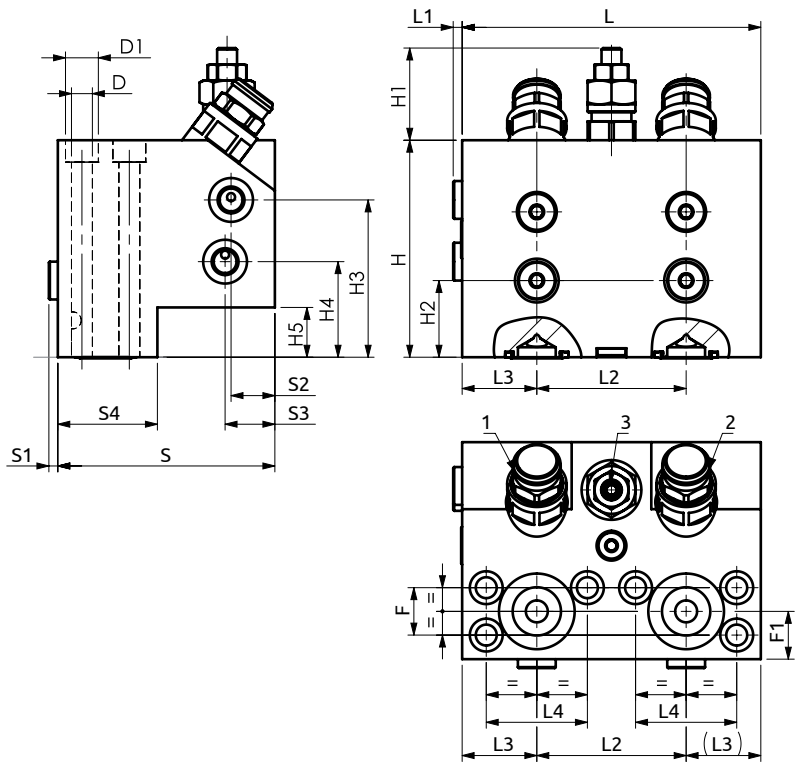


PORTATA / FLOW - Q (l/min)

1" G



PORTATA / FLOW - Q (l/min)



Corpo in acciaio / Steel body

| | | | | | | | | | | | | | | | | | | | | | |
|----------------------|----------|-----------|-----------|-----------|-----------|----------|-----------|-----------|-----------|-----------|----------|-----------|-----------|-----------|-----------|-----------|----------|-----------|-------------|-----------|---------------|
| A078281.03.00 | 150 | 4.5 | 75 | 37.5 | 50.8 | 109 | 4.5 | 22 | 25 | 50 | 109 | ~46 | 38.5 | 79 | 48 | 25 | 23.8 | 24 | Ø10.5 (n.6) | Ø16.5 | 10.8 Kg |
| A078281.02.00 | 150 | 4.5 | 75 | 37.5 | 50.8 | 109 | 4.5 | 22 | 25 | 50 | 109 | ~46 | 38.5 | 79 | 48 | 25 | 23.8 | 24 | Ø10.5 (n.6) | Ø18.5 | 10.8 Kg |
| A078281.07.00 | 165 | 4.5 | 84 | 40.5 | 57.2 | 140 | 4.5 | 20 | 20 | 64 | 139 | ~46 | 50 | 115.5 | 85 | 25 | 27.7 | 33 | Ø10.5 (n.8) | Ø18.5 | 20.6 Kg |
| COD. | L | L1 | L2 | L3 | L4 | S | S1 | S2 | S3 | S4 | H | H1 | H2 | H3 | H4 | H5 | F | F1 | D | D1 | Weight |



| DESCRIZIONE | DESCRIPTION |
|--|---|
| Valvola di blocco bilanciata doppia con flangiatura per motori idraulici SH7V e F12. | Dual flangeable overcenter valve for hydraulic motors SH7V and F12. |

| Codice Ordinazione | Rapporto di Pilotaggio | Campo di Taratura | Taratura Standard | Incremento per Giro | Portata Massima | Pressione Max | Dimensione Porte | | |
|--------------------|------------------------|-------------------|-------------------|---------------------|-----------------|---------------|------------------|----------------|-------------|
| Ordering Code | Pilot Ratio | Pressure Range | Standard Setting | Pressure Increase | Max Flow | Max Pressure | Port Size | | |
| A078281.03.00 | 4:1 | 1 | 100-420 bar | 380 bar | 82 bar/turn | 150 L/min | 420 bar | C1, C2 | 3/4"SAE6000 |
| | | 2 | 100-420 bar | 380 bar | 82 bar/turn | | | V1, V2 | 3/4" G |
| | | 3 | 15-45 bar | 30 bar | 10.5 bar/turn | | | M1, M2, C3, Dr | 1/4" G |
| A078281.02.00 | 8:1 | 1 | 100-420 bar | 380 bar | 82 bar/turn | 150 L/min | 420 bar | C1, C2 | 3/4"SAE6000 |
| | | 2 | 100-420 bar | 380 bar | 82 bar/turn | | | V1, V2 | 3/4" G |
| | | 3 | 15-45 bar | 30 bar | 10.5 bar/turn | | | M1, M2, C3, Dr | 1/4" G |
| A078281.07.00 | 6:1 | 1 | 150-420 bar | 380 bar | 95 bar/turn | 300 L/min | 420 bar | C1, C2 | 1"SAE6000 |
| | | 2 | 150-420 bar | 380 bar | 95 bar/turn | | | V1, V2 | 1" G |
| | | 3 | 15-45 bar | 30 bar | 10.5 bar/turn | | | M1, M2, C3, Dr | 1/4" G |