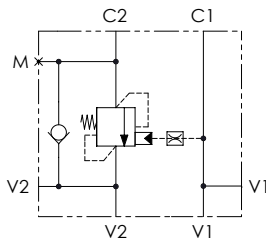


### Schema idraulico - Hydraulic circuit



### Dati tecnici - Technical data

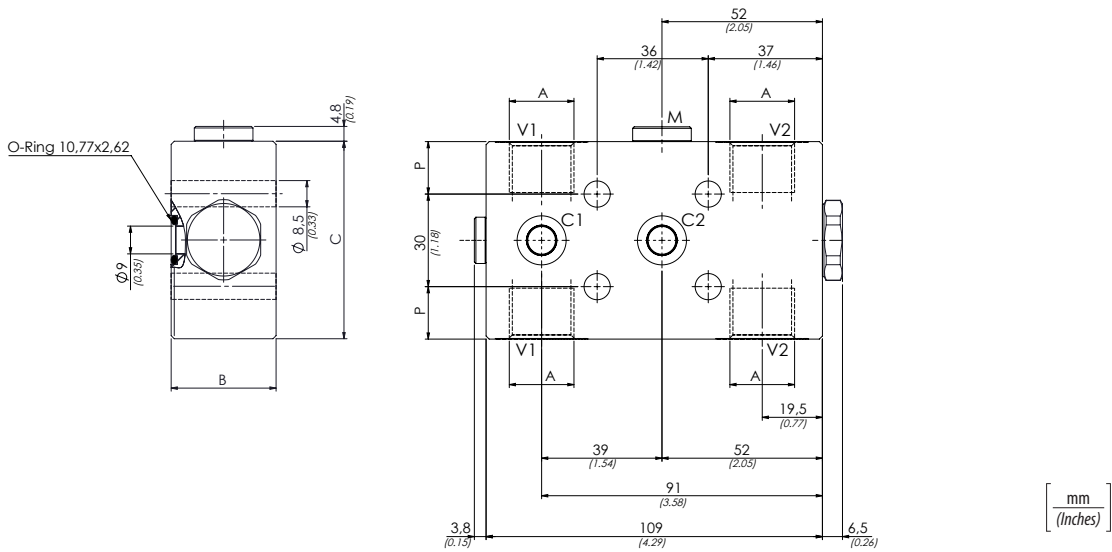
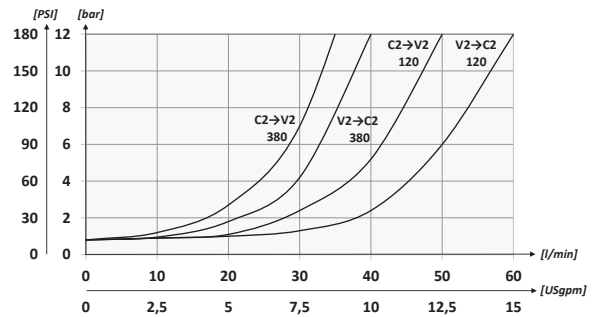
olio idraulico/Mineral oil	ISO 6743/4 (DIN 51524)	
Viscosità olio/Oil viscosity	15-250 mm <sup>2</sup> /s (15 to 250 cSt)	
Classe di contaminazione max con filtro Max contamination index with filter	ISO 4406:1999 Classe 19/17/14	
Temperatura dell'olio/Oil temperature	-20°C +80°C	-4°F + 176°F
Temperatura ambiente/Ambient temperature	-20°C +50°C	-4°F + 122°F
È indispensabile l'utilizzo di un filtro per proteggere la valvola (filtrazione consigliata 15 µm) It is necessary a filter use to protect the valve (advised filtration 15 µm)		

### Codice ordinazione Ordering code

01	02	03	04
<b>VBZF</b>		<b>2</b>	

<b>01</b>	Valvole di bilanciamento singole per centro aperto - flangiate a taratura fissa (Single counterbalance valves fixed setting for open center - flanged version)	<b>VBZF</b>
<b>02</b>	Dimensione (Size)	BSPP 3/8 <b>380</b>
		BSPP 1/2 <b>120</b>
<b>03</b>	Taratura (Setting) Q=5 l/min 350 bar (5075 PSI)	<b>2</b>
<b>04</b>	Materiale (Material)	Corpo in acciaio + zincatura (Steel body + zinc-plated) <b>S</b>
		Corpo in acciaio + zinco-nichel (Steel body + zinc-nickel) <b>K</b>
Rapporto di pilotaggio (Pilot ratio) 1:4.25		

### Performances



### Caratteristiche tecniche - Technical characteristics

Tipo Type	A	Portata max (l/min) Max flow (USgpm)	Pressione max (bar) Max pressure (PSI)	B	C	M	P	Peso approssimativo (kg) Approx weight (lb)
<b>VBZF380</b>	<b>BSPP 3/8</b>	<b>40 (10.6)</b>	<b>350 (5075)</b>	<b>29 (1.14)</b>	<b>54 (2.13)</b>	<b>BSPP 1/4</b>	<b>12 (0.47)</b>	<b>1,10 (2.42)</b>
<b>VBZF120</b>	<b>BSPP 1/2</b>	<b>60 (15.9)</b>		<b>34 (1.34)</b>	<b>64 (2.52)</b>		<b>17 (0.67)</b>	<b>1,48 (3.25)</b>