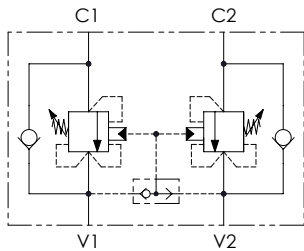
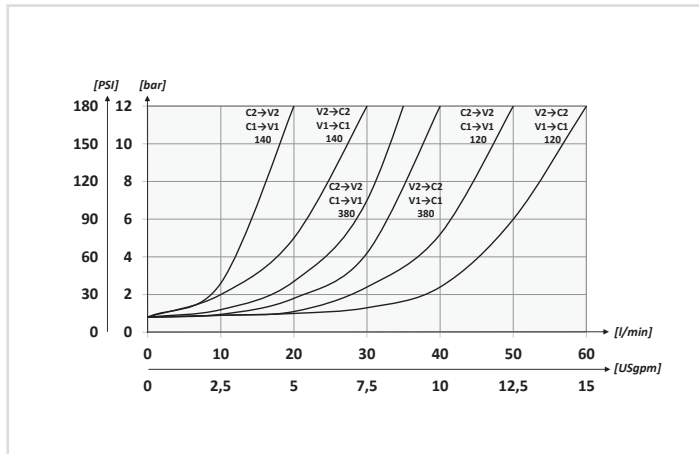


Schema idraulico - Hydraulic circuit



Performances



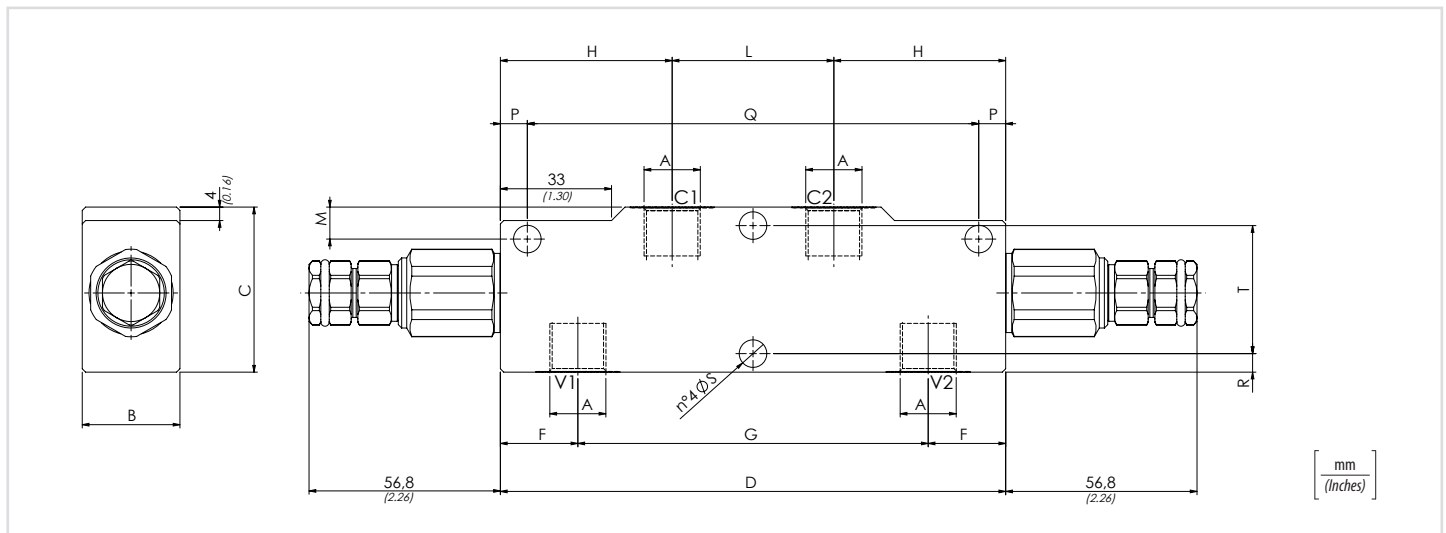
Codice ordinazione Ordering code

01	02	03	04	05
VBCC			S	

01	Valvole di bilanciamento doppie per centro chiuso (Dual counterbalance valves for closed center)		VBCC			
02	Dimensione (Size)	BSPP 1/4	140			
		BSPP 3/8	380			
		BSPP 1/2	120			
03	Molla (Spring) 30/210 bar (435/3045 PSI)	Rp 1:4.25	Incremento pressione al giro (Press. increase) 78 bar/al giro (1131 PSI/turn)	Taratura standard (Std. setting) Q=5 l/min 200 bar (2900 PSI)	1	
		Rp 1:8.75	Incremento pressione al giro (Press. increase) 160 bar/al giro (2320 PSI/turn)			
	Molla (Spring) 60/350 bar (870/5075 PSI)	Rp 1:4.25	Incremento pressione al giro (Press. increase) 135 bar/al giro (1958 PSI/turn)	Taratura standard (Std. setting) Q=5 l/min 350 bar (5075 PSI)		2
		Rp 1:8.75	Incremento pressione al giro (Press. increase) 160 bar/al giro (2320 PSI/turn)			
04	Materiale (Material)	Corpo in acciaio + zincatura (Steel body + zinc-plated)	S			
05	Rapporto di pilotaggio (Pilot ratio)	1:4.25 Standard	/			
		1:8.75	8			

Dati tecnici - Technical data

Olio idraulico/Mineral oil	ISO 6743/4 (DIN 51524)
Viscosità olio/Oil viscosity	15-250 mm ² /s (15 to 250 cSt)
Classe di contaminazione max con filtro Max contamination index with filter	ISO 4406:1999 Classe 19/17/14
Temperatura dell'olio/Oil temperature	-20°C +80°C -4°F +176°F
Temperatura ambiente/Ambient temperature	-20°C +50°C -4°F +122°F
È indispensabile l'utilizzo di un filtro per proteggere la valvola (filtrazione consigliata 15 µm) It is necessary a filter use to protect the valve (advised filtration 15 µm)	



Caratteristiche tecniche - Technical characteristics

Tipo Type	A	Portata max Max flow l/min-USgpm	Pressione max Max pressure bar/PSI	B	C	D	F	G	H	L	M	P	Q	R	S	T	Peso approssimativo (kg) Approx weight (lb)
VBCC140	BSPP 1/4	30 (8)	350 (5075)	29 (1.14)	49 (1.93)	150 (5.91)	23 (0.91)	104 (4.09)	51 (2.01)	48 (1.89)	10 (0.39)	8 (0.31)	134 (5.28)	5,5 (0.22)	8,2 (0.32)	38 (1.50)	1,68 (3.70)
VBCC380	BSPP 3/8	40 (10.5)			59 (2.32)		21 (0.83)	108 (4.25)						7,5 (0.29)		43 (1.69)	1,66 (3.66)
VBCC120	BSPP 1/2	60 (16)															1,89 (4.16)