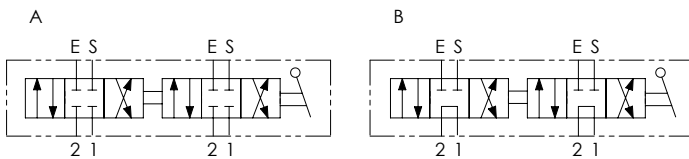




### Schema idraulico - Hydraulic circuit



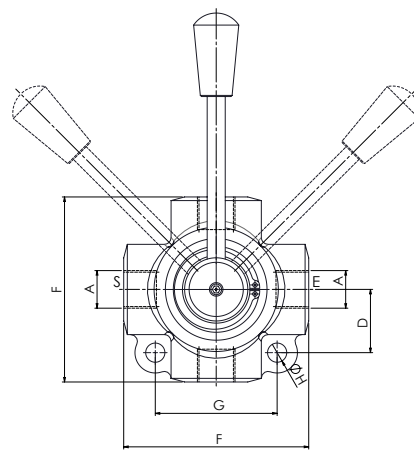
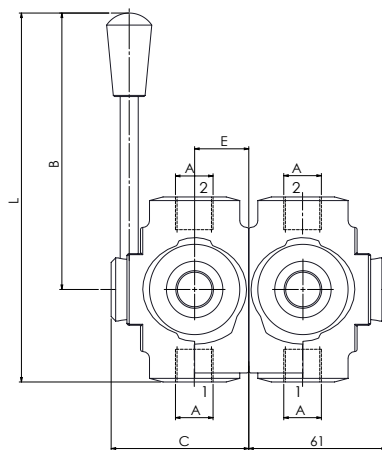
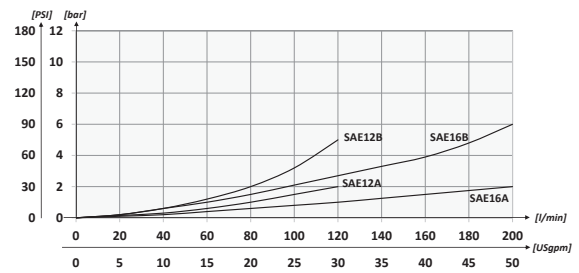
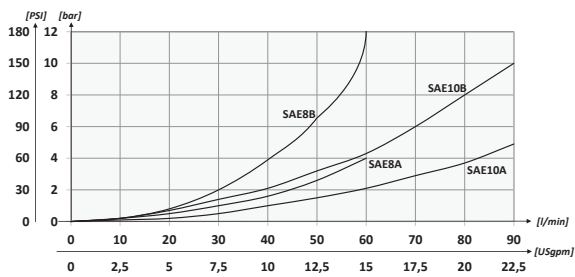
	01	02	03
<b>Codice ordinazione</b> <b>Ordering code</b>	<b>IDF8SAE</b>		

<b>01</b>	Deviatori di flusso a 8 vie (8 ways flow diverters)	<b>IDF8SAE</b>	
<b>02</b>	Dimensione (Size)	3/4-16UNF	<b>8</b>
		7/8-14UNF	<b>10</b>
		1-1/16-12UN	<b>12</b>
		1-5/16-12UN	<b>16</b>
<b>03</b>	Schema (Circuit)	<b>Centro chiuso (Closed centre)</b>	<b>A</b>
		<b>Centro aperto (Open centre)</b>	<b>B</b>

### Dati tecnici - Technical data

<b>Olio idraulico/Mineral oil</b>	<b>ISO 6743/4 (DIN 51524)</b>	
<b>Viscosità olio/Oil viscosity</b>	<b>15-250 mm<sup>2</sup>/s (15 to 250 cSt)</b>	
<b>Classe di contaminazione max con filtro</b> <i>Max contamination index with filter</i>	<b>ISO 4406:1999 Classe 19/17/14</b>	
<b>Temperatura dell'olio/Oil temperature</b>	<b>-20°C +80°C</b>	<b>-4°F + 176°F</b>
<b>Temperatura ambiente/Ambient temperature</b>	<b>-20°C +50°C</b>	<b>-4°F + 122°F</b>
<b>Trafilamento massimo</b> <i>Max internal leakage</i>	<b>7 gocce al min.</b> <b>7 drops-min</b>	<b>200 bar</b> <b>2900 PSI</b>
<b>È indispensabile l'utilizzo di un filtro per proteggere la valvola (filtrazione consigliata 15 µm)</b> <i>It is necessary a filter use to protect the valve (advised filtration 15 µm)</i>		

### Performances



mm  
(Inches)

### Caratteristiche tecniche - Technical characteristics

Tipo Type	A	Portata max Max flow l/min-USgpm	Pressione max Max pressure bar/PSI	B	C	D	E	F	G	H	L	Peso approssimativo Approx weight kg/lb
<b>IDF8SAE8</b>	<b>3/4-16UNF</b>	<b>60+60 (15.8+15.8)</b>	<b>350 (5075)</b>	<b>115 (4.53)</b>	<b>63 (2.48)</b>	<b>28 (1.10)</b>	<b>24 (0.94)</b>	<b>80 (3.15)</b>	<b>54 (2.13)</b>	<b>8,5 (0.33)</b>	<b>155 (6.10)</b>	<b>2,3 (5)</b>
<b>IDF8SAE10</b>	<b>7/8-14UNF</b>	<b>90+90 (23.8+23.8)</b>										<b>2,1 (4.6)</b>
<b>IDF8SAE12</b>	<b>1-1/16-12UN</b>	<b>120+120 (31.7+31.7)</b>	<b>300 (4350)</b>	<b>77 (3.03)</b>	<b>77 (3.03)</b>	<b>38 (1.50)</b>	<b>31 (1.22)</b>	<b>94 (3.70)</b>	<b>74 (2.91)</b>	<b>10,5 (0.41)</b>	<b>162 (6.38)</b>	<b>4,3 (9.5)</b>
<b>IDF8SAE16</b>	<b>1-5/16-12UN</b>	<b>200+200 (52.8+52.8)</b>										<b>4 (8.8)</b>