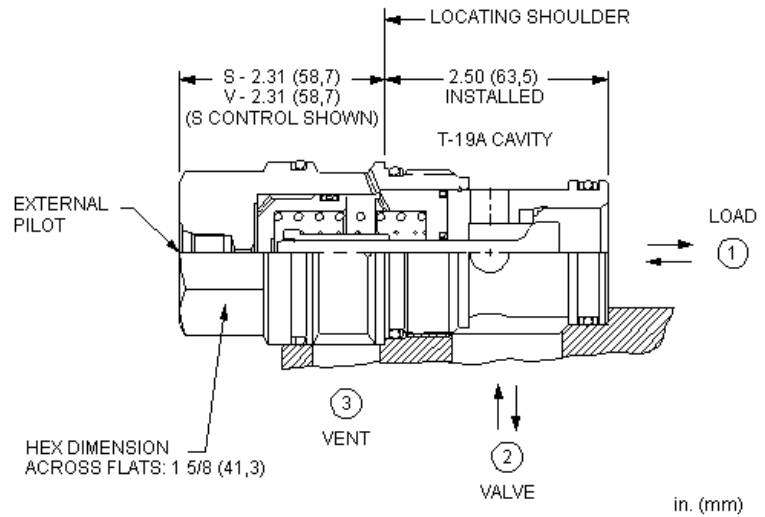
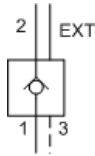


MODEL  
CKIG

Vented pilot-to-open check valve with external pilot port, standard pilot, stem seal, and Delrin seat  
CAPACITY: 480 L/min. | CAVITY: T-19A



**CONFIGURATION**

|          |                   |   |
|----------|-------------------|---|
| <b>S</b> | Control           | External 4-SAE Pilot Port, Vent to Port 3 |
| <b>C</b> | Cracking Pressure | 30 psi (2 bar)                            |
| <b>N</b> | Seal Material     | Buna-N                                    |

This valve is a pilot to open check valve. It has a non-sealed pilot, a Delrin seat, and is vented. It allows free flow from the valve (port 2) to the load (port 1) and blocks flow in the opposite direction. Pressure at the external pilot port will open the valve from port 1 to port 2. Pilot pressure needed to open the valve is directly proportional to the load pressure at port 1. The valve is insensitive to pressure at port 2 because the spring chamber references the vent (port 3).

**TECHNICAL DATA**

|   |                           |
|---|---------------------------|
| Cavity                                    | T-19A                     |
| Series                                    | 4                         |
| Capacity                                  | 480 L/min.                |
| Pilot Ratio                               | 3:1                       |
| Maximum Operating Pressure                | 175 bar                   |
| Maximum Valve Leakage at 110 SUS (24 cSt) | 0,07 cc/min.              |
| Valve Hex Size                            | 41,3 mm                   |
| Valve Installation Torque                 | 475 - 508 Nm              |
| Seal kit - Cartridge                      | Buna: 990-019-007         |
| Seal kit - Cartridge                      | Polyurethane: 990-019-002 |
| Seal kit - Cartridge                      | Viton: 990-019-006        |
| Model Weight                              | 1.17 kg.                  |

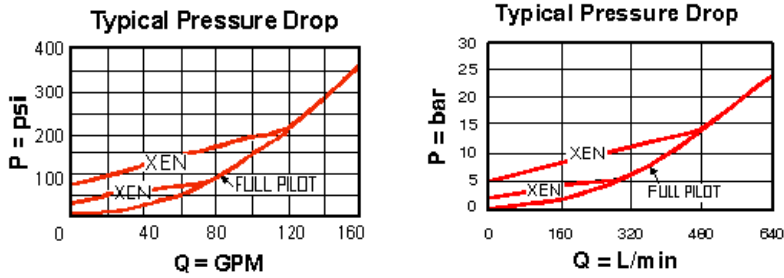
**TECHNICAL FEATURES**

- There is a positive seal between ports 2 and 3.
- These valves should be considered service items only. New applications should use valves from the CV\*V family.
- This valve has a proportional pressure reducing characteristic that limits the pressure developed at port 1 to about 75% of the pressure at port 2.
- Pilot pressure as low as 15 psi (1 bar) higher than the pressure at the vent can prevent the valve from closing.
- Provides hose break protection, prevents loads from drifting and positively locks pressurized loads.
- Standard unsealed pilot allows air trapped in the pilot line to be purged from the circuit.
- Pilot-to-open check cartridges are locking valves, not motion control valves. For motion control applications, use counterbalance valves.
- The Delrin seat is suitable for dirty, medium pressure systems that are not subjected to high flows or temperatures.

- Extremely low leakage. If the load drifts due to the valve, the seat has probably been damaged by contamination and the valve should be replaced.
- This 3 port pilot-to-open check valve is not physically interchangeable with other 3 port pilot-to-open check valves or counterbalance valves due to the different pilot/vent configuration.
- Incorporates the Sun floating style construction to minimize the possibility of internal parts binding due to excessive installation torque and/or cavity/cartridge machining variations.

---

## PERFORMANCE CURVES




---

## CONFIGURATION OPTIONS

### CONTROL

|                  |   |  |
|------------------|---|--|
| Standard Options | S | External 4-SAE Pilot Port, Vent to Port 3    |
|                  | V | External 1/4 NPTF Pilot Port, Vent to Port 3 |

### CRACKING PRESSURE

|                  |   |                  |
|------------------|---|------------------|
| Standard Options | B | 15 psi (1 bar)   |
|                  | C | 30 psi (2 bar)   |
|                  | D | 50 psi (3,5 bar) |
|                  | E | 75 psi (5 bar)   |
|                  | F | 100 psi (7 bar)  |

### SEAL MATERIAL

|                  |   |        |
|------------------|---|--------|
| Standard Options | N | Buna-N |
|                  | V | Viton  |

Copyright © 2002-2014 Sun Hydraulics Corporation. All rights reserved.