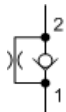


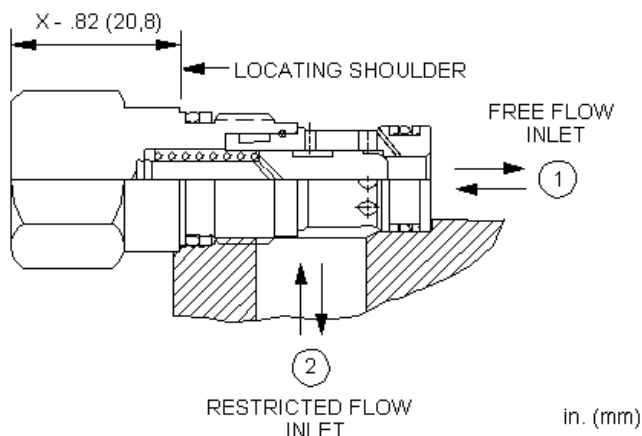
MODEL
CNBC

Free flow nose to side check valve with bypass orifice
CAPACITY: 30 L/min. | CAVITY: T-162A



CONFIGURATION

X	Control	Not Adjustable
C	Setting Range	30 psi (2 bar) Cracking Pressure, .016 - .062 in. (0,4 - 1,6 mm)
N	Seal Material	Buna-N



Free-flow, nose-to-side check valves with a bypass orifice allow free flow from port 1 to port 2. A customer specified orifice is included to restrict flow from port 2 to port 1. See technical data below for orifice range.

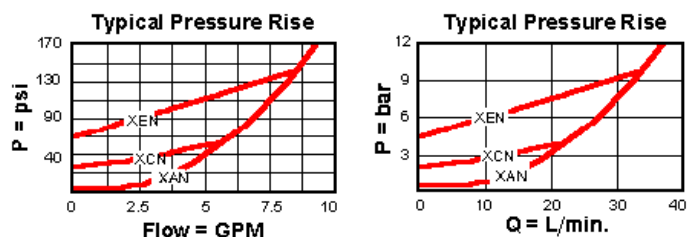
TECHNICAL DATA

Cavity	T-162A
Series	0
Capacity	30 L/min.
Maximum Operating Pressure	350 bar
Orifice Range	0,4 - 1,6 mm
Valve Hex Size	19,1 mm
Valve Installation Torque	27 - 34 Nm
Seal kit - Cartridge	Buna: 990-162-007
Seal kit - Cartridge	Polyurethane: 990-162-002
Seal kit - Cartridge	Viton: 990-162-006
Model Weight	0.08 kg.

TECHNICAL FEATURES

- Two-port check valves share the same cavity for a given frame size, however, pay close attention as flow paths may be in opposite directions.
- Will accept 5000 psi (350 bar) at ports 1 and 2.
- Valves with the opposite flow path (free flow from 2 to 1) are considered flow controls and may be found listed as fixed orifice, non-pressure compensated flow control valve with reverse flow check.
- The customer specified orifice diameter is stamped on one of the cartridge's hex faces.
- Incorporates the Sun floating style construction to minimize the possibility of internal parts binding due to excessive installation torque and/or cavity/cartridge machining variations.

PERFORMANCE CURVES



Note: Performance data shown reflects a blocked orifice.

CONFIGURATION OPTIONS

CONTROL

Standard Options	X	Not Adjustable
------------------	---	----------------

SETTING RANGE

Standard Options	A	4 psi (0,3 bar) Cracking Pressure, .016 - .062 in. (0,4 - 1,6 mm)
	B	15 psi (1 bar) Cracking Pressure, .016 - .062 in. (0,4 - 1,6 mm)
	C	30 psi (2 bar) Cracking Pressure, .016 - .062 in. (0,4 - 1,6 mm)
	D	50 psi (3,5 bar) Cracking Pressure, .016 - .062 in. (0,4 - 1,6 mm)
	E	75 psi (5 bar) Cracking Pressure, .016 - .062 in. (0,4 - 1,6 mm)
	F	100 psi (7 bar) Cracking Pressure, .016 - .062 in. (0,4 - 1,6 mm)

SEAL MATERIAL

Standard Options	N	Buna-N
	V	Viton

Copyright © 2002-2014 Sun Hydraulics Corporation. All rights reserved.