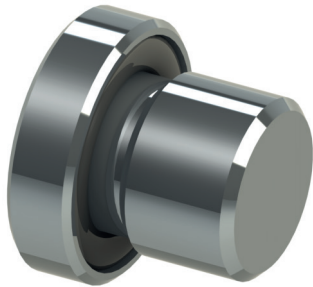
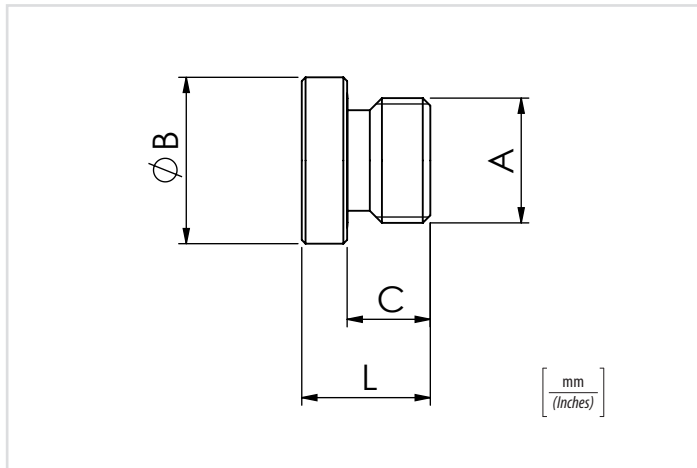


01

Codice ordinazione  
Ordering code



01	TAPPI (Plugs)	83500001	BSPP 1/8
		83500002	BSPP 1/4
		83500003	BSPP 3/8
		83500004	BSPP 1/2
		83500005	BSPP 3/4



### Caratteristiche tecniche - Technical characteristics

A	B	C	L	Peso approssimativo Approx weight kg/lb
BSPP 1/8	15 (0.59)	9 (0.35)	13 (0.51)	0,01 (0.022)
BSPP 1/4	19 (0.75)	11 (0.43)	16 (0.63)	0,015 (0.033)
BSPP 3/8	22 (0.87)	11 (0.43)	17 (0.67)	0,03 (0.066)
BSPP 1/2	27 (1.06)	14 (0.55)	20 (0.79)	0,05 (0.11)
BSPP 3/4	32 (1.26)			0,07 (0.15)