



Codice ordinazione / Ordering code

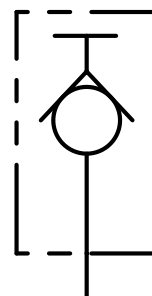
01	02
XMNP	

01	Miniprese prova pressione (Test couplings for pressure checking)	XMNP
02	Dimensione (Size)	BSPP 1/8
		BSPP 1/4
		BSPP 3/8
		BSPP 1/2

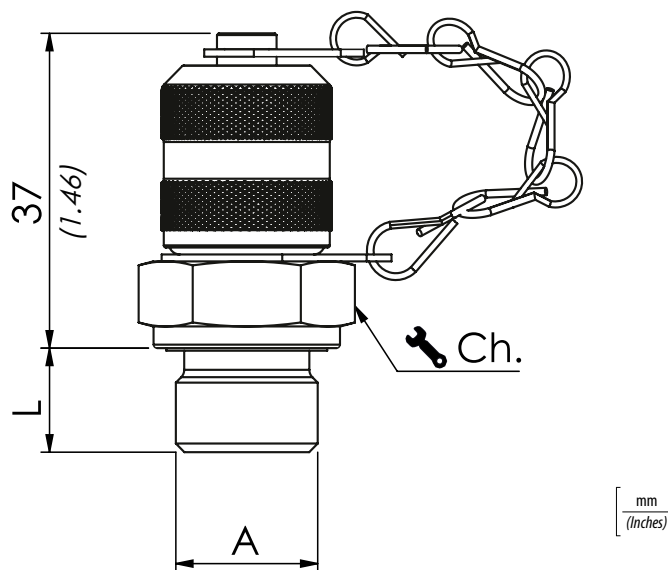
Dati tecnici - Technical data

Particolare / Component	Materiale / Material
Corpo / Body	1.4404 (AISI 316L)
Cappuccio di protezione / Safety cap	1.4404 (AISI 316L)
Guarnizioni / O-rings	Viton (FKM)

Schema idraulico - Hydraulic circuit



**Miniprese - Test couplings
M16x2**



Caratteristiche tecniche - Technical characteristics

Tipo / Type	A	Pressione max / Max pressure bar/PSI	Ch. mm	L	Coppia di serraggio / Tightening torque Nm/lbf ft	Peso approssimativo / Approx weight kg/lb
XMNP180	BSPP 1/8	630 (9135)	17	8 (0.31)	20 (14.6)	0,07 (0.16)
XMNP140	BSPP 1/4		19	12 (0.47)	30 (22)	0,08 (0.18)
XMNP380	BSPP 3/8		22	12 (0.47)	60 (44)	0,10 (0.22)
XMNP120	BSPP 1/2		27	14 (0.55)	80 (58.6)	0,13 (0.29)