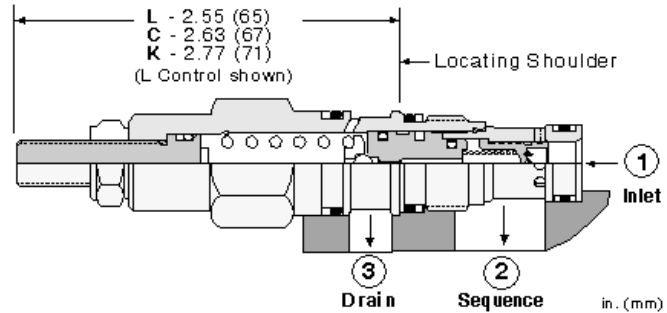
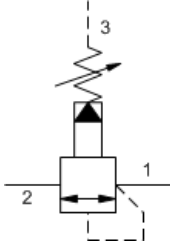


MODEL
RSBC

Pilot operated, balanced piston sequence valve
CAPACITY: 30 L/min. | CAVITY: T-163A



CONFIGURATION

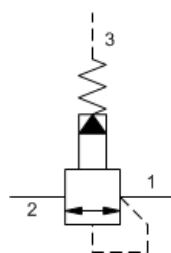
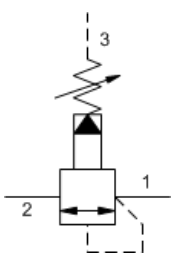
L	Control	Standard Screw Adjustment
A	Adjustment Range	75 - 3000 psi (5 - 210 bar), 1000 psi (70 bar) Standard Setting
N	Seal Material	Buna-N
(none)	Material/Coating	Standard Material/Coating

Pilot-operated, balanced piston sequence valves will supply a secondary circuit with flow once the pressure at the inlet (port 1) has exceeded the valve setting. The pressure setting of a sequence valve controls the pressure at port 1 relative to the pressure at the drain (port 3). These valves are insensitive to back pressure at port 2 (sequence), up to the valve setting. They may be used to regulate pressure in place of 2-port relief valves if there is pressure in the return line.

TECHNICAL DATA

Cavity	T-163A
Series	0
Capacity	30 L/min.
Factory Pressure Settings Established at	15 L/min.
Maximum Operating Pressure	350 bar
Response Time - Typical	10 ms
Maximum Valve Leakage at 110 SUS (24 cSt)	30 cc/min.
Adjustment - Number of Clockwise Turns to Increase Setting	5
Valve Hex Size	19,1 mm
Valve Installation Torque	27 - 34 Nm
Adjustment Screw Internal Hex Size	4 mm
Locknut Hex Size	15 mm
Locknut Torque	9 - 10 Nm
Seal kit - Cartridge	Buna: 990-163-007
Seal kit - Cartridge	Polyurethane: 990-163-002
Seal kit - Cartridge	Viton: 990-163-006
Model Weight	0.11 kg.

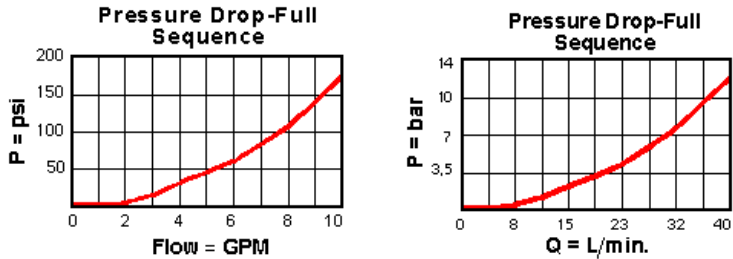
SYMBOLS



TECHNICAL FEATURES

- All 3 port sequence cartridges are physically and functionally interchangeable (i.e. same flow path, same cavity for a given frame size).
- Pilot flow continues to increase as the pressure at port 1 (inlet), relative to the pressure at port 3 (drain), rises above the valve setting.
- The main stage orifice is protected by a 150 micron stainless steel screen.
- Minimum setting is 75 psi (5 bar) for all spring ranges.
- Pressure at port 3 is directly additive to the valve setting at a 1:1 ratio and should not exceed 5000 psi (350 bar).
- Not suitable for use in load holding applications due to spool leakage.
- Incorporates the Sun floating style construction to minimize the possibility of internal parts binding due to excessive installation torque and/or cavity/cartridge machining variations.

PERFORMANCE CURVES



CONFIGURATION OPTIONS

CONTROL

Preferred Options	L	Standard Screw Adjustment
Standard Options	C	Tamper Resistant - Factory Set
	K	Handknob

ADJUSTMENT RANGE

Preferred Options	A	75 - 3000 psi (5 - 210 bar), 1000 psi (70 bar) Standard Setting
	W	75 - 4500 psi (5 - 315 bar), 1000 psi (70 bar) Standard Setting
Standard Options	B	75 - 1500 psi (5 - 105 bar), 1000 psi (70 bar) Standard Setting
	C	75 - 6000 psi (5 - 420 bar), 1000 psi (70 bar) Standard Setting
	N	75 - 800 psi (5 - 55 bar), 400 psi (28 bar) Standard Setting
	Q	75 - 400 psi (5 - 28 bar), 200 psi (14 bar) Standard Setting

SEAL MATERIAL

Preferred Options	N	Buna-N
Standard Options	V	Viton

MATERIAL/COATING

Standard Options		Standard Material/Coating
	/AP	Stainless Steel, Passivated

Copyright © 2002-2014 Sun Hydraulics Corporation. All rights reserved.