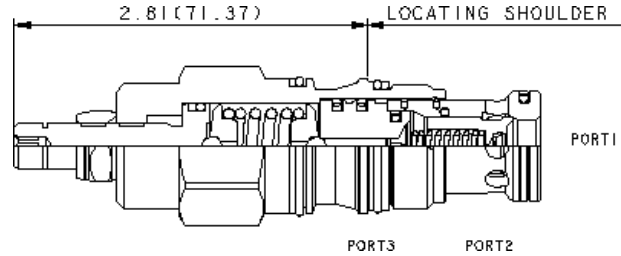
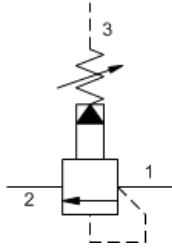


MODEL  
RSFS

Pilot operated, balanced poppet sequence valve  
CAPACITY: 120 L/min. | CAVITY: T-2A



### CONFIGURATION

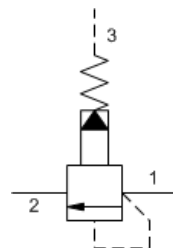
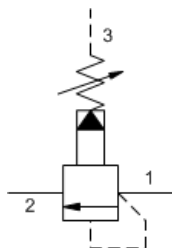
<b>L</b>	Control	Standard Screw Adjustment
<b>A</b>	Adjustment Range	100 - 3000 psi (7 - 210 bar), 1000 psi (70 bar) Standard Setting
<b>N</b>	Seal Material	Buna-N
<b>(none)</b>	Material/Coating	Standard Material/Coating

Pilot-operated, balanced poppet sequence valves will supply a secondary circuit with flow once the pressure at the inlet (port 1) has exceeded the valve setting. The pressure setting of a sequence valve controls the pressure at port 1 relative to the pressure at the drain (port 3). These valves are insensitive to back pressure at port 2 (sequence), up to the valve setting. They may be used to regulate pressure in place of 2-port relief valves if there is pressure in the return line.

### TECHNICAL DATA

Cavity	T-2A
Series	2
Capacity	120 L/min.
Factory Pressure Settings Established at	15 L/min.
Maximum Operating Pressure	350 bar
Response Time - Typical	10 ms
Maximum Valve Leakage at Reseat	0,7 cc/min.
Adjustment - Number of Clockwise Turns to Increase Setting	5
Valve Hex Size	28,6 mm
Valve Installation Torque	61 - 68 Nm
Adjustment Screw Internal Hex Size	4 mm
Locknut Hex Size	15 mm
Locknut Torque	9 - 10 Nm
Seal kit - Cartridge	Buna: 990-402-007
Seal kit - Cartridge	Polyurethane: 990-002-002
Seal kit - Cartridge	Viton: 990-402-006
Model Weight	0.29 kg.

### SYMBOLS

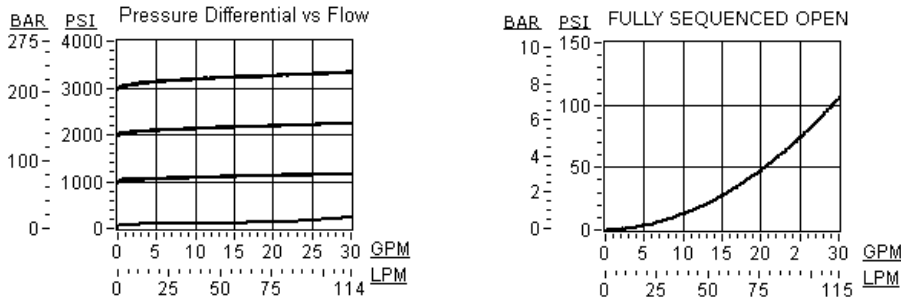


### TECHNICAL FEATURES

- All 3 port sequence cartridges are physically and functionally interchangeable (i.e. same flow path, same cavity for a given frame size).

- Pilot flow continues to increase as the pressure at port 1 (inlet), relative to the pressure at port 3 (drain), rises above the valve setting.
- The main stage orifice is protected by a 150 micron stainless steel screen.
- Pressure at port 3 is directly additive to the valve setting at a 1:1 ratio and should not exceed 5000 psi (350 bar).
- Suitable for use in load holding applications.
- Because the modulating occurs inside the cartridge these valves are immune to most of the problems associated with cavitation, namely noise and manifold erosion.
- Will accept maximum pressure at port 2; suitable for use in cross port relief circuits.
- Incorporates the Sun floating style construction to minimize the possibility of internal parts binding due to excessive installation torque and/or cavity/cartridge machining variations.

## PERFORMANCE CURVES



## CONFIGURATION OPTIONS

### CONTROL

Standard Options	C	Tamper Resistant - Factory Set
	K	Handknob
	L	Standard Screw Adjustment

### ADJUSTMENT RANGE

Standard Options	A	100 - 3000 psi (7 - 210 bar), 1000 psi (70 bar) Standard Setting
	B	50 - 1500 psi (3,5 - 105 bar), 1000 psi (70 bar) Standard Setting
	C	150 - 6000 psi (10,5 - 420 bar), 1000 psi (70 bar) Standard Setting
	N	60 - 800 psi (4 - 55 bar), 200 psi (14 bar) Standard Setting
	Q	60 - 400 psi (4 - 28 bar), 200 psi (14 bar) Standard Setting
	W	150 - 4500 psi (10,5 - 315 bar), 1000 psi (70 bar) Standard Setting

### SEAL MATERIAL

Standard Options	N	Buna-N
	V	Viton

### MATERIAL/COATING

Standard Options		Standard Material/Coating
	/AP	Stainless Steel, Passivated

## RELATED MODELS

### RSFS8

Pilot operated, balanced poppet sequence main stage with integral T-8A control cavity

Copyright © 2002-2014 Sun Hydraulics Corporation. All rights reserved.