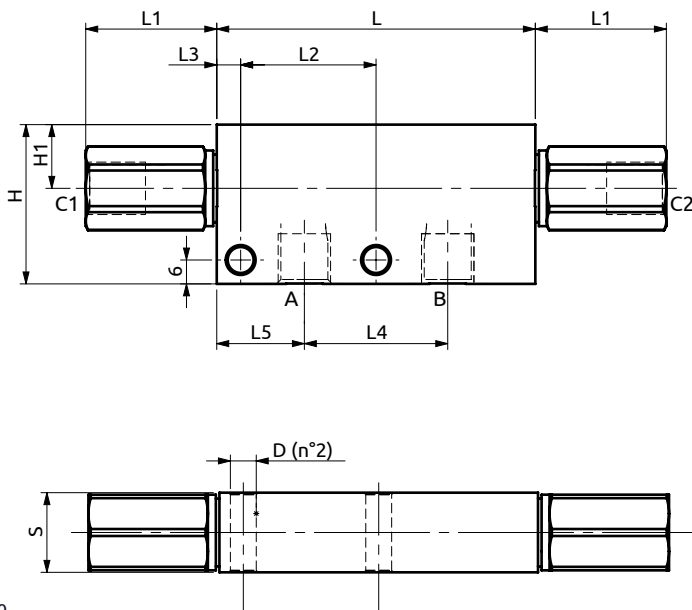
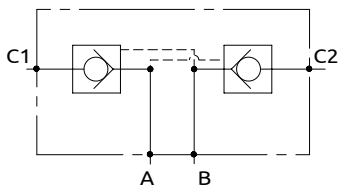
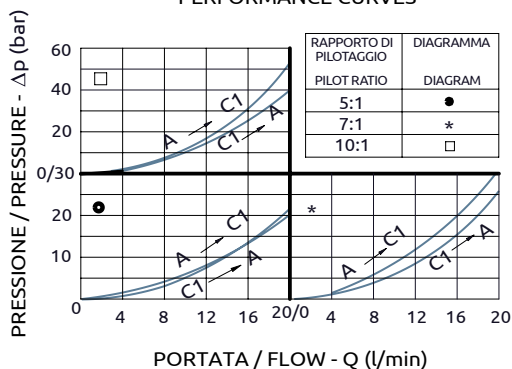




Valvola di blocco doppia pilotata  
Dual pilot operated check valve



CURVE CARATTERISTICHE  
PERFORMANCE CURVES



Corpo in acciaio / Steel body

80	33	34	6	36	22	20	40	16	Ø6.5
L	L1	L2	L3	L4	L5	S	H	H1	D



DESCRIZIONE	DESCRIPTION
Permette il flusso libero da A verso C1 e da B verso C2, mentre nelle direzioni inverse il flusso è pilotato. Idonea al sostentamento di un carico, non al controllo discesa.	The valve allows free flow from A to C1 and from B to C2, whereas in the opposite directions the flow is piloted. Suitable to hold a load not to control a load lowering.

Codice Ordinazione Ordering Code	Rapporto di Pilotaggio Pilot Ratio	Portata Massima Max Flow	Pressione Max Max Pressure	Dimensione Porte Port Size	Peso Weight
A050253.10.00	5:1	20 l/min	350 bar	1/4"G	0.55 kg
A050253.11.00	7:1	20 l/min	350 bar	1/4"G	0.55 kg
A050253.12.00	10:1	20 l/min	350 bar	1/4"G	0.55 kg