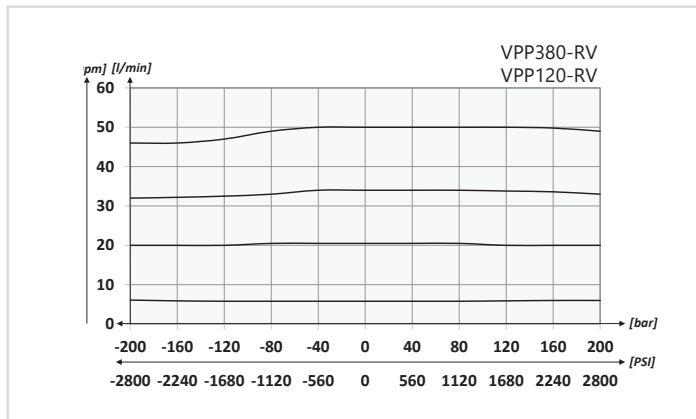


### Dati tecnici - Technical data

<b>Olio idraulico/Mineral oil</b>	ISO 6743/4 (DIN 51524)		
<b>Viscosità olio/Oil viscosity</b>	15-250 mm <sup>2</sup> /s (15 to 250 cSt)		
<b>Classe di contaminazione max con filtro</b> Max contamination index with filter	ISO 4406:1999 Classe 19/17/14		
<b>Temperatura dell'olio/Oil temperature</b>	-20°C +80°C	-4°F + 176°F	
<b>Temperatura ambiente/Ambient temperature</b>	-20°C +50°C	-4°F + 122°F	
<b>È indispensabile l'utilizzo di un filtro per proteggere la valvola (filtrazione consigliata 15 µm)</b> It is necessary a filter use to protect the valve (advised filtration 15 µm)			

### Performances



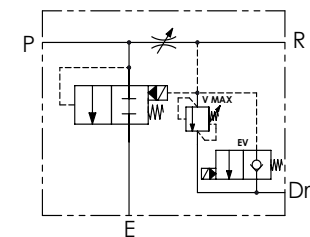
01 02 03 04 05 06 07

### Codice ordinazione Ordering code

<b>VPP</b>	<b>V</b>	<b>RV</b>				
------------	----------	-----------	--	--	--	--

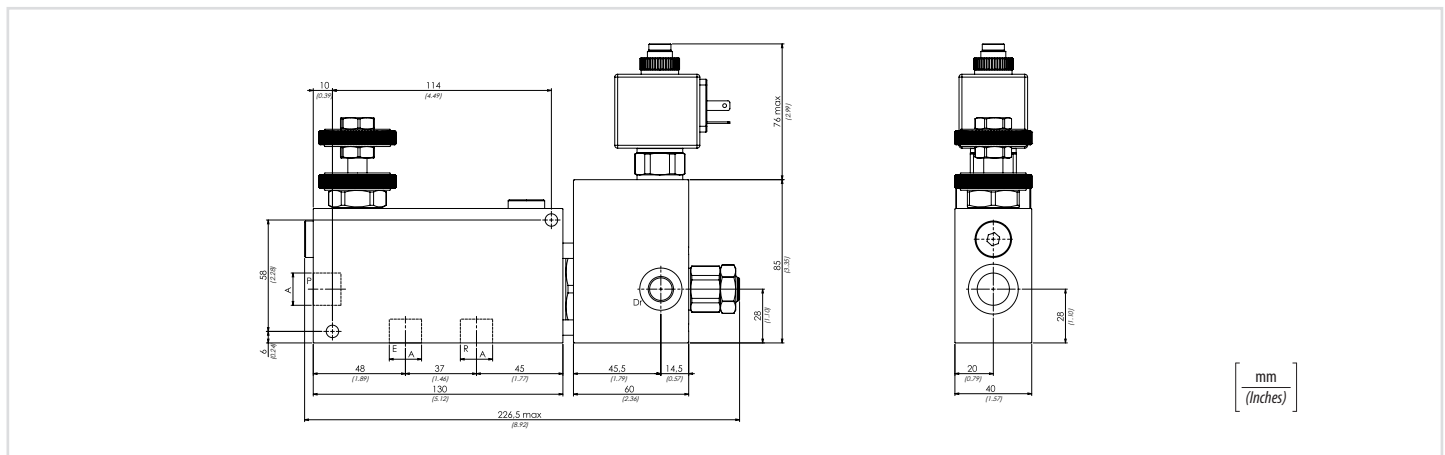
<b>01</b>	Regolatori di flusso 3 vie - compensati, con eccedenza in pressione, valvola di massima e valvola elettrica 3 ways flow control valves - pressure compensated, exceeding flow to pressure, relief valve and electrical valve	<b>VPP</b>	
<b>02</b>	Dimensione (Size)	BSPP 3/8 BSPP 1/2	
<b>03</b>	Regolazione (Setting)	Volantino (Hand wheel)	
<b>04</b>	Valvola di massima (Relief valve)	<b>RV</b>	
<b>05</b>	Valvola di massima (Relief Valve) V Max	Tappo (Plug)	<b>0</b>
		VMD1NC1 Molla (Spring) <b>10/40 bar</b> (145/580PSI)	<b>1</b>
		VMD1NC2 Molla (Spring) <b>20/110 bar</b> (290/1595 PSI)	<b>2</b>
		VMD1NC3 Molla (Spring) <b>30/210 bar</b> (435/3045 PSI)	<b>3</b>
		VMD1NC4 Molla (Spring) <b>40/350 bar</b> (580/5075 PSI)	<b>4</b>
<b>06</b>	Valvola elettrica (Electrical Valve) EV	Tappo (Plug)	<b>0</b>
		EVC7 (Normally closed)	<b>C</b>
		EVA7 (Normally open)	<b>A</b>
		EVE7 (Normally closed + Emergency)	<b>E</b>
<b>07</b>	Bobina (Coil) EV	Senza bobina (Without coil)	
		12 V (DC)	<b>12</b>
		24 V (DC)	<b>24</b>
		220 V (RAC)	<b>220</b>

### Schema idraulico - Hydraulic circuit



### Portata massima l/min - Max flow USgpm

50 l/min con 30 l/min in R (13,3 USgpm with 8 USgpm in R)	<b>380</b>
90 l/min con 50 l/min in R (24 USgpm with 13,3 USgpm in R)	<b>120</b>



### Caratteristiche tecniche - Technical characteristics

Tipo Type	A	Portata max (l/min) Max flow (USgpm)	Pressione max (bar) Max pressure (PSI)	Peso approssimativo senza valvole (kg) Approx weight without valves (lb)
<b>VPP380-RV</b>	<b>BSPP 3/8</b>	<b>50 (13.2)</b>	<b>250 (3625)</b>	<b>2,25 (4.97)</b>
<b>VPP120-RV</b>	<b>BSPP 1/2</b>	<b>90 (23.8)</b>		