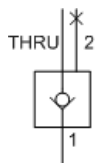


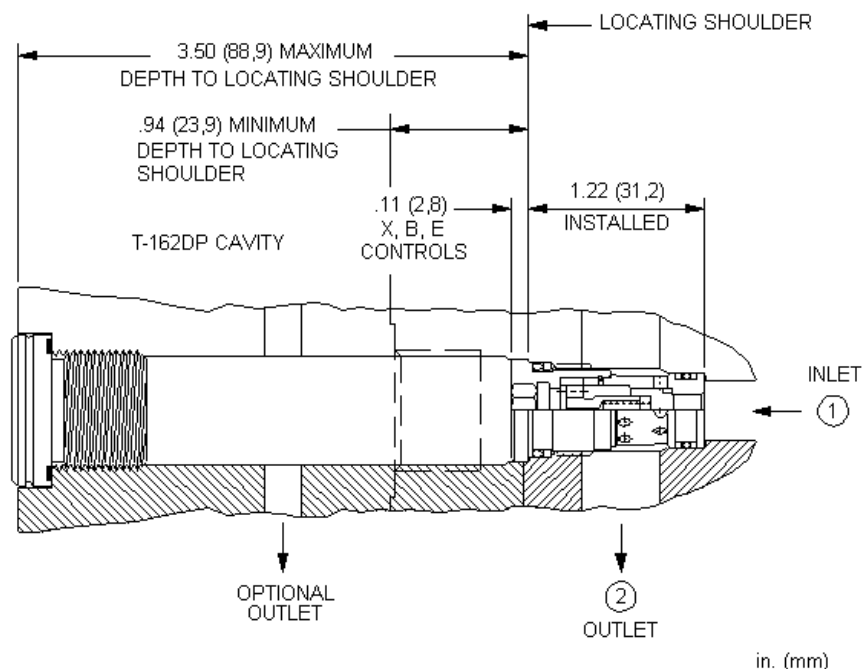
MODEL  
CXBM

Insert style, free flow nose to side check valve  
CAPACITY: 40 L/min. | CAVITY: T-162DP



#### CONFIGURATION

<b>X</b>	Control	Not Adjustable
<b>A</b>	Cracking Pressure	4 psi (0,3 bar)
<b>N</b>	Seal Material	Buna-N



Free-flow, nose-to-side check valves are on/off circuit components that allow free flow from the inlet (port 1) to the outlet (port 2) and block flow in the opposite direction.

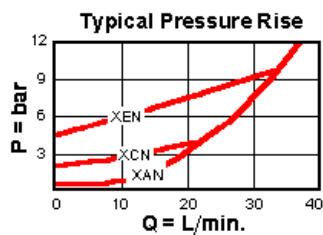
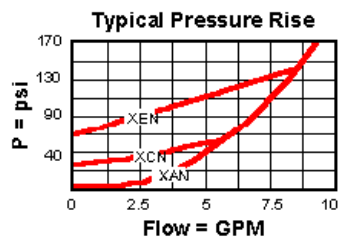
#### TECHNICAL DATA

Cavity	T-162DP
Series	0
Capacity	40 L/min.
Maximum Operating Pressure	350 bar
Maximum Valve Leakage at 110 SUS (24 cSt)	0,07 cc/min.
Valve Internal Hex Size	8 mm
Valve Installation Torque	27 - 34 Nm
Seal kit - Cartridge	Buna: 990-162-007
Seal kit - Cartridge	Polyurethane: 990-162-002
Seal kit - Cartridge	Viton: 990-162-006
Model Weight	0.03 kg.

#### TECHNICAL FEATURES

- This valve is what we call an Insert style. It is meant to be buried in a manifold or actuator. The cavity drawing for the T-162DP cavity contains a lot of detailed information and should be studied closely when applying this valve.
- Two-port check valves share the same cavity for a given frame size, however, pay close attention as flow paths may be in opposite directions.
- Check valves offer extremely low leakage rates with a maximum leakage of less than 1 drop per minute (0,07 cc/min).
- Will accept 5000 psi (350 bar) at ports 1 and 2.
- Incorporates the Sun floating style construction to minimize the possibility of internal parts binding due to excessive installation torque and/or cavity/cartridge machining variations.

#### PERFORMANCE CURVES



## CONFIGURATION OPTIONS

### CONTROL

Standard Options	X	Not Adjustable
------------------	---	----------------

### CRACKING PRESSURE

Standard Options	A	4 psi (0,3 bar)
	C	30 psi (2 bar)

### SEAL MATERIAL

Standard Options	N	Buna-N
	V	Viton

Copyright © 2002-2014 Sun Hydraulics Corporation. All rights reserved.