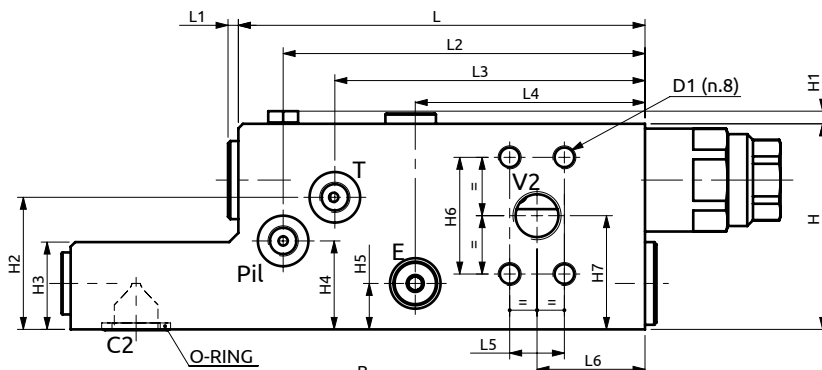
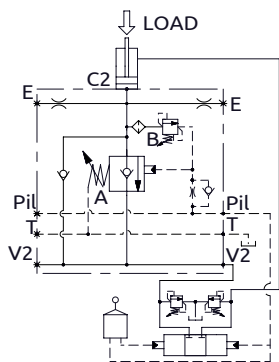


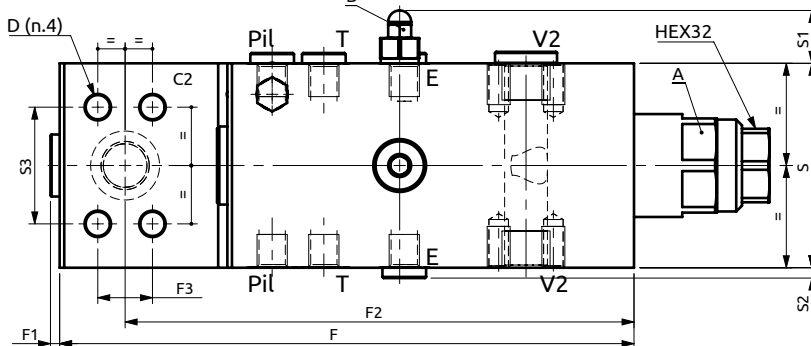
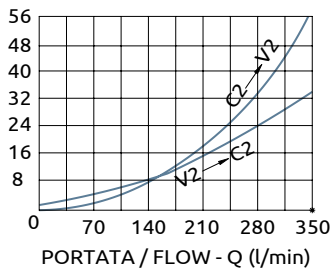


Valvola in linea per escavatori serie 275D
 Valve for earth moving machines "275D series"



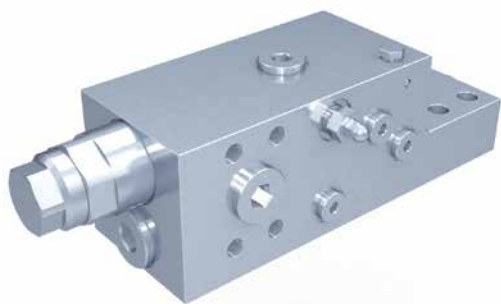
PRESSIONE / PRESSURE - Δp (bar)

CURVE CARATTERISTICHE
 PERFORMANCE CURVES



Corpo in acciaio / Steel body

| | | | | | | | | | | | | | | | | | | | | | | | | | |
|-----|-----|-------|-----|-----|------|----|----|----|-----|------|------|-----|------|----|------|----|------|------|-----|----|-------|------|-------|-----|----------------|
| 177 | 4.5 | 157.5 | 135 | 100 | 23.8 | 47 | 89 | 23 | 4.5 | 50.8 | 89.5 | 5.5 | 57.5 | 38 | 38.5 | 20 | 50.8 | 49.5 | 250 | 4 | 221.5 | 23.8 | Ø10.5 | M10 | OR Ø23.39x3.53 |
| L | L1 | L2 | L3 | L4 | L5 | L6 | S | S1 | S2 | S3 | H | H1 | H2 | H3 | H4 | H5 | H6 | H7 | F | F1 | F2 | F3 | D | D1 | O-RING |



DESCRIZIONE

DESCRIPTION

Collegare all'impianto come da schema. Il pilotaggio della valvola è prelevato dai manipolatori di comando distributore e la valvola permette: il flusso libero da V2 verso C2, il sostentamento del carico con distributore in neutro o pompa ferma, controllo della discesa a valvola pilotata e protezione contro sovrappressioni nel cilindro. L'attacco T deve essere collegato direttamente a scarico. L'attacco E è da collegare alla valvola sull'altro cilindroidi sollevamento, può servire come emergenza manuale per abbassare il carico.

To be connected as shown. The pilot signal is taken from the machine manipulators, the valve allows: free flow from V2 to C2, to hold the load with spool in neutral position or with the pump not running, controlled movement when pilot pressure is applied, relief function against overpressure in the cylinder. T port must be connected directly to the tank. Port E has to be connected to the valve of the second boom cylinder, can be used as manual lowering emergency.

| Codice Ordinazione | Campo di Taratura | | Taratura Standard | Incremento per Giro | Portata Massima | Pressione Max | Dimensione Porte | | Peso |
|--------------------|-------------------|-------------|-------------------|---------------------|-----------------|---------------|------------------|-------------|--------|
| Ordering Code | Pressure Range | | Standard Setting | Pressure Increase | Max Flow | Max Pressure | Port Size | | Weight |
| A068255.02.00 | A | 3-15 bar | 7.5 bar | 3.4 bar/turn | 350 l/min | 500 bar | V2, C2 | 3/4"SAE6000 | 12 kg |
| | B | 200-400 bar | 350 bar | 215 bar/turn | | | E, Pil, T | 1/4"G | |